

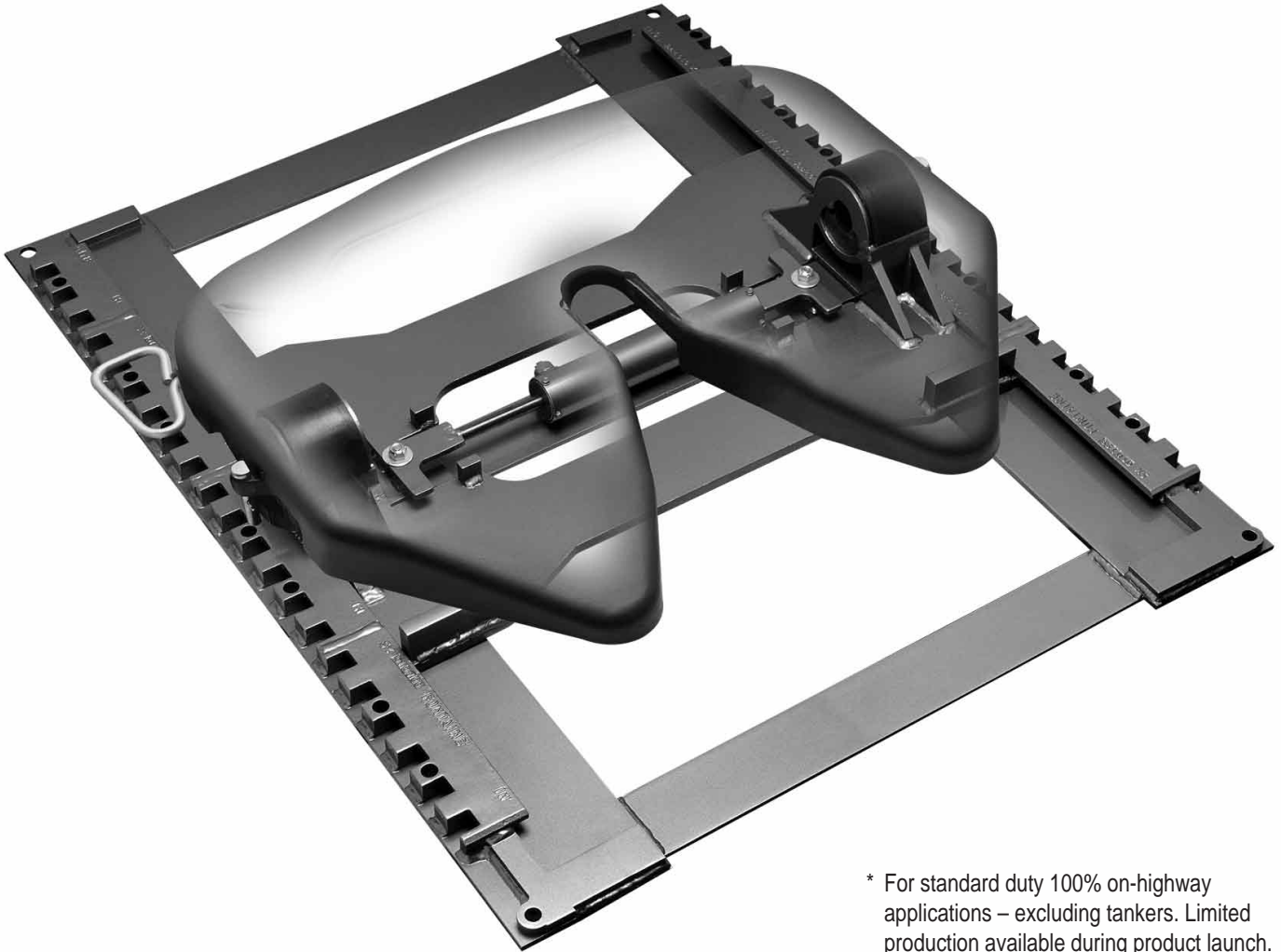
March 1, 2000

Light Weight Slide (LWS)

NEW

- Greater Payloads for Increased Freight Revenue
- About 50 lbs. Lighter With No Reduction in Capacity

Standard
Duty



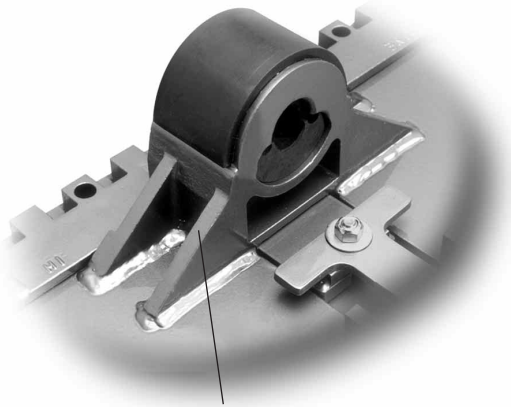
* For standard duty 100% on-highway applications – excluding tankers. Limited production available during product launch.

The Fontaine TechLock® System

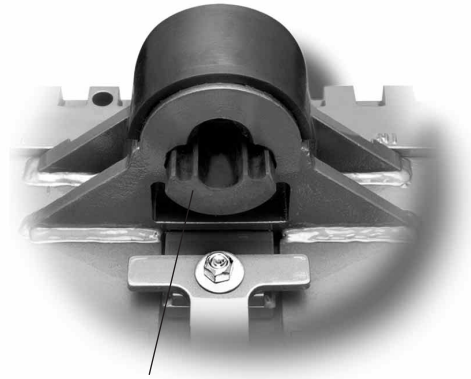
Superior Technology Delivers
Superior Locking Performance

Light Weight Slide (LWS)

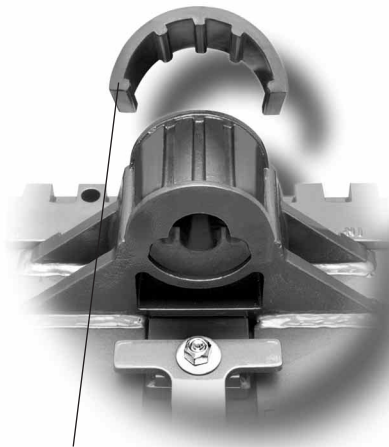
LWS Features:



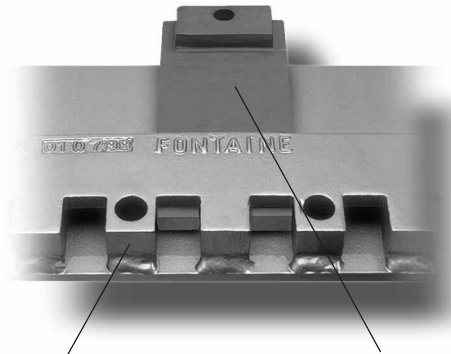
Reinforced cast bracket computer designed to provide lighter weight and greater durability



Dual-durometer two piece bushing gives you longer service life

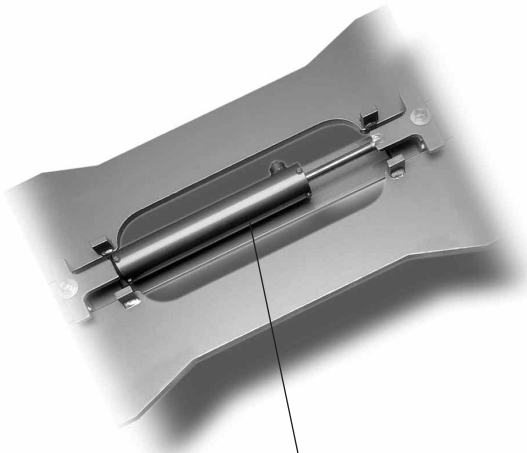


Greaseless bearing liner easily snaps into place. It's designed to reduce wear, eliminate the need for bearing grease and lower maintenance cost.

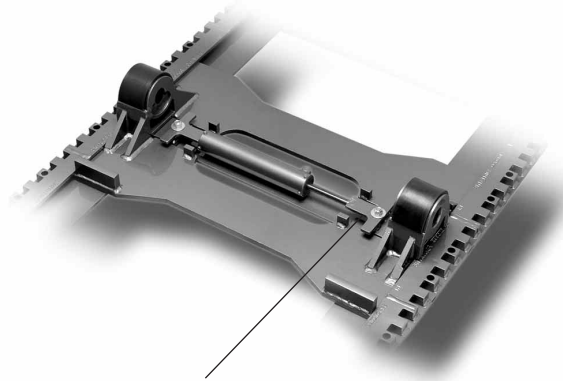


Slide Brackets are reinforced for greater durability. Two inch slide increments give you improved payload distribution.

Plus, the Quad-Lock four point locking system provides more locking surface and improved wear characteristics.



Special nitride coating on air cylinder and shaft offers superior corrosion resistance for longer service life.



Improved design uses fewer moving parts for greater durability and reduced maintenance.

Light Weight Air Slide Bracket and Rails – LWS*

ASYLWS724 (7-3/4" Height, 24" Slide Travel Shown)

**Standard
Duty**

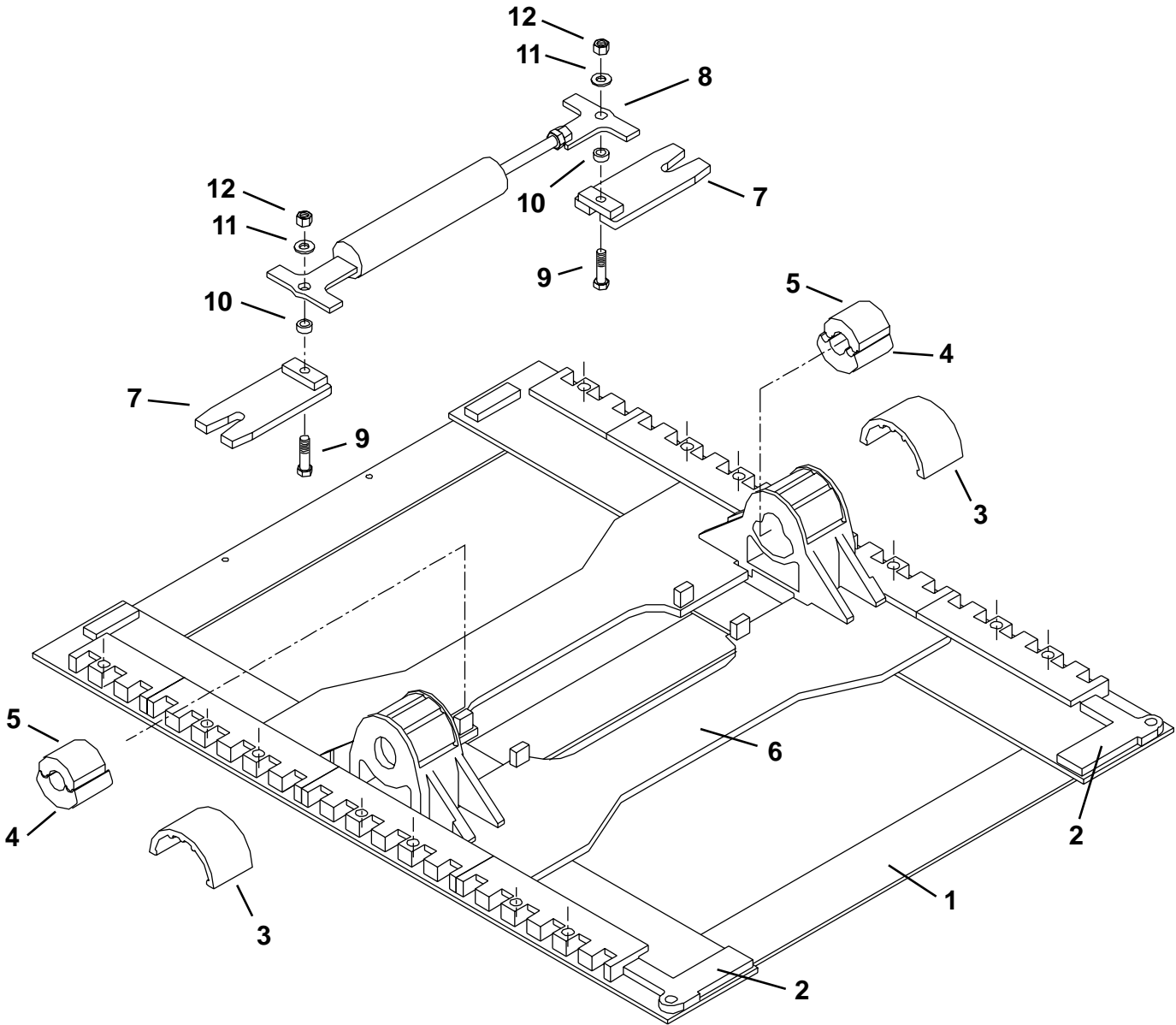


Illustration ASYLWS724

The Fontaine TechLock® System

Superior Technology Delivers
Superior Locking Performance

Light Weight Air Slide Bracket and Rails – LWS*

Item No.	Description	Part Number	Quantity
1	Slide Rail	See Slide Rail Chart	1
2	Rear Slide Stop	MSC-1515	2
3	Bracket Liner (pr.)	LNR-LWS	1
4	Lower Bracket Bushing (pr.)	BSH-LWS-L	1
5	Upper Bracket Bushing (pr.)	BSH-LWS-U	1
6	Slide Bracket	See Slide Bracket Chart	1
7	Locking Wedge Assy. (pr.) (includes hardware)	LOC-LWS	1
8	Air Cylinder Assy. (includes hardware)	CYL-LWS	1
9	Hex Head Bolt, 1/2" - 13 x 1-1/2", Grade "5"	BLT-302-13	2
10	Bushing, 7/16"	BSH-115	2
11	Flat Washer, 1/2" I.D., 1-3/8" O.D., Plain	WSH-304-4	2
12	Hex Lock Nut, 1/2" - 13, Grade "C"	NUT-303-9	2

Air Slide Brackets – LWS	
Part No.	Mounted Height
BKT6LWS	6-3/4"
BKT7LWS	7-3/4"
BKT8LWS	8-3/4"

NOTE: Slide Brackets include item numbers 3 thru 12.

Slide Rails – LWS		
Part No.	Slide Travel	Length
SLR12LWS	12"	37-1/4"
SLR24LWS	24"	49-1/4"
SLR36LWS	36"	61-1/4"

NOTE: Slide Rails include item numbers 1 and 2.

* For standard duty 100% on-highway applications – excluding tankers. Limited production available during product launch.

Bolt Kits

Description	Quantity
KIT-SLD-1412 (12" Slide Bolt Kit)	
BLT-302-25	2
BLT-302-27	12
NUT-303-3	14
WSH-304-7	28
KIT-SLD-1824 (24" Slide Bolt Kit)	
BLT-302-25	2
BLT-302-27	16
NUT-303-3	18
WSH-304-7	36

Description	Quantity
KIT-SLD-2236 (36" Slide Bolt Kit)	
BLT-302-25	2
BLT-302-27	20
NUT-303-3	22
WSH-304-7	44