

No-Slack® II 6000 Series Top Plate

SLTPL6000 (Left Side Release Shown)

Standard
Duty

SRTPL6000 (Right Side Release)

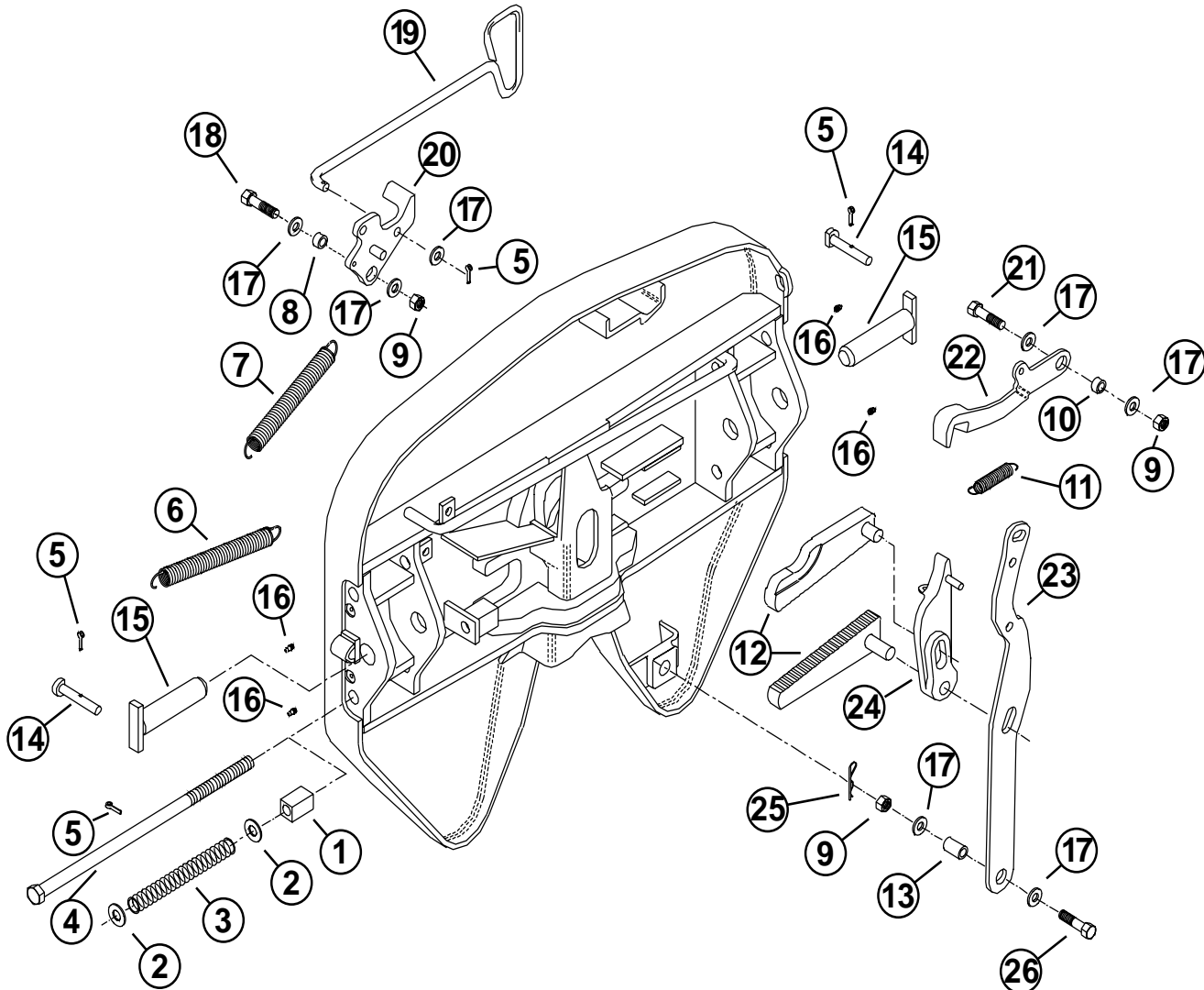


Illustration SLTPL6000

The Fontaine TechLock® System

Superior Technology Delivers
Superior Locking Performance

No-Slack® II 6000 Series Top Plate

Item No.	Description	Part Number	Quantity
①	Wedge Stop Rod Nut	NUT-319	1
②	Flat Washer, 5/8", Plain	WSH-304-5	2
③	Wedge Stop Rod Spring	SPR-317	1
④	Wedge Stop Rod **	ROD-1108	1
⑤	Cotter Pin, 3/16" x 1"	PIN-165	4
⑥	Bumper Spring	SPR-128	1
⑦	Handle Spring	SPR-338	1
⑧	Bushing, 7/16"	BSH-115	1
⑨	Hex Lock Nut, 1/2" - 13, Grade "C"	NUT-303-9	3
⑩	Bushing, 5/16"	BSH-629	1
⑪	Timer Spring	CD-SPR-236	1
⑫	Step Jaw and Wedge Set	WED-6000*	1
⑬	Bushing	BSH-1225	1
⑭	Bracket Retainer Pin	PIN-124	2
⑮	Bracket Pin	PIN-6000	2
⑯	Grease Fitting	MSC-375	4
⑰	Flat Washer, 1/2" I.D. 1-3/8" O.D., Plain	WSH-304-4	7
⑱	Hex Head Bolt, 1/2" - 13 x 1-1/2", Grade 5	BLT-302-13	1
⑲	Pull Handle	PUL-6000*	1
⑳	Secondary Lock	LAT-6000*	1
㉑	Hex Head Bolt, 1/2" - 13 x 1-3/4", Grade 5	BLT-302-144	1
㉒	Bumper	BPR-6000*	1
㉓	Operating Handle	OPR-6000	1
㉔	Timer	TMR-6000*	1
㉕	Hair Pin Cotter	PIN-336-1	1
㉖	Hex Head Bolt, 1/2" - 13 x 2-1/4", Grade 5	BLT-302-67	1

Item No.	Description	Quantity
KIT-BPR-6000*		
6000 Series Bumper Kit		
6	Bumper Spring	1
9	Hex Lock Nut, 1/2" - 13	1
10	Bushing	1
17	Flat Washer, 1/2" I.D.	2
21	Hex Head Bolt, 1/2" - 13	1
22	Bumper	1
KIT-LAT-6000*		
6000 Series Secondary Lock Kit		
5	Cotter Pin, 3/16" x 1"	1
7	Handle Spring	1
8	Bushing, 7/16"	1
9	Hex Lock Nut, 1/2" - 13	1
17	Flat Washer, 1/2" I.D.	2
18	Hex Head Bolt, 1/2" - 13	1
20	Secondary Lock	1
KIT-OPR-6000		
6000 Series Operating Handle Kit		
8	Bushing, 7/16"	1
9	Lock Nut, 1/2" - 13	3
10	Bushing, 5/16"	1
13	Bushing	1
17	Flat Washer, 1/2" I.D.	2
23	Operating Handle	1
25	Hair Pin Cotter	1
26	Hex Head Bolt, 1/2" - 13	1
KIT-PIN-6000		
6000 Series Pin and Bushing Kit		
5	Cotter Pin, 3/16" x 1"	2
14	Bracket Retainer Pin	2
15	Bracket Pin	2
Not Pictured	Bracket Bushing (pr.)	1
KIT-PUL-6000*		
6000 Series Pull Handle Kit		
5	Cotter Pin, 3/16" x 1"	1
17	Flat Washer, 1/2" I.D.	1
19	Pull Handle	1
KIT-ROD-1108		
Wedge Stop Rod Kit		
1	Wedge Stop Rod Nut	1
2	Flat Washer, 5/8"	2
3	Wedge Stop Rod Spring	1
4	Wedge Stop Rod	1
5	Cotter Pin, 3/16" x 1"	1

* Specify left side (driver's side) or right side (curb side) release by adding an "L" or "R" after Part # (Example: KIT-RPR-6000L).

** Some custom ordered No-Slack® II 6000 Series Top Plate models use a knock out rod with no hex head or threads instead of a wedge stop rod as shown at left – see ④

Item No.	Description	Quantity
KIT-TMR-6000*		
6000 Series Timer Kit		
9	Hex Lock Nut, 1/2" - 13	1
11	Timer Spring	1
24	Timer	1
25	Hair Pin Cotter	1

Item No.	Description	Quantity
KIT-RPR-6000*		
No-Slack II Repair Kit		
6	Bumper Spring	1
7	Handle Spring	1
8	Bushing, 7/16"	1
9	Hex Lock Nut, 1/2" - 13	3
10	Bushing, 5/16"	1
11	Timer Spring	1
12	Step Jaw and Wedge Set	1



No-Slack® II 6000 Series Top Plate Air Actuated

AATPL6000 (Left Side Release Shown)

**Standard
Duty**

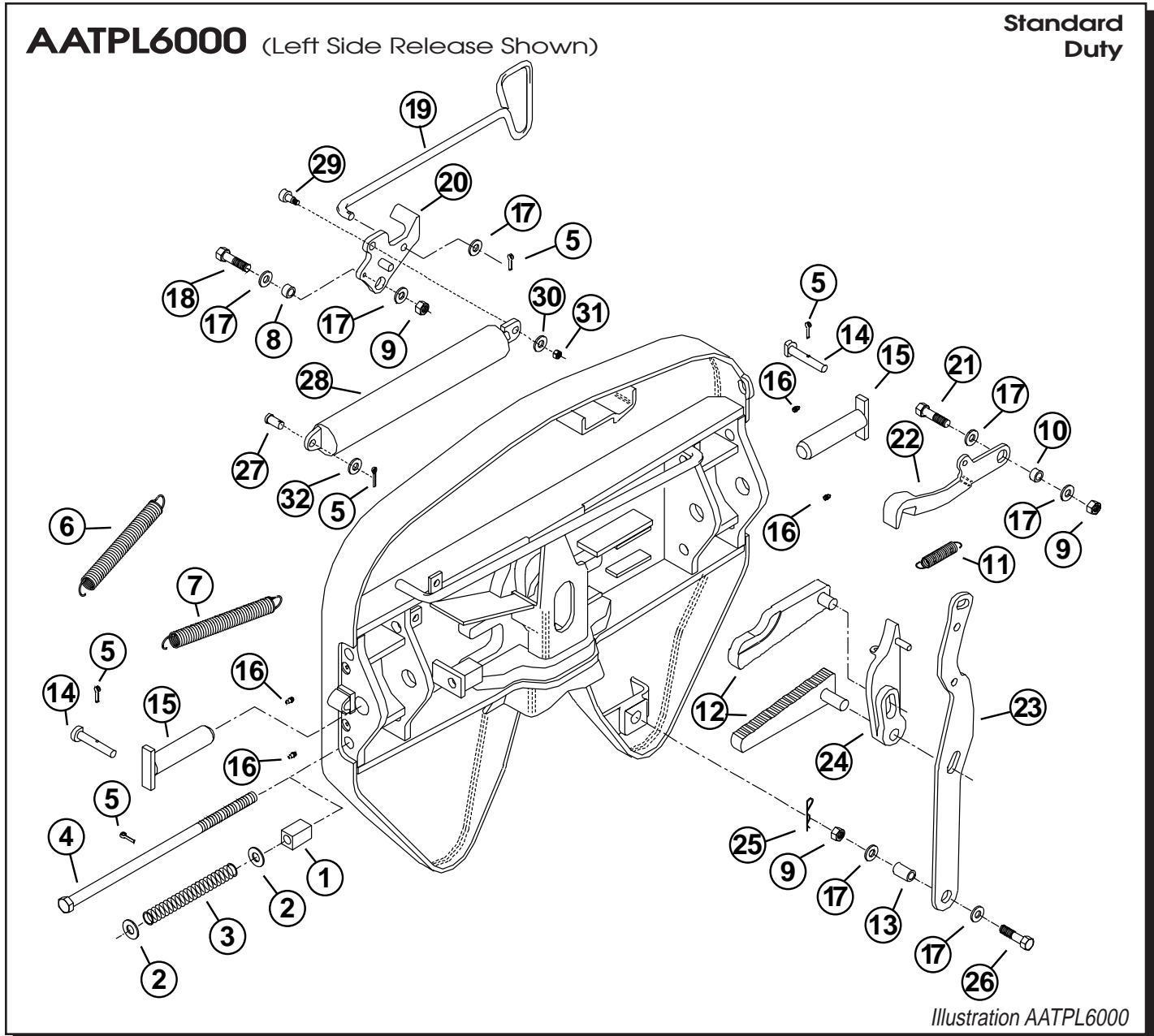


Illustration AATPL6000

The Fontaine TechLock® System

Superior Technology Delivers
Superior Locking Performance

No-Slack® II 6000 Series Top Plate Air Actuated

Item No.	Description	Part Number	Quantity
①	Wedge Stop Rod Nut	NUT-319	1
②	Flat Washer, 5/8", Plain	WSH-304-5	2
③	Wedge Stop Rod Spring	SPR-317	1
④	Wedge Stop Rod **	ROD-1108	1
⑤	Cotter Pin, 3/16" x 1"	PIN-165	5
⑥	Bumper Spring (Same Part # as Handle Spring)	SPR-374	1
⑦	Handle Spring	SPR-374	1
⑧	Bushing, 7/16"	BSH-115	1
⑨	Hex Lock Nut, 1/2" - 13, Grade "C"	NUT-303-9	3
⑩	Bushing, 5/16"	BSH-629	1
⑪	Timer Spring	CD-SPR-236	1
⑫	Step Jaw and Wedge Set	WED-6000*	1
⑬	Bushing	BSH-1225	1
⑭	Bracket Retainer Pin	PIN-124	2
⑮	Bracket Pin	PIN-6000	2
⑯	Grease Fitting	MSC-375	4
⑰	Flat Washer, 1/2" I.D. 1-3/8" O.D., Plain	WSH-304-4	7
⑱	Head Bolt, 1/2" - 13 x 1-1/2", Grade 5	BLT-302-13	1
⑲	Pull Handle	PUL-6000*	1
⑳	Secondary Lock	LAT-6000*	1
㉑	Hex Head Bolt, 1/2" - 13 x 1-3/4", Grade 5	BLT-302-144	1
㉒	Bumper	BPR-6000*	1
㉓	Operating Handle	OPR-6000	1
㉔	Timer	TMR-6000*	1
㉕	Hair Pin Cotter	PIN-336-1	1
㉖	Hex Head Bolt, 1/2" - 13 x 2-1/4", Grade 5	BLT-302-67	1
㉗	Clevis Pin, 1/2" x 1"	PIN-307-4	1
㉘	Air Cylinder	CYL-AA-6000*	1
㉙	Shoulder Bolt, 1/2"x1-3/8" w/ 3/8"-16, Grade 5	BLT-313-2	1
㉚	Flat Washer, 3/8", Plain	WSH-304-1	1
㉛	Hex Lock Nut, 3/8" -16, Grade "B"	NUT-303-1	1
㉜	Flat Washer, 1/2" I.D. 1" O.D., Plain	WSH-304-3	1

* Specify left side (driver's side) or right side (curb side) release by adding an "L" or "R" after Part # (Example: KIT-AA-6000L).

** Some custom ordered No-Slack® II 6000 Series Top Plate models use a knock out rod with no hex head or threads instead of a wedge stop rod as shown at left – see ④

Item No.	Description	Quantity
KIT-AA-6000*		
Air Actuated Conversion Kit		
5	Cotter Pin, 3/16" x 1	1
6	Bumper Spring	1
27	Clevis Pin, 1/2" x 1"	1
28	Air Cylinder	1
29	Shoulder Bolt	1
30	Flat Washer	1
31	Hex Lock Nut, 3/8" -16	1
32	Flat Washer, 1/2" I.D. 1" O.D.	1
KIT-BPR-6000*		
6000 Series Bumper Kit		
6	Bumper Spring	1
9	Hex Lock Nut, 1/2" - 13	1
10	Bushing	1
17	Flat Washer, 1/2" I.D.	2
21	Hex Head Bolt, 1/2" - 13	1
22	Bumper	1
KIT-OPR-6000		
6000 Series Operating Handle Kit		
8	Bushing, 7/16"	1
9	Lock Nut, 1/2" - 13	3
10	Bushing, 5/16"	1
13	Bushing	1
17	Flat Washer, 1/2" I.D.	2
23	Operating Handle	1
25	Hair Pin Cotter	1
26	Hex Head Bolt, 1/2"	1
KIT-PIN-6000		
6000 Series Pin and Bushing Kit		
5	Cotter Pin, 3/16" x 1"	2
14	Bracket Retainer Pin	2
15	Bracket Pin	2
Not Pictured	Bracket Bushing (pr.)	1
KIT-PUL-6000*		
6000 Series Pull Handle Kit		
5	Cotter Pin, 3/16" x 1"	1
17	Flat Washer, 1/2" I.D.	1
19	Pull Handle	1

Item No.	Description	Quantity
KIT-TMR-6000*		
6000 Series Timer Kit		
9	Hex Lock Nut, 1/2" - 13	1
11	Timer Spring	1
24	Timer	1
25	Hair Pin Cotter	1

Item No.	Description	Quantity
KIT-ROD-1108		
Wedge Stop Rod Kit		
1	Wedge Stop Rod Nut	1
2	Flat Washer, 5/8"	2
3	Wedge Stop Rod Spring	1
4	Wedge Stop Rod	1
5	Cotter Pin, 3/16" x 1"	1

