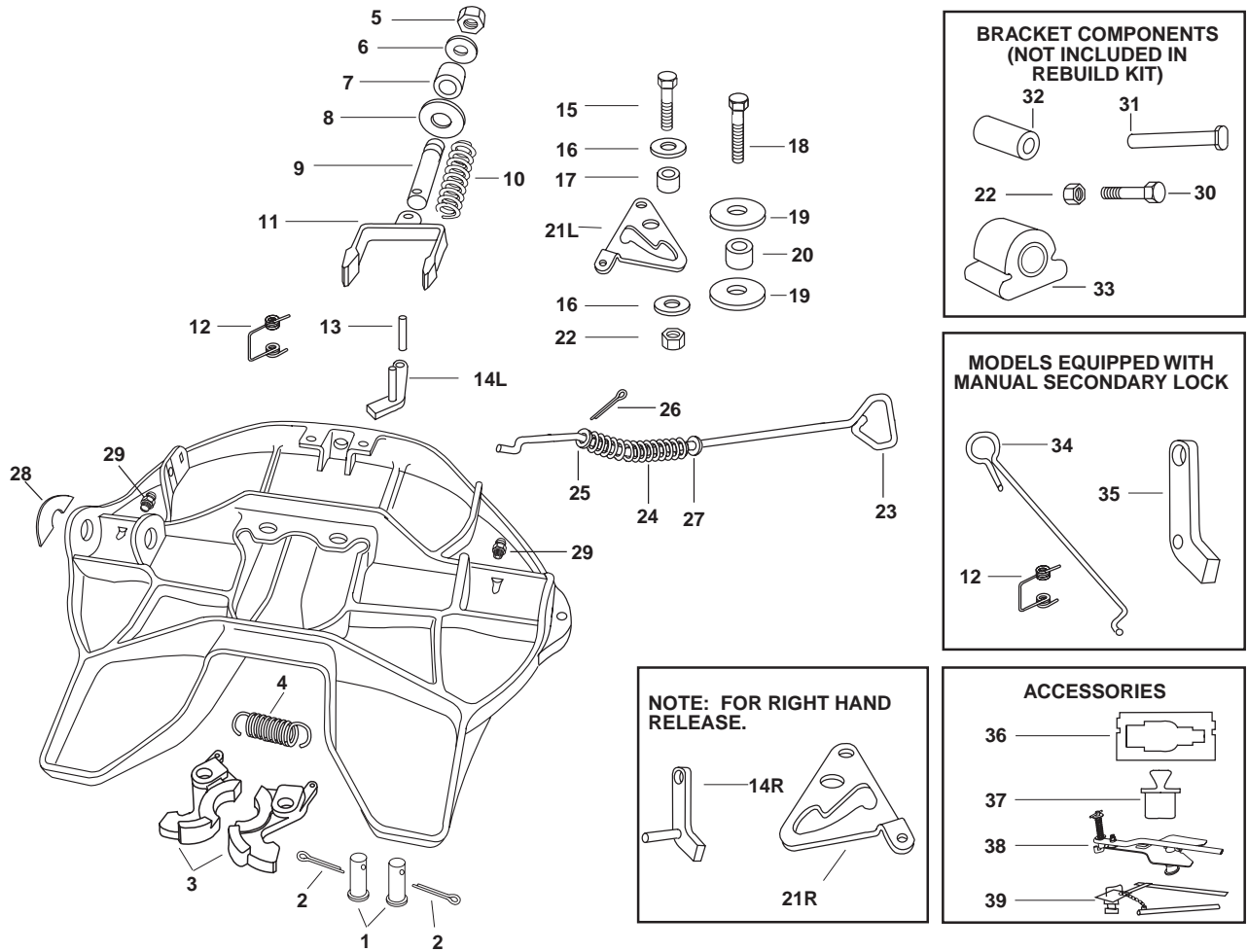




Exploded View

XA-351 SERIES Fifth Wheel Top Plates



ITEM NO.	PART NO.	NO. REQ.	PART NAME	ITEM NO.	PART NO.	NO. REQ.	PART NAME
1	XA-07292-T	2	Lock Pin	21L	XA-07150-L	1	Cam plate (left-hand)
2	XB-5	2	Cotter pin (1/4" x 2")	21R	XA-07150-R	1	Cam plate (right-hand)
3	XA-07296	1	Lock jaw set	22	XB-T-69-A	1	Locknut (1/2"-20) (2 add'l. req'd. for brackets)
4	XB-07628	1	Extension spring	23	XA-07151-1	1	Release handle (universal for both left and right)
5	XB-HNH-34-F	1	Locknut (3/4"-16)	24	XB-07291	1	Compression spring
6	XB-PW-1316-112	1	Washer (1-1/2" O.D. x 13/16" I.D.)	25	XB-PW-1732-1-116	1	Washer (1-1/16" O.D. x 5/8" I.D.)
7	XB-1127	1	Rubber washer	26	XB-07508	1	Cotter pin (1/8" x 1-1/4")
8	XB-02312	1	Lock adjustment tag	27	XB-T-49	1	Washer (1-3/8" O.D. x 9/16" I.D.)
9	XA-1706	1	Yoke shaft	28	XB-07610	1	Operation tag
10	XB-1505	1	Compression spring	*** 29	XB-H-38	2	Grease zerk
11	XA-07295	1	Yoke	* 30	XB-C-95	2	Hex head cap screw (1/2"-20 x 1-1/4")
12	XB-2149	1	Torsion spring	* 31	XE-06356	2	Bracket pin
13	XB-21-S-500-2750	1	Roll pin (1/2" x 2-3/4")	* 32	XB-1604-5	2	Rubber bushing (brackets mfg'd prior to 5/82)
14L	XA-3542-L	1	Secondary lock (left-hand)	* 33	XB-0011-2	2	Rubber bushing (brackets mfg'd after 5/82)
14R	XA-3542-R	1	Secondary lock (right-hand)	** 34	XA-3542-M	1	Manual secondary lock release handle
15	XB-2083	1	Hex head cap screw (1/2"-20 x 1-3/4")	** 35	XA-3528	1	Manual secondary lock
16	XB-08559	2	Washer (1-3/4" O.D. x 9/16" I.D.)	* 36	TF-0110	1	Kingpin gage
17	XA-1029	1	Roller (1/2" I.D.)	* 37	TF-0237	1	2" Lock gage (plug)
18	XB-CX-58-F-134	1	Hex head cap screw (5/8"-18 x 1-3/4")	* 38	TF-TLN-5001	1	Kingpin lock tester (New)
19	XB-07431	2	Washer (2-5/8" x 21/32")	* 39	TF-TLN-1000	1	Kingpin lock tester (Old)
20	XA-1507	1	Roller (5/8" I.D.)				

* Parts not included in rebuild kit (available from your local Holland distributor.)

** Parts included in rebuild kits RK-351-A-L-02 and RK-351-A-02.

*** Parts not present on XA-331 Series Low Lube Top Plates