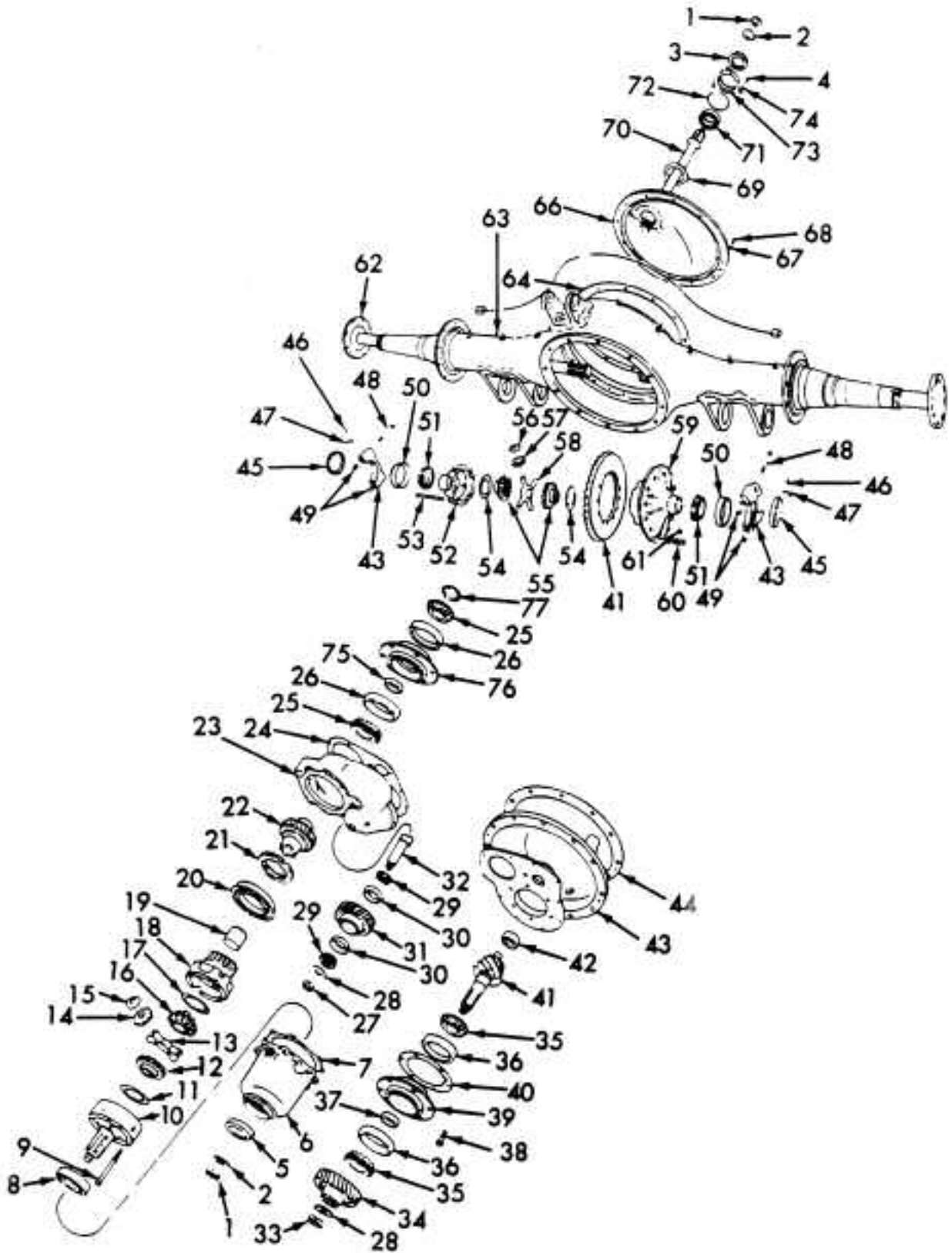


# INTERNATIONAL<sup>®</sup>

## RA351 FRONT - REAR AXLE



PARTS LISTED IN THIS CATALOG ARE NOT NECESSARILY MANUFACTURED BY THE ORIGINAL EQUIPMENT MANUFACTURER AND ANY REFERENCE TO THE TRADEMARKS OR PART NUMBERS OF OTHERS ARE FOR CROSS REFERENCE INFORMATIONAL PURPOSES ONLY. THE TRADEMARKS OF OTHERS REFERRED TO HEREIN ARE OWNED BY THEIR RESPECTIVE COMPANIES AND ARE NOT AFFILIATED IN ANY WAY WITH MIDWEST TRUCK & AUTO PARTS, INC.<sup>®</sup> MOTIVE GEAR<sup>®</sup> AND WORLD AMERICAN<sup>®</sup> ARE THE REGISTERED TRADEMARKS OF MIDWEST TRUCK & AUTO PARTS, INC.<sup>®</sup> USE OF THE ® IN CONNECTION WITH A MARK OF MIDWEST TRUCK & AUTO PARTS, INC.<sup>®</sup> INDICATES THAT THE MARK IS REGISTERED IN AT LEAST THE UNITED STATES. NO REPRESENTATION IS MADE WITH RESPECT TO THE SOURCE OF MANUFACTURE OF ANY PARTICULAR PART. © 2005, MIDWEST TRUCK & AUTO PARTS, INC.<sup>®</sup> ALL RIGHTS RESERVED.

# INTERNATIONAL<sup>®</sup>

## RA351 FRONT - REAR AXLE

ITEM NO.	PART NO.	DESCRIPTION	QTY
AXLE, FWD REAR INTL/DANA <sup>®</sup> G340S 34000 LB. SGL-RED			
1	26244R1	@ NUT, COMPANION FLG	2
2	214757R2	@ WASHER, COMPANION FLG NUT	2
3	415013N	/ SEAL, OUTPUT SHAFT OIL	1
4	26310R1	BOLT, RET TO COVER	4
5	415147N	/ SEAL, INTER DIFF. HSG OIL	1
6	474015C1	@ HOUSING INTER DIFF.	1
	583164C1	@ SCREW, 12 PT HSG TO CASE	8
	586045C1	@ PLUG, PIPE SQ SOCKET 3/8	2
7	474517C2	GASKET, ELIMINATOR 50CC TUBE	1
8	310B	/@ BEARING, INTER DIFF. FRT FOR SERVICE ORDER FP6310VSP69 @ SHIM, INPUT BRG	1
	227331R1	.005 IN. THK	AR
	227332R1	.010 IN. THK	AR
9	227327R1	@ BOLT, INTER DIFF. SPIDER FWD HALF	8
10		@ CASE, INTER DIFF. SPIDER FWD HALF	
11	612686R1	@ WASHER, FRT SIDE GEAR THRUST	1
	463346C1	BEARING, FRT SIDE GEAR THRUST	1
12	417854C1	▲ @ GEAR INTER DIFF. FRT SIDE	1
13	436830C1	▲ @ SPIDER, INTER DIFF.	1
14	436831C1	▲ @ GEAR, INTER DIFF. PINION	4
15	88015H	▲ @ WASHER, PINION THRUST	4
16	441143C1	▲ @ GEAR, INTER DIFF. REAR SIDE	1
17	227279R1	▲ @ WASHER, REAR SIDE GEAR THRUST	1
18		@ CASE, W/BUSH. INTER DIFF. REAR HALF	
19	243496R1	@ BUSHING, INTER DIFF. CASE	1
20	122SL	/@ BEARING, INPUT SHAFT REAR	1
21	227283R3	RING, DIFF. CLUTCH	1
22	487526C1	GEAR, INPUT DR	1
23	474018C1	CASE, INTER DIFF. CARRIER	1
	583164C1	SCREW, FLG 12 PT 1/2 X 1-1/4 IN.	11
	20126R1	PIN, SHIFT FORK	1
	17158R1	PIN, SLT	1
	586049C1	PLUG, PIPE SQ-SOCKET 3/4 IN. DRAIN	1
24		GASKET, SILICONE 3 OZ. TUBE	1
25	L610549	/ BEARING, CONE INPUT GEAR REAR	2
26	L610510	/ BEARING, CUP INPUT GEAR REAR	2
27	19392R1	NUT, IDLER SHFT STOP 1-1/8NF	1
28		WASHER	
	227271R1	IDLER SHFT	1
	214757R2	DR PINION THRUST	1
29	25877	/ BEARING, CONE IDLER GEAR	2
30	25821	/ BEARING, CUP IDLER GEAR	2

ITEM NO.	PART NO.	DESCRIPTION	QTY
31	487524C91	GEAR, W/CUP, IDLER SPACER, IDLER GEAR BRG	1
	227420R2	.395 IN. THK	AR
	329579C2	.975 IN. THK	AR
	329580C2	.980 IN. THK	AR
	227415R2	.985 IN. THK	AR
	329581C2	.990 IN. THK	AR
	227416R2	.995 IN. THK	AR
	227417R2	1.000 IN. THK	AR
	227418R2	1.005 IN. THK	AR
	227419R2	1.010 IN. THK	AR
	227414R2	1.015 IN. THK	AR
32	227351R1	SHAFT, IDLER GEAR	1
33	83799	NUT, DR PINION	1
	19415R1	PIN, ROLL	1
34	487536C1	GEAR, PINION SHFT DR	1
35	72225C	/ BEARING, CONE PINION	2
36	72487	/ BEARING, CUP PINION	2
37		SPACER, PINION BRG	
	360453C1	.718 IN. THK	AR
	360457C1	.722 IN. THK	AR
	360461C1	.726 IN. THK	AR
	360465C1	.730 IN. THK	AR
	360469C1	.734 IN. THK	AR
	393975C1	.738 IN. THK	AR
	393979C1	.742 IN. THK	AR
38	1691152C1	BOLT, PINION BRG CAGE	6
39	359358C11	CAGE, W/CUPS BRG	1
40		SHIM, PINION BRG CAGE	
	255751C1	.003 IN. THK	AR
	255751C1	.005 IN. THK	AR
	227354R1	.010 IN. THK	AR
	227354R1	.030 IN. THK	AR
41		// GEAR SET, RING AND PINION	
	597237C91	3.73-1 RATIO	1
	597238C91	3.91-1 RATIO	1
	597239C91	4.10-1 RATIO	1
	597240C91	4.44-1 RATIO	1
	597241C91	4.78-1 RATIO	1
	597242C91	5.37-1 RATIO	1
	597243C91	6.14-1 RATIO	1
	597244C91	6.57-1 RATIO	1
	597245C91	7.17-1 RATIO	1
	597246C91	8.17-1 RATIO	1
42	MU1307TM	/ BEARING, PINION PILOT ROLLER	1
43	474020C92	CARRIER, W/CAPS DIFF.	1
	1691150C1	BOLT, CARR TO HSG	12
	181701	BOLT, HEX-HD 1/2NF X 1-5/8 IN.	2
	124934	NUT, HEX JAM 1/2NF	2
	5/8 R	WASHER, FL 5/8 IN.	12
44	161026R3	GASKET, ELIMINATOR 50CC TUBE	1
45	69208R1	ADJUSTER, DIFF. BRG	2
46	3/16 X 1 P	PIN, COTTER 3/16 X 1 IN.	2
47	157491R2	LOCK, DIFF. BRG ADJ	2
48	24895R1	BOLT, DIFF. BRG CAP	4
	25712R1	WASHER, DIFF. BRG CAP BOLT	4
49		NOT USED	
50	47820	/ BEARING, CUP DIFF.	2
51	47890	/ BEARING, CONE DIFF.	2

PARTS LISTED IN THIS CATALOG ARE NOT NECESSARILY MANUFACTURED BY THE ORIGINAL EQUIPMENT MANUFACTURER AND ANY REFERENCE TO THE TRADEMARKS OR PART NUMBERS OF OTHERS ARE FOR CROSS REFERENCE INFORMATIONAL PURPOSES ONLY. THE TRADEMARKS OF OTHERS REFERRED TO HEREIN ARE OWNED BY THEIR RESPECTIVE COMPANIES AND ARE NOT AFFILIATED IN ANY WAY WITH MIDWEST TRUCK & AUTO PARTS, INC.<sup>®</sup> MOTIVE GEAR<sup>®</sup> AND WORLD AMERICAN<sup>®</sup> ARE THE REGISTERED TRADEMARKS OF MIDWEST TRUCK & AUTO PARTS, INC.<sup>®</sup> USE OF THE <sup>®</sup> IN CONNECTION WITH A MARK OF MIDWEST TRUCK & AUTO PARTS, INC.<sup>®</sup> INDICATES THAT THE MARK IS REGISTERED IN AT LEAST THE UNITED STATES. NO REPRESENTATION IS MADE WITH RESPECT TO THE SOURCE OF MANUFACTURE OF ANY PARTICULAR PART. © 2005, MIDWEST TRUCK & AUTO PARTS, INC.<sup>®</sup> ALL RIGHTS RESERVED.

# INTERNATIONAL®

## RA351 FRONT - REAR AXLE

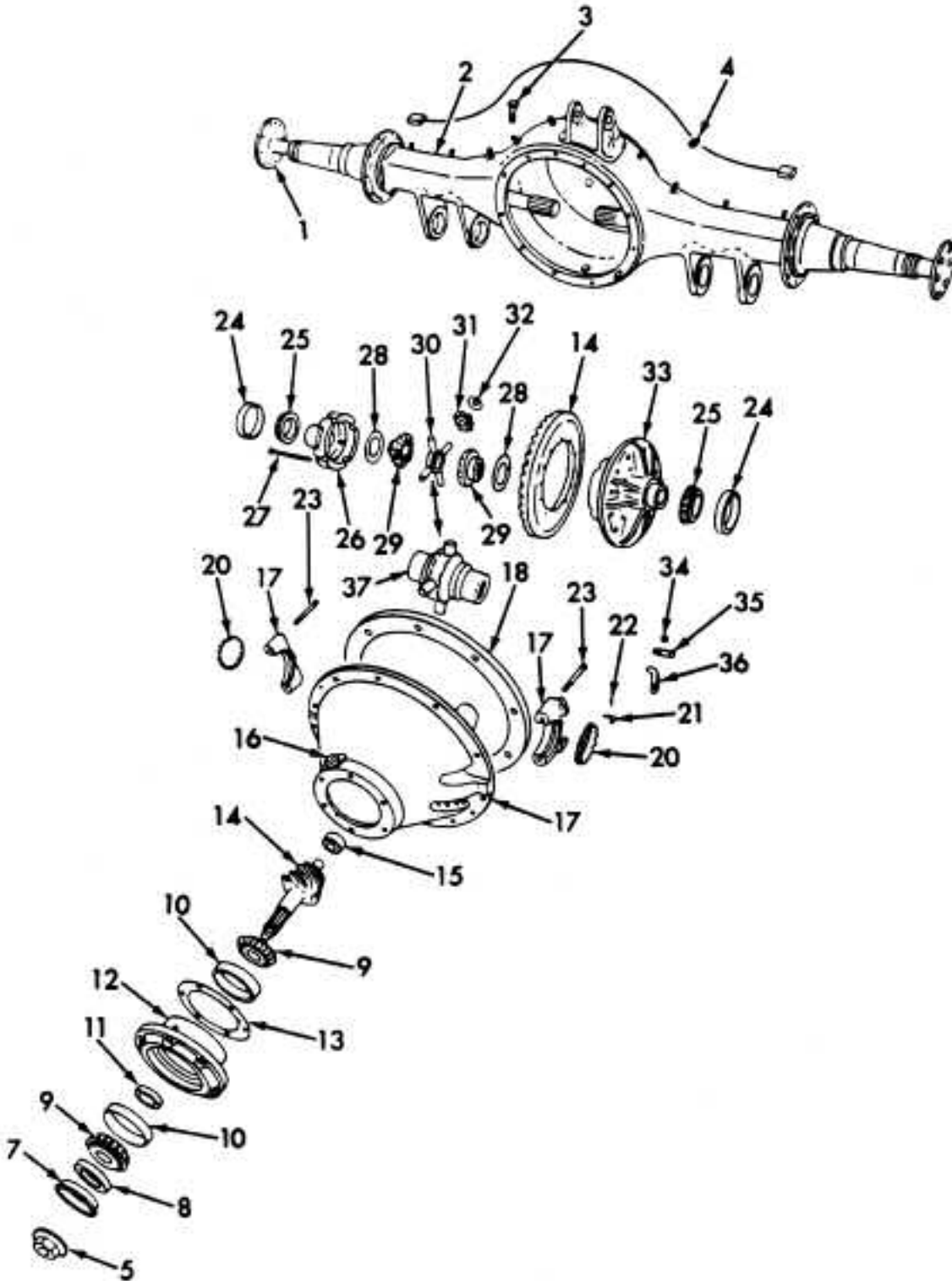
ITEM NO.	PART NO.	DESCRIPTION	QTY
52	864358R2	# CASE, DIFF. PL HALF	1
53		# BOLT, DIFF. CASE	
	1691256C1	3.73 THRU 4.44-1 RATIO	8
	1691255C1	4.78 THRU 8.17-1 RATIO	8
54	157494R1	&D WASHER, DIFF. SIDE GEAR THRUST	2
55	161027R2	&D GEAR, DIFF. SIDE - 16 SPL.	2
	571357C1	39 SPL.	
56	864360R1	&D WASHER, DIFF. PINION THRUST	4
57	864357R2	&D GEAR, DIFF. PINION	4
58	864356R2	&D SPIDER, DIFF.	1
59		# CASE, DIFF. FLG HALF	1
	505756C1	3.73 THRU 4.44-1 RATIO	1
	505757C1	4.78 THRU 8.17-1 RATIO	1
60	157490R1	⊙ RIVET, RING GEAR TO DIFF. CASE	12
61	27293R1	# NUT, DIFF. CASE BOLT	8
62	109389R1	SHAFT, AXLE 2 IN.	1
		X 16 SPLINES	
		PRE-AUTOMATED AXLE SHAFT	
	2502179C1	39 SPLINES	1
		AUTOMATED AXLE SHAFT	
		STUD, WHEEL FLG	16
	144423H	NUT, HEX LK 5/8NF	16
	895478R2	GASKET, AXLE SHAFT FLG	2
63		HOUSING AXLE	
	595573C1	HEND® SUSP	1
		INTL SUSP	
	595574C1	4-SPG AND REYCO®	1
	595575C1	AIR	1
		PLUG	
	586049C1	MAGNETIC DRAIN	1
	586048C1	TEMP SENDER HOLE	1
		BREATHER, AXLE HSG VENT	
	968936R91	1/8 IN.	1
	91916R91	3/8 IN.	1
64	474517C2	GASKET, ELIMINATOR 50CC TUBE	1
66		COVER, AXLE HSG REAR	1
		NOT SERVICED	
67		NOT USED	
68		NOT USED	
69	474517C2	GASKET, ELIMINATOR 50CC TUBE	1
70	227334R2	SHAFT, OUTPUT	1
71	210	/ BEARING, OUTPUT SHAFT	1
72	660433R1	/ RING, BRG RET SNAP	1
73	332678C2	RETAINER, OUTPUT SHFT BRG	1
74	25709R1	WASHER, FL 3/8 IN.	4
75		SPACER, BRG	
	344639C1	.185 IN. THK	AR
	344643C1	.189 IN. THK	AR
	344649C1	.195 IN. THK	AR
	344655C1	.201 IN. THK	AR
	344661C1	.207 IN. THK	AR
	366347C1	.213 IN. THK	AR
	366350C1	.219 IN. THK	AR
76	344618C21	RETAINER, W/CUPS REAR	1
		INPUT GEAR BRG	
	24840R1	BOLT, BRG RET	5
77	388355C1	NUT, INUT GEAR BRG RET	1

ITEM NO.	PART NO.	DESCRIPTION	QTY
77		DIFFERENTIAL, STD	
		2 IN. X 16 SPLINES	
		PRE-AUTOMATED AXLE SHAFT	
	468082C97	3.73-1 RATIO	
	493852C92	3.91-1 RATIO	
	468083C97	4.10-1 RATIO	
	468084C97	4.44-1 RATIO	
	468085C97	4.78-1 RATIO	
	468086C97	5.37-1 RATIO	
	468087C97	6.14-1 RATIO	
	468088C97	6.57-1 RATIO	
	468089C97	7.17-1 RATIO	
	468090C97	8.17-1 RATIO	
		2 IN. X 39 SPLINES	
		AUTOMATED AXLE SHAFT	
	572236C91	3.73-1 RATIO	
	572237C91	3.91-1 RATIO	
	572238C91	4.10-1 RATIO	
	572239C91	4.44-1 RATIO	
	572240C91	4.78-1 RATIO	
	572241C91	5.37-1 RATIO	
	572242C91	6.14-1 RATIO	
	572243C91	6.57-1 RATIO	
	572244C91	7.17-1 RATIO	
	572245C91	8.17-1 RATIO	
		NO-SPIN™	
		NO-SPIN™ DIFF. REPLACES	
		ITEMS 54 THRU 58	
		// SEE DIFF. CASE LISTING	
		WHEN CHANGING RATIOS	
		# CASE, DIFF. W/BOLTS	
		3.73 THRU 4.44-1 RATIO	
	493204C91	4.78 THRU 8.17-1 RATIO	
	493205C91		
		& GEAR SET, DIFF. SIDE AND PINION	
	493196C91	2 IN. X 16 SPLINES	
		PRE-AUTOMATED AXLE SHAFT	
	585705C91	2 IN. X 39 SPLINES	
		AUTOMATED AXLE SHAFT	
	493199C91	▲ GEAR SET, INTER AXLE DIFF.	
	493197C91	⊙ KIT, INTER AXLE DIFF. W/COVER	
	RA192FBR	/ BRG AND SEAL KIT	
	1651261C91	▶ KIT, INTER AXLE DIFF.	
	1696994C91	⊙ BOLT KIT	

PARTS LISTED IN THIS CATALOG ARE NOT NECESSARILY MANUFACTURED BY THE ORIGINAL EQUIPMENT MANUFACTURER AND ANY REFERENCE TO THE TRADEMARKS OR PART NUMBERS OF OTHERS ARE FOR CROSS REFERENCE INFORMATIONAL PURPOSES ONLY. THE TRADEMARKS OF OTHERS REFERRED TO HEREIN ARE OWNED BY THEIR RESPECTIVE COMPANIES AND ARE NOT AFFILIATED IN ANY WAY WITH MIDWEST TRUCK & AUTO PARTS, INC.® MOTIVE GEAR® AND WORLD AMERICAN® ARE THE REGISTERED TRADEMARKS OF MIDWEST TRUCK & AUTO PARTS, INC.® USE OF THE ® IN CONNECTION WITH A MARK OF MIDWEST TRUCK & AUTO PARTS, INC.® INDICATES THAT THE MARK IS REGISTERED IN AT LEAST THE UNITED STATES. NO REPRESENTATION IS MADE WITH RESPECT TO THE SOURCE OF MANUFACTURE OF ANY PARTICULAR PART. © 2005, MIDWEST TRUCK & AUTO PARTS, INC.® ALL RIGHTS RESERVED.

# INTERNATIONAL<sup>®</sup>

## RA351 REAR - REAR AXLE



PARTS LISTED IN THIS CATALOG ARE NOT NECESSARILY MANUFACTURED BY THE ORIGINAL EQUIPMENT MANUFACTURER AND ANY REFERENCE TO THE TRADEMARKS OR PART NUMBERS OF OTHERS ARE FOR CROSS REFERENCE INFORMATIONAL PURPOSES ONLY. THE TRADEMARKS OF OTHERS REFERRED TO HEREIN ARE OWNED BY THEIR RESPECTIVE COMPANIES AND ARE NOT AFFILIATED IN ANY WAY WITH MIDWEST TRUCK & AUTO PARTS, INC.<sup>®</sup> MOTIVE GEAR<sup>®</sup> AND WORLD AMERICAN<sup>®</sup> ARE THE REGISTERED TRADEMARKS OF MIDWEST TRUCK & AUTO PARTS, INC.<sup>®</sup> USE OF THE ® IN CONNECTION WITH A MARK OF MIDWEST TRUCK & AUTO PARTS, INC.<sup>®</sup> INDICATES THAT THE MARK IS REGISTERED IN AT LEAST THE UNITED STATES. NO REPRESENTATION IS MADE WITH RESPECT TO THE SOURCE OF MANUFACTURE OF ANY PARTICULAR PART. © 2005, MIDWEST TRUCK & AUTO PARTS, INC.<sup>®</sup> ALL RIGHTS RESERVED.

# INTERNATIONAL®

## RA351 REAR - REAR AXLE

ITEM NO.	PART NO.	DESCRIPTION	QTY
		AXLE, REAR REAR	
		INTL/DANA® G340S, J340S, J380S 34000/38000 LB. SGL-RED	
1	109389R1	SHAFT, AXLE 2 IN. X 16 SPLINES PRE-AUTOMATED AXLE SHFT 39 SPLINES AUTOMATED AXLE SHAFT	2
	2502179C1		2
	1649262C1		2
	895478R2	STUD, WHEEL FLG	16
	144423H	GASKET, AXLE SHFT FLG TO HUB NUT, HEX LK 5/8NF	2
2		HOUSING, AXLE SPICER®	
	595577C1	HEND® SUSP INTL® SUSP	1
	595578C1	4-SPG AND REYCO®	1
	595579C1	AIR	1
	595601C1	HEND® SUSP INTL SUSP	1
	1697109C1	4-SPG AND REYCO®	1
	1686123C1	AIR	1
3	91916R91	BREATHER, AXLE HSG VENT	1
4	586049C1	PLUG, MAGNETIC DRAIN	1
5	1696474C1	NUT, COMPANION FLG HEX LK 1-3/4NF	1
	390362R1	WASHER, PINION SHAFT	1
7	710008	SEAL, PINION OIL	1
8		NOT USED	
9	72225C	BEARING, CONE PINION	2
10	72487	BEARING, CUP PINION	2
11		SPACER, PINION BRG	
	360453C1	.718 IN. THK	AR
	360457C1	.722 IN. THK	AR
	360461C1	.726 IN. THK	AR
	360465C1	.730 IN. THK	AR
	360469C1	.734 IN. THK	AR
	393975C1	.738 IN. THK	AR
	393979C1	.742 IN. THK	AR
12	454719C91	CAGE, W/CUPS, PINION BRG	1
	1691152C1	BOLT, CAGE TO CARR.	6
13		SHIM, PINION BRG CAGE	
	896612R1	.005 IN. THK	AR
	157566R1	.010 IN. THK	AR
	157567R1	.030 IN. THK	AR
14		// GEAR SET, RING AND PINION	
	597237C91	3.73-1 RATIO	1
	597238C91	3.91-1 RATIO	1
	597239C91	4.10-1 RATIO	1
	597240C91	4.44-1 RATIO	1
	597241C91	4.78-1 RATIO	1
	597242C91	5.37-1 RATIO	1
	597243C91	6.14-1 RATIO	1
	597244C91	6.57-1 RATIO	1
	597245C91	7.17-1 RATIO	1
	597246C91	8.17-1 RATIO	1
15	MU1307TM	BEARING, PINION PILOT ROLLER	1
16	586045C1	PLUG, PIPE SQ-HD 3/4	
17	161019R93	CARRIER, W/CAPS, DIFF.	1
	1691150C1	BOLT, CARR TO HSG	
	5/8 R	WASHER, FL 5/8	12
18		GASKET, SILICONE 3 OZ. TUBE	1
20	69208R1	ADJUSTER, DIFF. BRG	2
21	157491R2	LOCK, DIFF. BRG ADJ	2
22	3/16 X 1 P	PIN, COTTER 3/16 X 1	2
23	24895R1	BOLT, DIFF. BRG CAP	4

ITEM NO.	PART NO.	DESCRIPTION	QTY
	25712R1	WASHER, DIFF. BRG CAP BOLT	4
24	47820	BEARING, DIFF. CUP	2
25	47890	BEARING, DIFF. CONE	2
26	864358R2	CASE, DIFF. PL HALF	1
27		BOLT, DIFF. CASE	
	1691256C1	3.73 THRU 4.44-1 RATIO	8
	1691255C1	4.78 THRU 8.17-1 RATIO	8
28	157494R1	WASHER, SIDE GEAR THRUST	2
29	161027R2	GEAR, DIFF. SIDE - 16 SPL.	2
	571357C1	39 SPL.	
30	864356R2	SPIDER, DIFF.	1
31	864357R2	GEAR, DIFF. PINION	4
32	864360R1	WASHER, PINION THRUST	4
33		CASE, DIFF. FLG HALF	1
	505756C1	3.73 THRU 4.44-1 RATIOS	1
	505757C1	4.78 THRU 8.17-1 RATIOS	1
34	27293R1	NUT, DIFF. CASE BOLT, HEX 9/16NF	8
35	157490R1	RIVET, RING GEAR TO DIFF. CASE	12
36		NOT USED	
37		DIFFERENTIAL, NO-SPIN™ UNIT	1
		2 IN. X 39 SPLINES COMMON WHEEL END	
		NOTE: ITEM 37 REPLACES ITEMS 28 THRU 32 WHEN NO-SPIN™ DIFF. IS USED.	
		DIFFERENTIAL, STD 2 IN. X 16 SPLINES PRE-AUTOMATED AXLE SHFT	
	482866C91	3.73-1 RATIO	
	493850C91	3.91-1 RATIO	
	482867C91	4.10-1 RATIO	
	482868C91	4.44-1 RATIO	
	482869C91	4.78-1 RATIO	
	482870C91	5.37-1 RATIO	
	482871C91	6.14-1 RATIO	
	482872C91	6.57-1 RATIO	
	482873C91	7.17-1 RATIO	
	482874C91	8.17-1 RATIO	
		DIFFERENTIAL, STD 2 IN. X 39 SPLINES AUTOMATED AXLE SHFT	
	1651342C91	3.54-1 RATIO	
	571926C91	3.73-1 RATIO	
	571927C91	9.91-1 RATIO	
	571928C91	4.10-1 RATIO	
	571929C91	4.44-1 RATIO	
	571930C91	4.78-1 RATIO	
	571931C91	5.37-1 RATIO	
	571932C91	6.14-1 RATIO	
	571933C91	6.57-1 RATIO	
	571934C91	7.17-1 RATIO	
	571935C91	8.17-1 RATIO	
		// SEE DIFF. CASE LISTING WHEN CHANGING RATIOS	
	493204C91	# CASE, DIFF. W/BOLTS	
	493205C91	# 3.73 THRU 4.44-1 RATIO	
	493196C91	# 4.78 THRU 8.17-1 RATIO	
		& GEAR SET, DIFF. SIDE AND PINION 2 IN. X	
	585705C91	& 16 SPLINES PRE-AUTOMATED AXLE SHFT	
		& 39 SPLINES AUTOMATED AXLE SHFT	
	RA192RBR	BRG AND SEAL KIT	

PARTS LISTED IN THIS CATALOG ARE NOT NECESSARILY MANUFACTURED BY THE ORIGINAL EQUIPMENT MANUFACTURER AND ANY REFERENCE TO THE TRADEMARKS OR PART NUMBERS OF OTHERS ARE FOR CROSS REFERENCE INFORMATIONAL PURPOSES ONLY. THE TRADEMARKS OF OTHERS REFERRED TO HEREIN ARE OWNED BY THEIR RESPECTIVE COMPANIES AND ARE NOT AFFILIATED IN ANY WAY WITH MIDWEST TRUCK & AUTO PARTS, INC.® MOTIVE GEAR® AND WORLD AMERICAN® ARE THE REGISTERED TRADEMARKS OF MIDWEST TRUCK & AUTO PARTS, INC.® USE OF THE ® IN CONNECTION WITH A MARK OF MIDWEST TRUCK & AUTO PARTS, INC.® INDICATES THAT THE MARK IS REGISTERED IN AT LEAST THE UNITED STATES. NO REPRESENTATION IS MADE WITH RESPECT TO THE SOURCE OF MANUFACTURE OF ANY PARTICULAR PART. © 2005, MIDWEST TRUCK & AUTO PARTS, INC.® ALL RIGHTS RESERVED.