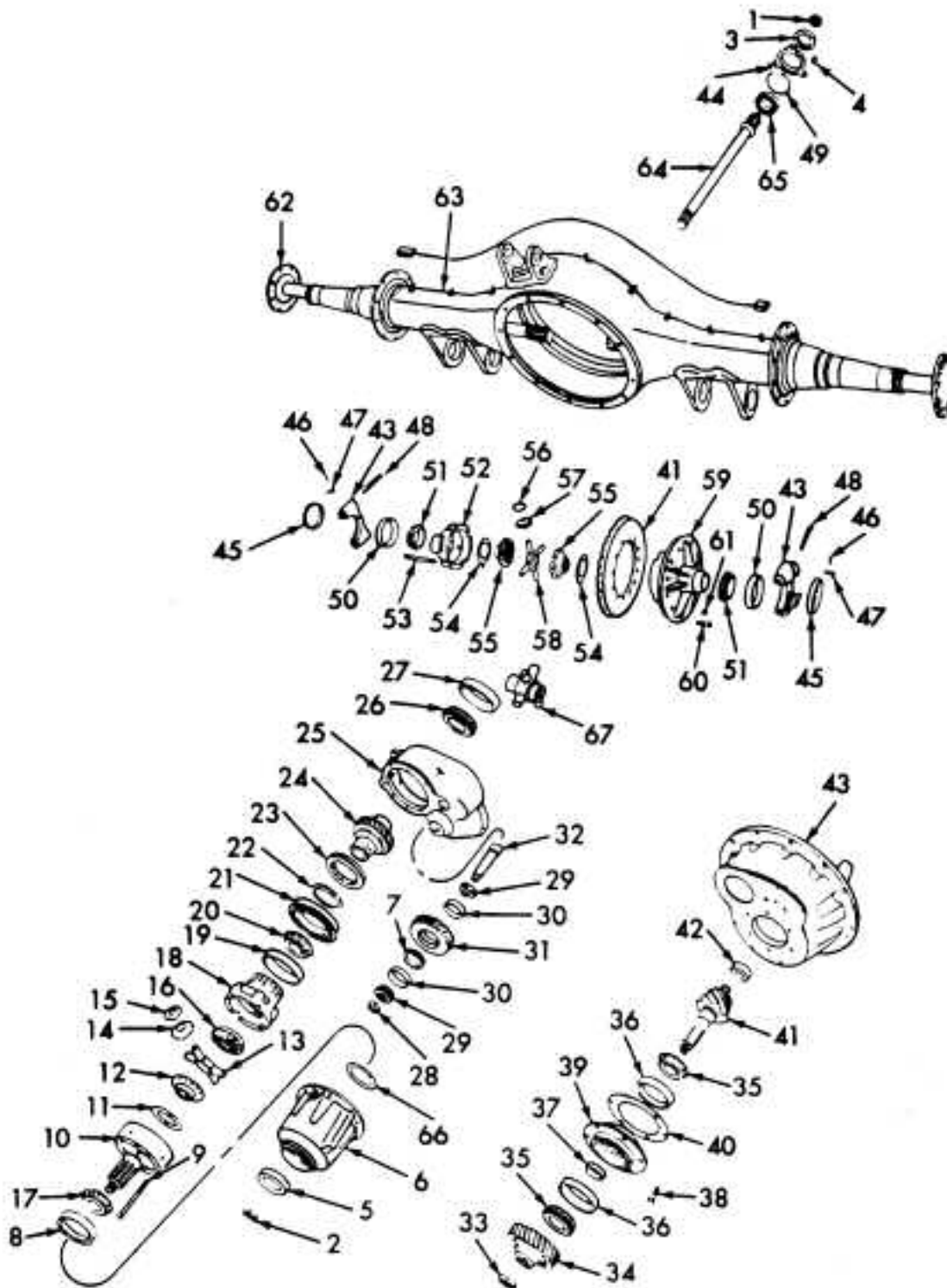


# INTERNATIONAL®

## RA474 FRONT - REAR AXLE



PARTS LISTED IN THIS CATALOG ARE NOT NECESSARILY MANUFACTURED BY THE ORIGINAL EQUIPMENT MANUFACTURER AND ANY REFERENCE TO THE TRADEMARKS OR PART NUMBERS OF OTHERS ARE FOR CROSS REFERENCE INFORMATIONAL PURPOSES ONLY. THE TRADEMARKS OF OTHERS REFERRED TO HEREIN ARE OWNED BY THEIR RESPECTIVE COMPANIES AND ARE NOT AFFILIATED IN ANY WAY WITH MIDWEST TRUCK & AUTO PARTS, INC.® MOTIVE GEAR® AND WORLD AMERICAN® ARE THE REGISTERED TRADEMARKS OF MIDWEST TRUCK & AUTO PARTS, INC.® USE OF THE ® IN CONNECTION WITH A MARK OF MIDWEST TRUCK & AUTO PARTS, INC.® INDICATES THAT THE MARK IS REGISTERED IN AT LEAST THE UNITED STATES. NO REPRESENTATION IS MADE WITH RESPECT TO THE SOURCE OF MANUFACTURE OF ANY PARTICULAR PART. © 2005, MIDWEST TRUCK & AUTO PARTS, INC.® ALL RIGHTS RESERVED.

# INTERNATIONAL<sup>®</sup>

## RA474 FRONT - REAR AXLE

ITEM NO.	PART NO.	DESCRIPTION	QTY
		AXLE, FWD REAR INTL/DANA <sup>®</sup> W460S 46000 LB. SGL-RED	
1	1696473C1	NUT, COMPANION FLG OUTPUT	1
2	440302C1 1696474C1	NUT, COMPANION FLG INPUT PRIOR TO 7/1/93 / 7/1/93 AND LATER	1
3	415013N 1691147C2	@ SEAL, OUTPUT SHAFT OIL PRIOR TO 7/15/91 7/15/91 AND LATER	1 1
4	26310R1 25709R1	BOLT, RET TO HSG WASHER, FL 3/8 IN.	4 4
5	100495	@ SEAL, INTERAXLE DIFF. HSG OIL	1
6	481119C2 1695386C1	HOUSING, INTERAXLE DIFF. PRIOR TO 7/1/93 7/1/93 AND LATER	1 1
	583164C1 583165C1	SCREW, 12 PT HD 1/2NC X 1-1/4 IN. 2 IN.	7 1
	1693855C1	GASKET, ELIMINATOR 6 ML	1
	1693856C1	50 ML	1
		PLUG, INTERAXLE DIFF. HSG DRAIN 7/1/93 AND LATER	
	586045C1 2035620C1 554204C1	W/O CODE 14WLD W/CODE 14WLD SEALANT, SILICONE, 3 OZ. TUBE	1 1 1
7		SPACER, IDLER GEAR BRG OLD DESIGN	
	463423C2 463424C2 463425C2 463426C2 463427C2 463428C2 463429C2 497865C1 497866C1	1.277 IN. THK 1.282 IN. THK 1.287 IN. THK 1.292 IN. THK 1.297 IN. THK 1.302 IN. THK 1.307 IN. THK 1.312 IN. THK 1.317 IN. THK	AR AR AR AR AR AR AR AR AR
		NEW DESIGN	
	1654953C1 1654954C1 1654955C1 1654956C1 1654957C1 1654958C1 1654959C1 1654960C1	1.632 IN. THK 1.637 IN. THK 1.642 IN. THK 1.647 IN. THK 1.652 IN. THK 1.657 IN. THK 1.662 IN. THK 1.665 IN. THK	AR AR AR AR AR AR AR AR
8	JLM710910	CUP, INTERAXLE DIFF. FRT BRG FOR SERVICE, ORDER JLM710910	1
9	27857R1	SCREW, 12 PT HD 1/2NC X 2-3/4 IN. PRIOR TO 7/1/93 RIVET, INTERAXLE DIFF. CASE 7/1/93 AND LATER	8 8
10		RIVET, INTERAXLE DIFF. CASE 7/1/93 AND LATER / CASE, INTERAXLE DIFF. FRT	1

ITEM NO.	PART NO.	DESCRIPTION	QTY
11	TRA4860 WA4860	▶/@& RACE, FRT SIDE GEAR THRUST BRG ▶/@& BEARING, FRT SIDE GEAR THRUST	2 1
12	463414C1	▶ / & GEAR, INTERAXLE DIFF. FRT SIDE	1
13	463412C1	▶ / & SPIDER, INTERAXLE DIFF.	1
14	463419C1	▶ / & GEAR, INTERAXLE DIFF. PINION	4
15	463413C1	▶ / & WASHER, INTERAXLE DIFF. PINION GEAR THRUST	4
16	463402C1	▶ / & GEAR, INTERAXLE DIFF. REAR SIDE	1
17	JLM710949	@ CONE, INTERAXLE DIFF. FRT BRG FOR SERVICE, ORDER JLM710949	1
18		▶ / CASE, INTERAXLE DIFF. REAR	1
19	28921	@ CUP, INTERAXLE DIFF. REAR CASE BRG	1
20	28985	@ CONE, INTERAXLE DIFF. REAR CASE BRG	1
21	XLS5-1/8A	@ BEARING, INTERAXLE DIFF. REAR BALL	1
22	495024C1	RING, INTERAXLE DIFF. REAR BRG RET	1
23	463430C2	COLLAR, SHIFT CLUTCH	1
24	481108C1	GEAR, DIFF. INPUT	1
25	592535C1 592534C92 378066R1 584278C1	CASE, INTERAXLE DIFF. CYLINDER, SHIFT RING, RET SPRING, COMPRESSION SCREW, 12 PT HD 1/2NC X 1-1/4 IN. 2 IN.	1 1 1 1 5 6
	583164C1 583166C1	PLUG, DRAIN W/O CODE 14WLD W/CODE 14WLD	1 1
	1693855C1	GASKET, ELIMINATOR 6 ML	1
	1693856C1	50 ML	1
	554204C1 504810C91 504131C1 587212C1 463400C2	SEALANT, SILICONE, 3 OZ TUBE FORK, SHIFT W/INSERTS INSERT, SHIFT FORK SHAFT, CASE COVER, DIFF. CASE	1 1 1 1 1
26	JLM710949	@ CONE, INPUT GEAR BRG	1
27	JLM710910	@ CUP, INPUT GEAR BRG	1
28	1696472C1	NUT, IDLER GEAR SHAFT STOP	1
29	3877 M802048	@ CONE, IDLER GEAR BRG OLD DESIGN NEW DESIGN	2 2
30	3820 M802011	@ CUP, IDLER GEAR BRG OLD DESIGN NEW DESIGN	2 2
31	481107C91 1654949C91	LARGE BEARING 3.75" SMALL BEARING 3.25"	1

PARTS LISTED IN THIS CATALOG ARE NOT NECESSARILY MANUFACTURED BY THE ORIGINAL EQUIPMENT MANUFACTURER AND ANY REFERENCE TO THE TRADEMARKS OR PART NUMBERS OF OTHERS ARE FOR CROSS REFERENCE INFORMATIONAL PURPOSES ONLY. THE TRADEMARKS OF OTHERS REFERRED TO HEREIN ARE OWNED BY THEIR RESPECTIVE COMPANIES AND ARE NOT AFFILIATED IN ANY WAY WITH MIDWEST TRUCK & AUTO PARTS, INC.<sup>®</sup> MOTIVE GEAR<sup>®</sup> AND WORLD AMERICAN<sup>®</sup> ARE THE REGISTERED TRADEMARKS OF MIDWEST TRUCK & AUTO PARTS, INC.<sup>®</sup> USE OF THE ® IN CONNECTION WITH A MARK OF MIDWEST TRUCK & AUTO PARTS, INC.<sup>®</sup> INDICATES THAT THE MARK IS REGISTERED IN AT LEAST THE UNITED STATES. NO REPRESENTATION IS MADE WITH RESPECT TO THE SOURCE OF MANUFACTURE OF ANY PARTICULAR PART. © 2005, MIDWEST TRUCK & AUTO PARTS, INC.<sup>®</sup> ALL RIGHTS RESERVED.

# INTERNATIONAL®

## RA474 FRONT - REAR AXLE

ITEM NO.	PART NO.	DESCRIPTION	QTY
32	463420C2	SHAFT, IDLER GEAR	1
33	83799	NUT, PINION SHAFT CASTELLATED	1
	19415R1	PIN, SLT	1
34	482763C1	GEAR, PINION SHAFT DRIVEN	1
35	@	CONE, PINION BRG	
	H715343	INNER	1
	HM813844	OUTER	1
36	@	CUP, PINION BRG	
	H715311	INNER	1
	HM813810	OUTER	1
37		SPACER, PINION BRG INNER	
	1651818C1	.894 IN. THK	AR
	1651819C1	.896 IN. THK	AR
	1651820C1	.898 IN. THK	AR
	1651821C1	.900 IN. THK	AR
	1651822C1	.902 IN. THK	AR
	1651823C1	.904 IN. THK	AR
	1651824C1	.906 IN. THK	AR
	1651825C1	.908 IN. THK	AR
	1651826C1	.910 IN. THK	AR
	1693399C1	.911 IN. THK	AR
	1693400C1	.916 IN. THK	AR
	892790R1	OUTER .375 IN. THK	1
38		BOLT, PINION BRG CAGE	
	1691247C1	PRIOR TO 07/1/93	6
	1691152C1	7/1/93 AND LATER	8
39	482784C91	CAGE, PINION BRG, W/CUPS	1
40		SHIM, PINION, PINION BRG CAGE	
	463435C2	.005 IN. THK	AR
	463436C2	.010 IN. THK	AR
41	//	GEAR SET, RING AND PINION	
	597247C91	3.54-1 RATIO	1
	597248C91	3.73-1 RATIO	1
	597249C91	3.91-1 RATIO	1
	597250C91	4.10-1 RATIO	1
	597251C91	4.44-1 RATIO	1
	597252C91	4.78-1 RATIO	1
	597253C91	5.38-1 RATIO	1
	1698376C91	5.63-1 RATIO	1
	597254C91	6.14-1 RATIO	1
	597255C91	6.57-1 RATIO	1
	597256C91	7.17-1 RATIO	1
	& &	BOLT, RING GEAR TO DIFF. CASE	AR
42	MU1308UM	@ BEARING, PINION PILOT	1
43	463395C92	CARRIER, DIFF, W/CAPS SCREW, 12 PT HD 5/8NC X 1-3/4 IN.	1
	1691150C1	2-3/4 IN.	6
	1691151C1		2
	1693856C1	GASKET, ELIMINATOR 50 ML	1
	@@	STUD, CARR TO HSG	4
	@@	WASHER, FL	4
	@@	NUT, STUD	4
44	481811C1	CAGE, OUTPUT SHAFT BRG	1
45	161066R2	ADJUSTER, DIFF. BRG	2
46	3/16 X 1 P	PIN, COTTER 3/16 X 1 IN.	2
47	157491R2	LOCK, DIFF. BRG ADJ	2
48		BOLT, DIFF. BRG CAP PRIOR TO 7/1/93	4

ITEM NO.	PART NO.	DESCRIPTION	QTY
	1691245C1	7/1/93 AND LATER	4
	25712R1	WASHER, DIFF. BRG CAP BOLT	4
49	660433R1	RING, OUTPUT SHAFT BRG SNAP	1
50	56650	@ CUP, DIFF. BRG	2
51	56425	@ CONE, DIFF. BRG	2
52	161080R3	# CASE, DIFF. PL HALF	1
53	#	BOLT, DIFF. CASE	
	1691250C1	3.54-1 RATIO	8
	1691249C1	3.73 THRU 4.44-1 RATIOS	8
	1691248C1	4.78 THRU 7.17-1 RATIOS	8
54	161064R1	▲ WASHER, DIFF. SIDE GEAR THRUST	2
	161078R2	22 SPLINE	
55	571356C1	▲ GEAR, DIFF. SIDE - 46 SPL.	2
56	161061R2	▲ WASHER, DIFF. PINION GEAR THRUST	4
57	161042R3	▲ GEAR, DIFF. PINION	4
58	161069R3	▲ SPIDER, DIFF.	1
59	#	CASE, DIFF. FLG HALF	1
	584284C1	3.54-1 RATIO	1
	208523R5	3.73 THRU 4.44-1 RATIOS	1
	161091R5	4.78 THRU 7.17-1 RATIOS	1
	336247C2	SCOOP, OIL, DIFF. CASE PRIOR TO 7/1/93	1
	25752R1	BOLT, OIL SCOOP PRIOR TO 7/1/93	6
60	161060R1	& & RIVET, RING GEAR TO DIFF. CASE	12
61	274639	NUT, DIFF. CASE BOLT	8
62		SHAFT, AXLE	
	161087R2	2-21/64 IN. X 22 SPLINES PRE-COMMON WHEEL END	2
		2-3/8 IN. X 46 SPLINES COMMON WHEEL END	
	571351C2	W/O CODE 844004	2
	1654168C1	W/CODE 844004	2
		STUD, WHEEL FLG	16
		NUT, HEX NY-LOCK® EXC CODE 844004	16
	9412368	3/4-16UNF	16
	144423H	FOR CODE 844004 5/8-18UNF	16
	54700R1	BUSHING, AXLE SHAFT STUD CODE 844004	16
		GASKET, AXLE SHAFT FLG	
	895493R2	EXC CODE 844004	2
	56152R2	FOR CODE 844004	2
63		HOUSING, AXLE	
		PRE-COMMON WHEEL END	
		HEND® SUSP	
	463465C92	W/O TTR-BRKT	1
	501172C93	W/TTR-BRKT	1
	572160C93	NEWAY® AIR SUSP COMMON WHEEL END	1
		HEND® SUSP	
		EXC AIR SUSP, RT441 SUSP	
		W/O 2-BOLT TTR-BRKT	
	595609C1	W/O 12.8, 15.5 HI TR-BRKT	1

PARTS LISTED IN THIS CATALOG ARE NOT NECESSARILY MANUFACTURED BY THE ORIGINAL EQUIPMENT MANUFACTURER AND ANY REFERENCE TO THE TRADEMARKS OR PART NUMBERS OF OTHERS ARE FOR CROSS REFERENCE INFORMATIONAL PURPOSES ONLY. THE TRADEMARKS OF OTHERS REFERRED TO HEREIN ARE OWNED BY THEIR RESPECTIVE COMPANIES AND ARE NOT AFFILIATED IN ANY WAY WITH MIDWEST TRUCK & AUTO PARTS, INC.® MOTIVE GEAR® AND WORLD AMERICAN® ARE THE REGISTERED TRADEMARKS OF MIDWEST TRUCK & AUTO PARTS, INC.® USE OF THE ® IN CONNECTION WITH A MARK OF MIDWEST TRUCK & AUTO PARTS, INC.® INDICATES THAT THE MARK IS REGISTERED IN AT LEAST THE UNITED STATES. NO REPRESENTATION IS MADE WITH RESPECT TO THE SOURCE OF MANUFACTURE OF ANY PARTICULAR PART. © 2005, MIDWEST TRUCK & AUTO PARTS, INC.® ALL RIGHTS RESERVED.

# INTERNATIONAL®

## RA474 FRONT - REAR AXLE

ITEM NO.	PART NO.	DESCRIPTION	QTY
63	595614C1	W/12.8 HI TTR-BRKT	1
	595613C2	W/15.5 HI TTR-BRKT	1
	595613C2	ORDER 595609C1 HSG AND 591407C4 TR-BRKT	
		W/2-BOLT TTR-BRKT W/O 2-BOLT BEAM HANGER BRKT	
		EXC RT461 SUSP	
1663957C1		W/O 12.8 HI TTR-BRKT	1
1668716C1		W/12.8 HI TTR-BRKT ORDER 1663957C1 HSG AND 595622C	1
		TTR-BRKT	
1677769C1		FOR RT461 SUSP ORDER 1663957C1 HSG AND 4-683738R1 SPACER	1
		W/2-BOLT BEAM HANGER BRKT	
1683727C1		W/O 12.8 17 HI TTR-BRKT	1
1683729C1		W/12.8 HI TTR-BRKT ORDER 1683727C1 HSG AND 595622C2	1
		TTR-TRBK	
2032 096C1		W/17 HI TTR-BRKT	1
1697110C1		FOR AIR SUSP	1
595715C1		FOR RT441 SUSP ORDER 595609C1 HSG AND 4-683738R1 SPACER	1
		INTL SUSP	
		R-SPG	
2502412C1		W/O ABS, ATC	1
2502412C1		W/ABS, ATC	1
1697110C1		AIR	1
		NEWAY® AIR SUSP	
1660703C1		W/O 2-BOLT TTR-BRKT ORDER 595609C1 HSG AND 595622C2 TTR-BRKT	1
		W/2-BOLT TTR-BRKT W/O 2-BOLT BEAM HANGER BRKT	
2015525C1		ORDER 2015366C1 HSG AND 595622C2 TTR-BRKT	1
		W/2-BOLT BEAM HANGER BRKT	
2027660C1		ORDER 1683727C1 HSG AND 595622C2 TTR-BRKT	1
		CHALMERS® SUSP BRACKET, TRANSVERSE TORQUE ROD	1
		12.8 IN.	1
		15.5 IN.	1
		PLUG, FILLER	
		W/O CODE 14WLD	1
		W/CODE 14WLD	1

ITEM NO.	PART NO.	DESCRIPTION	QTY
		PLUG, AXLE HSG	
	586049C1	MAGNETIC DRAIN	1
	586048C1	TEMP SENDER HOLE	1
	91916R91	BREATHER, AXLE HSG	1
	446839C1	GASKET, SILICONE 4.7 OZ. TUBE	1
64	464237C2	SHAFT, OUTPUT	1
65	210	@ BEARING, OUTPUT SHAFT BALL	1
66		SHIM, INTERAXLE DIFF. BRG	
	496276C1	.026 IN. THK	AR
	496277C1	.033 IN. THK	AR
	482040C1	.040 IN. THK	AR
	482041C1	.047 IN. THK	AR
	482042C1	.054 IN. THK	AR
	482043C1	.061 IN. THK	AR
	482044C1	.068 IN. THK	AR
	482045C1	.075 IN. THK	AR
67		DIFFERENTIAL, NO-SPIN™ <b>NOTE:</b> ITEM 67 REPLACES ITEMS 54 THRU 58 WHEN  NO-SPIN™ DIFF. IS USED.	
		DIFFERENTIAL, STD PRE-COMMON WHEEL END 2-21/64 IN. X 22 SPLINES	
	991233C91	3.73-1 RATIO	
	991234C91	3.91-1 RATIO	
	991235C91	4.10-1 RATIO	
	991236C91	4.44-1 RATIO	
	991237C91	4.78-1 RATIO	
	991238C91	5.38-1 RATIO	
	991239C91	6.14-1 RATIO	
	991240C91	6.57-1 RATIO	
	991241C91	7.17-1 RATIO	
		COMMON WHEEL END 2-3/8 IN. X 46 SPLINES	
	1695375C91	3.54-1 RATIO	
	1695376C91	3.73-1 RATIO	
	1695377C91	3.91-1 RATIO	
	1695378C91	4.10-1 RATIO	
	1695379C91	4.44-1 RATIO	
	1695380C91	4.78-1 RATIO	
	1695381C91	5.38-1 RATIO	
	1695382C91	6.14-1 RATIO	
	1695383C91	6.57-1 RATIO	
	1695384C91	7.17-1 RATIO	
	2500823C91	5.63-1 RATIO	
		FOR NO-SPIN™ APPLICATIONS, ORDER STD DIFF. AND ITEM NO. 67	

PARTS LISTED IN THIS CATALOG ARE NOT NECESSARILY MANUFACTURED BY THE ORIGINAL EQUIPMENT MANUFACTURER AND ANY REFERENCE TO THE TRADEMARKS OR PART NUMBERS OF OTHERS ARE FOR CROSS REFERENCE INFORMATIONAL PURPOSES ONLY. THE TRADEMARKS OF OTHERS REFERRED TO HEREIN ARE OWNED BY THEIR RESPECTIVE COMPANIES AND ARE NOT AFFILIATED IN ANY WAY WITH MIDWEST TRUCK & AUTO PARTS, INC.® MOTIVE GEAR® AND WORLD AMERICAN® ARE THE REGISTERED TRADEMARKS OF MIDWEST TRUCK & AUTO PARTS, INC.® USE OF THE ® IN CONNECTION WITH A MARK OF MIDWEST TRUCK & AUTO PARTS, INC.® INDICATES THAT THE MARK IS REGISTERED IN AT LEAST THE UNITED STATES. NO REPRESENTATION IS MADE WITH RESPECT TO THE SOURCE OF MANUFACTURE OF ANY PARTICULAR PART. © 2005, MIDWEST TRUCK & AUTO PARTS, INC.® ALL RIGHTS RESERVED.

# INTERNATIONAL<sup>®</sup>

## RA474 FRONT - REAR AXLE

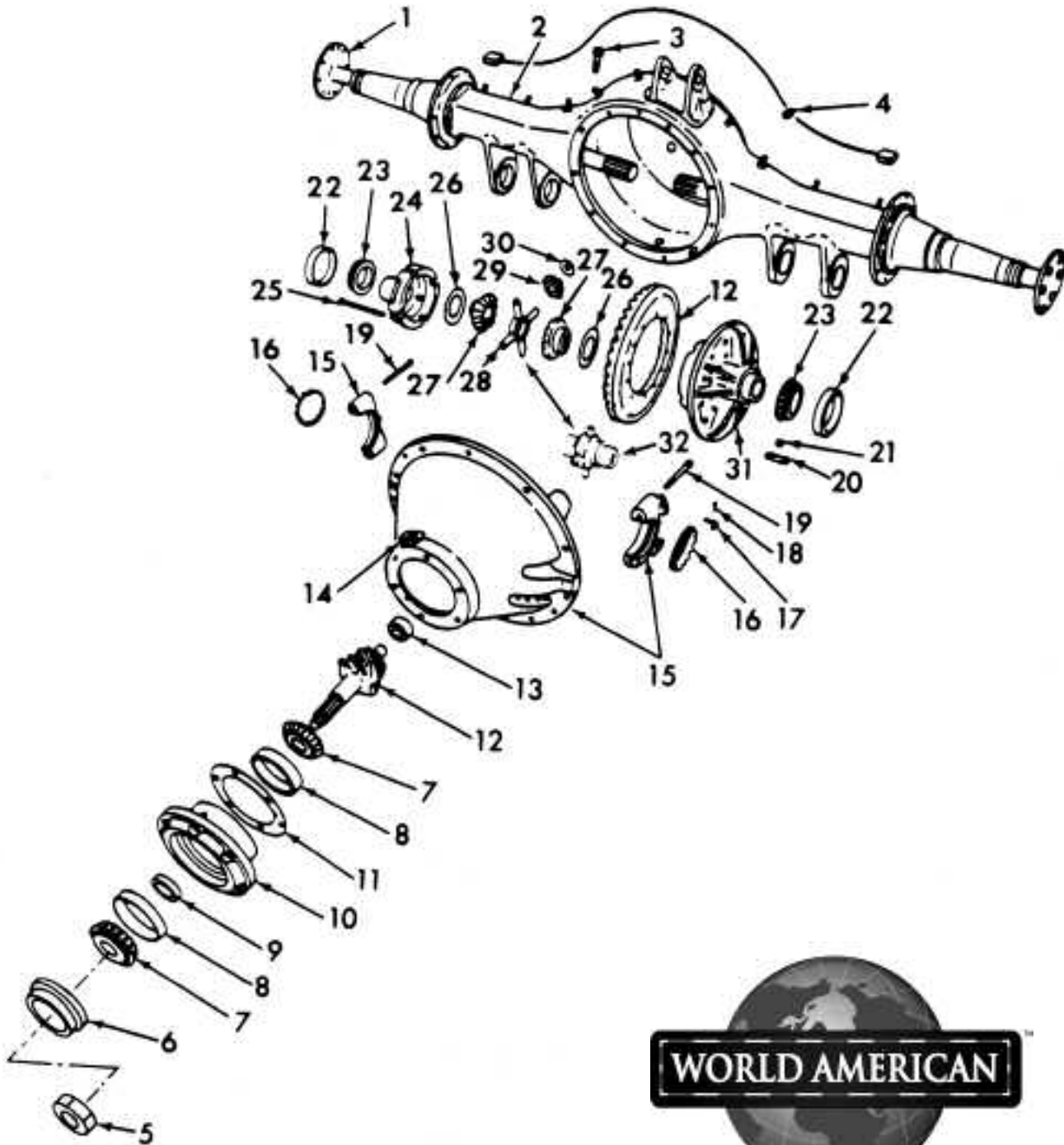
ITEM NO.	PART NO.	DESCRIPTION
		// SEE DIFF. CASE LISTING WHEN CHANGING RATIO
	#	CASE, DIFF. W/BOLTS
586703C91	#	3.54-1 RATIO
493206C91	#	3.73 THRU 4.44-1 RATIOS
493207C91	#	4.78 THRU 7.17-1 RATIOS
493198C91	▲	GEAR SET, DIFF. SIDE AND PINION 2-21/64 IN. X 22 SPLINES PRE-COMMON WHEEL END
585707C91	▲	2-3/8 IN. X 46 SPLINES COMMON WHEEL END
493200C91	&	GEAR SET, INTERAXLE DIFF. SIDE AND PINION
578500C91	▶	KIT, INTERAXLE DIFF. W/HSG PRIOR TO 7/1/93
1695389C91	/	KIT, INTERAXLE DIFF. 7/1/93 AND LATER
RA201FR	@	BRG AND SEAL KIT
1697352C91	&&	KIT, RING GEAR BOLT AND NUT
		BREAKDOWN - N/A
1685359C91	@@	KIT, BOLT AND STUD



PARTS LISTED IN THIS CATALOG ARE NOT NECESSARILY MANUFACTURED BY THE ORIGINAL EQUIPMENT MANUFACTURER AND ANY REFERENCE TO THE TRADEMARKS OR PART NUMBERS OF OTHERS ARE FOR CROSS REFERENCE INFORMATIONAL PURPOSES ONLY. THE TRADEMARKS OF OTHERS REFERRED TO HEREIN ARE OWNED BY THEIR RESPECTIVE COMPANIES AND ARE NOT AFFILIATED IN ANY WAY WITH MIDWEST TRUCK & AUTO PARTS, INC.<sup>®</sup> MOTIVE GEAR<sup>®</sup> AND WORLD AMERICAN<sup>®</sup> ARE THE REGISTERED TRADEMARKS OF MIDWEST TRUCK & AUTO PARTS, INC.<sup>®</sup> USE OF THE '®' IN CONNECTION WITH A MARK OF MIDWEST TRUCK & AUTO PARTS, INC.<sup>®</sup> INDICATES THAT THE MARK IS REGISTERED IN AT LEAST THE UNITED STATES. NO REPRESENTATION IS MADE WITH RESPECT TO THE SOURCE OF MANUFACTURE OF ANY PARTICULAR PART. © 2005, MIDWEST TRUCK & AUTO PARTS, INC.<sup>®</sup> ALL RIGHTS RESERVED.

# INTERNATIONAL<sup>®</sup>

## RA474 REAR - REAR AXLE



PARTS LISTED IN THIS CATALOG ARE NOT NECESSARILY MANUFACTURED BY THE ORIGINAL EQUIPMENT MANUFACTURER AND ANY REFERENCE TO THE TRADEMARKS OR PART NUMBERS OF OTHERS ARE FOR CROSS REFERENCE INFORMATIONAL PURPOSES ONLY. THE TRADEMARKS OF OTHERS REFERRED TO HEREIN ARE OWNED BY THEIR RESPECTIVE COMPANIES AND ARE NOT AFFILIATED IN ANY WAY WITH MIDWEST TRUCK & AUTO PARTS, INC.<sup>®</sup> MOTIVE GEAR<sup>®</sup> AND WORLD AMERICAN<sup>®</sup> ARE THE REGISTERED TRADEMARKS OF MIDWEST TRUCK & AUTO PARTS, INC.<sup>®</sup> USE OF THE <sup>®</sup> IN CONNECTION WITH A MARK OF MIDWEST TRUCK & AUTO PARTS, INC.<sup>®</sup> INDICATES THAT THE MARK IS REGISTERED IN AT LEAST THE UNITED STATES. NO REPRESENTATION IS MADE WITH RESPECT TO THE SOURCE OF MANUFACTURE OF ANY PARTICULAR PART. © 2005, MIDWEST TRUCK & AUTO PARTS, INC.<sup>®</sup> ALL RIGHTS RESERVED.

# INTERNATIONAL®

## RA474 REAR - REAR AXLE

ITEM NO.	PART NO.	DESCRIPTION	QTY
1	161087R2	AXLE, REAR REAR	2
		INTL/DANA® 2460S	
		46000 LB. SGL-RED	
		SHAFT, AXLE	
		2-21/64 IN. X 22 SPLINES	
		PRE-COMMON WHEEL END	
		2-3/8 IN. X 46 SPLINES	
		COMMON WHEEL END	
		EXC CODE 844004	
		FOR CODE 844004	
	571351C2	EXC CODE 844004	2
	1654168C1	FOR CODE 844004	2
		STUD, WHEEL FLG	16
	9412368	NUT, HEX LK	16
	144423H	3/4	16
		5/8	16
		FOR CODE 844004	
	54700R1	BUSHING, AXLE SHAFT FLG	16
		FOR CODE 844004	
	895493R2	GASKET, AXLE SHAFT FLG	2
	56152R2	EXC CODE 844004	
		FOR CODE 844004	
	2		HOUSING, AXLE
		PRE-COMMON WHEEL END	
	495033C2	INTL 4-SPG SUSP	1
	497883C2	INTL AIR SUSP	1
		HEND® SUSP	1
		STANDARD	
		RT441 SUSP	1
		RE-ORDER 464243C92	
		AND 683738R1	
	501174C92	TTR-BRKT	1
		COMMON WHEEL END	
		INTL SUSP	
	1686120C1	4-SPG	1
		AIR	
	1686121C1	W/O ABS BLOCKS	1
	1686121C1	W/ABS BLOCKS	1
		HEND® SUSP	12
		W/O 2-BOLT TTR-BRKT	
		EXC AIR SUSP	
		RT441 SUSP	
	595616C1	W/O 12.8, 15.5 HI	
		TTR-BRKT	
	595621C1	W/12.8 TTR-BRKT	1
	595620C2	W/15.5 TTR-BRKT	1
	595716C1	FOR RT441 SUSP	1
		RE-ORDER 595616C1	
		HSG AND 4PCS	
		683738R1 SPACER	
		FOR AIR SUSP	
	1686121C1	W/O ABS BLOCKS	1
	1686121C1	W/ABS BLOCKS	1
		W/2-BOLT TTR-BRKT	1
		W/O 2-BOLT BEAM	
		HANGER BRACKET	
		W/O RT461 SUSP	
	1663958C1	W/O 12.8 HI TTR-BRKT	1

ITEM NO.	PART NO.	DESCRIPTION	QTY
	1668717C1	W/12.8 HI TTR-BRKT	1
	1677770C1	W/RT461 SUSP	1
		W/2-BOLT BEAM HANGER	
		BRACKET	
	1699214C1	W/O 12.8, 17 HI	1
		TTR-BRK	
	1683730C1	W/12.8 HI TTR-BRKT	1
	2032097C1	W/17 HI TTR-BRKT	1
		NEWAY® AIR SUSP	1
		EXC CODE 14677	
	1660704C1	EXC 8.75 RIDE HEIGHT	1
	2015526C1	FOR 8.75 RIDE HEIGHT	1
	1654220C91	FOR CODE 14677	1
	1516332C1	CHALMERS® AIR SUSP	
	586048C1	PLUG, TEMP SENDER HOLE	1
3	91916R91	BREATHER, AXLE HSG VENT	1
4	586049C1	PLUG, MAGNETIC PIPE DRAIN	1
5	440302C1	NUT, COMPANION FLG	1
	390362R1	WASHER, COMPANION FLG NUT	1
6		@ SEAL, PINION OIL	
	710008	PRIOR TO 7/15/91	1
	1691143C2	U/15/91 AND LATER	1
	892790R1	SPACER, PINION BRG -OTR-	1
		.375 IN. THK	
7		@ BEARING, PINION CONE	
	H715343	INNER	1
	HM813844	OUTER	1
8		@ BEARING, PINION CUP	
	H715311	INNER	1
	HM813810	OUTER	1
9		SPACER, PINION INNER BRG	
	1651818C1	.894 IN. THK	AR
	1651819C1	.896 IN. THK	AR
	1651820C1	.898 IN. THK	AR
	1651821C1	.900 IN. THK	AR
	1651822C1	.902 IN. THK	AR
	1651823C1	.904 IN. THK	AR
	1651824C1	.906 IN. THK	AR
	1651825C1	.908 IN. THK	AR
	1651826C1	.910 IN. THK	AR
	1693399C1	.911 IN. THK	AR
	1693400C1	.916 IN. THK	AR
10	482782C91	CAGE, W/CUPS, PINION BRG	1
	1691247C1	BOLT, CAGE TO CARR	6
11		SHIM, PINION BRG CAGE	
	966191R2	.005 IN. THK	AR
	161070R2	.010 IN. THK	AR
12		// GEAR SET, RING AND PINION	
	597247C91	3.54-1 RATIO	1
	597248C91	3.73-1 RATIO	1
	597249C91	3.91-1 RATIO	1
	597250C91	4.10-1 RATIO	1
	597251C91	4.44-1 RATIO	1
	597252C91	4.78-1 RATIO	1
	597253C91	5.38-1 RATIO	1
	1698376C91	5.63-1 RATIO	1
	597254C91	6.14-1 RATIO	1

PARTS LISTED IN THIS CATALOG ARE NOT NECESSARILY MANUFACTURED BY THE ORIGINAL EQUIPMENT MANUFACTURER AND ANY REFERENCE TO THE TRADEMARKS OR PART NUMBERS OF OTHERS ARE FOR CROSS REFERENCE INFORMATIONAL PURPOSES ONLY. THE TRADEMARKS OF OTHERS REFERRED TO HEREIN ARE OWNED BY THEIR RESPECTIVE COMPANIES AND ARE NOT AFFILIATED IN ANY WAY WITH MIDWEST TRUCK & AUTO PARTS, INC.® MOTIVE GEAR® AND WORLD AMERICAN® ARE THE REGISTERED TRADEMARKS OF MIDWEST TRUCK & AUTO PARTS, INC.® USE OF THE ® IN CONNECTION WITH A MARK OF MIDWEST TRUCK & AUTO PARTS, INC.® INDICATES THAT THE MARK IS REGISTERED IN AT LEAST THE UNITED STATES. NO REPRESENTATION IS MADE WITH RESPECT TO THE SOURCE OF MANUFACTURE OF ANY PARTICULAR PART. © 2005, MIDWEST TRUCK & AUTO PARTS, INC.® ALL RIGHTS RESERVED.

# INTERNATIONAL<sup>®</sup>

## RA474 REAR - REAR AXLE

ITEM NO.	PART NO.	DESCRIPTION	QTY
	597255C91	6.57-1 RATIO	1
	597256C91	7.17-1 RATIO	1
	1697352C91	KIT, BOLT	1
13	MU1308UM	@ BEARING, PINION PILOT	1
14	586045C1	PLUG, PIPE SQ-SOCKET 3/4 FILLER	1
15	451918C92	CARRIER, W/CAPS, DIFF. BOLT, FLG HEX-HD 5/8UNC X 1-3/4 IN.	1
	1691150C1	1-3/4 IN.	10
	1691151C1	2-3/4 IN.	2
	5/8 R	WASHER, LK 5/8	12
	446839C1	GASKET, SILICONE 4.7 OZ. TUBE	1
		▶ STUD, CARR TO HSG	4
		▶ WASHER, FL	12
		▶ NUT, HEX	4
16	161066R2	ADJUSTER, DIFF. BRG	2
17	157491R2	LOCK, DIFF. BRG ADJ	2
18	3/16 X 1 P	PIN, COTTER 3/16 X 1 IN.	2
19	24896R1	BOLT, DIFF. BRG CAP	4
	25712R1	WASHER, DIFF. BRG CAP BOLT	4
20	161060R1	RIVET, RING GEAR TO DIFF. CASE	12
21	274639	# NUT, DIFF. CASE BOLT 5/8NF IN.	8
22	56650	@ BEARING, DIFF. CUP	2
23	56425	@ BEARING, DIFF. CONE	2
24	161080R3	# CASE, DIFF. PL HALF	1
25		# BOLT, DIFF. CASE	
	1691250C1	3.54-1 RATIO	8
	1691249C1	3.73 THRU 4.44-1 RATIOS	8
	1691248C1	4.78 THRU 7.17-1 RATIOS	8
26	161064R1	▲ WASHER, SIDE GEAR THRUST	2
27	161078R2	▲ GEAR, DIFF. SIDE - 22 SPL.	2
28	161069R3	▲ SPIDER, DIFF. 46 SPL.	1
	571356C1		
29	161042R3	▲ GEAR, DIFF. PINION	4
30	161061R2	▲ WASHER, PINION GEAR THRUST	4
31		# CASE, DIFF. FLG HALF	
	584284C1	3.54-1 RATIO	1
	208523R5	3.73 THRU 4.44-1 RATIOS	1
	161091R5	4.78 THRU 7.17-1 RATIOS	1
	336247C2	SCOOP, OIL	1
	25752R1	BOLT, HEX-HD 1/4UNC X 1/2 IN.	2
32		DIFFERENTIAL, NO-SPIN™ 2-3/8 IN. X 46 SPLINES COMMON WHEEL END <b>NOTE: ITEM 32 REPLACES ITEMS 26 THRU 30 WHEN NO-SPIN™ DIFF IS USED.</b>	1
		DIFFERENTIAL, STD 2-21/64 IN. X 22 SPLINES PRE-COMMON WHEEL END	
	459907C94	3.73-1 RATIO	
	459908C94	3.91-1 RATIO	
	459909C94	4.10-1 RATIO	
32	459910C94	4.44-1 RATIO	

ITEM NO.	PART NO.	DESCRIPTION	QTY
	459911C94	4.78-1 RATIO	
	459912C94	5.38-1 RATIO	
	459913C94	6.14-1 RATIO	
	459914C94	6.57-1 RATIO	
	459915C94	7.17-1 RATIO	
		DIFFERENTIAL, STD 2-3/8 IN. X 46 SPLINES COMMON WHEEL END	
	584287C92	3.54-1 RATIO	
	574512C92	3.73-1 RATIO	
	574513C92	3.91-1 RATIO	
	574514C92	4.10-1 RATIO	
	574515C92	4.44-1 RATIO	
	574516C92	4.78-1 RATIO	
	574517C92	5.38-1 RATIO	
	2500824C91	5.63-1 RATIO	
	574518C92	6.14-1 RATIO	
	574519C92	6.57-1 RATIO	
	574520C92	7.17-1 RATIO	
		// SEE DIFF. CASE LISTING WHEN CHANGING RATIOS.	
		# CASE, DIFF. W/BOLTS AND NUTS	
	586703C91	3.54-1 RATIO	
	493206C91	3.71 THRU 4.44-1 RATIOS	
	493207C91	4.78 THRU 7.17-1 RATIOS	
		▲ GEAR SET, DIFF. SIDE AND PINION	
	493198C91	2-21/64 IN. X 22 SPLINES PRE-COMMON WHEEL END	
	585707C91	2-3/8 IN. X 46 SPLINES COMMON WHEEL END	
	RA201RR	@ BRG AND SEAL KIT	
	1685359C91	▶ KIT, BOLT AND STUD	

**Ask About World American™  
OE Quality Clutch Kits**

PARTS LISTED IN THIS CATALOG ARE NOT NECESSARILY MANUFACTURED BY THE ORIGINAL EQUIPMENT MANUFACTURER AND ANY REFERENCE TO THE TRADEMARKS OR PART NUMBERS OF OTHERS ARE FOR CROSS REFERENCE INFORMATIONAL PURPOSES ONLY. THE TRADEMARKS OF OTHERS REFERRED TO HEREIN ARE OWNED BY THEIR RESPECTIVE COMPANIES AND ARE NOT AFFILIATED IN ANY WAY WITH MIDWEST TRUCK & AUTO PARTS, INC.® MOTIVE GEAR® AND WORLD AMERICAN® ARE THE REGISTERED TRADEMARKS OF MIDWEST TRUCK & AUTO PARTS, INC.® USE OF THE ® IN CONNECTION WITH A MARK OF MIDWEST TRUCK & AUTO PARTS, INC.® INDICATES THAT THE MARK IS REGISTERED IN AT LEAST THE UNITED STATES. NO REPRESENTATION IS MADE WITH RESPECT TO THE SOURCE OF MANUFACTURE OF ANY PARTICULAR PART. © 2005, MIDWEST TRUCK & AUTO PARTS, INC.® ALL RIGHTS RESERVED.