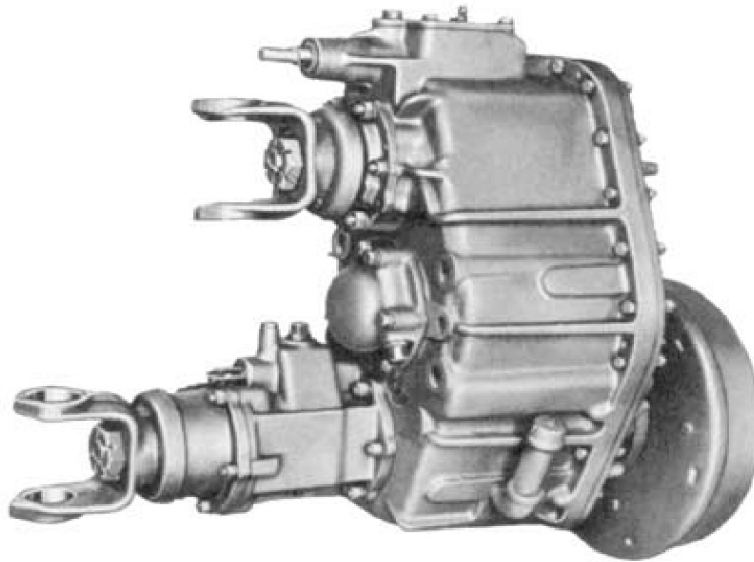


T-226 Series Transfer Cases

Catalog PB-90200



Strength • Power • Speed • Agility

MERITOR PARTS. RIGHT FROM THE START.

INTRODUCTION

This parts book is designed so that you can look up parts numbers in two different ways.

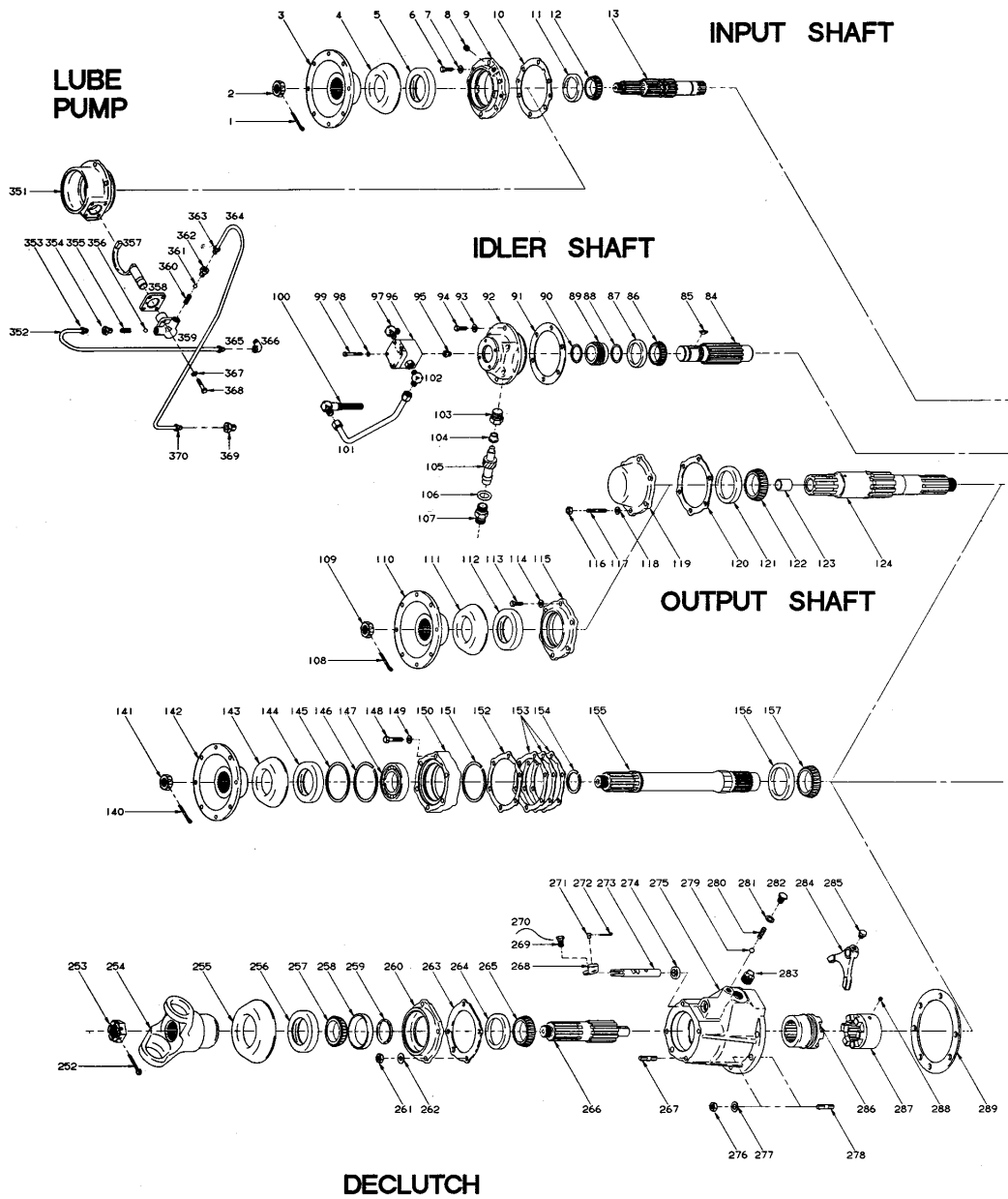
1. If you know the model number of the transfer case, for example, T-226-28, you simply match the item number in the picture with the item number on the parts list. The parts list shows which part number is used on each model.
2. If you don't know the model number, the description column in the parts list has descriptions of the different part numbers that are used on different models.
 - For service parts contact ArvinMeritor Commercial Vehicle Aftermarket, (888) 725-9355. In Canada, 800-668-3508/option 1.
 - All Meritor gears and shafts are marked with the check letter and final digits of the part number, for example, F-5024 or X-2442.
 - When you service gears, we recommend that you replace all mating gears for the best quality repair.
 - Proper tools and maintenance procedures must be used. For T-226 series transfer cases, use general service instructions from Meritor Field Maintenance Manual 3. Also see Meritor Field Maintenance Manual No. 1 for proper lubricant and change intervals. To order these publications, call Meritor's Customer Service Center at 800-535-5560.
 - Service kits include parts to service all the different models covered by this book so the kit may include extra parts that you won't need. In addition to kits, individual parts are available. All kits and parts are available through Meritor's Florence, KY or Brampton, Ontario distribution centers.

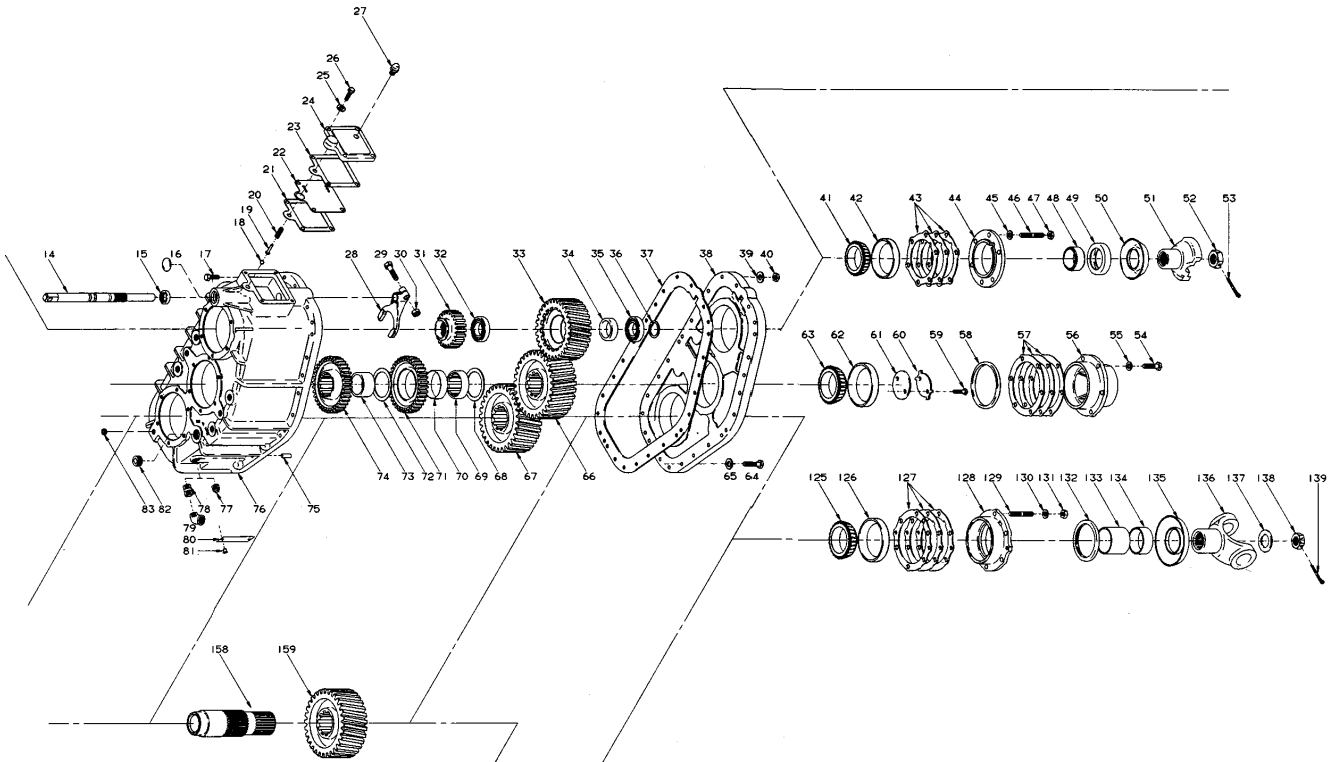
Table of Contents

	Page
T-226 Series Exploded View	2
T-226 Series Supersessions	5
T-226 Series Options	8
T-226 Series Service Kit Reference	11
T-226 Series Easy Service Yokes	14
T-226 Series Service Kits	
Main Case Bearings/Shims/Spacers.....	15
Main Case Fasteners.....	15
Main Case Miscellaneous Parts.....	16
Differential Shims/Bearings.....	16
Differential Fasteners.....	16
Differential Miscellaneous Parts.....	16
Declutch Shims/Bearings.....	17
Declutch Miscellaneous Parts.....	17
DCM 12" x 4" Brake Kit.....	17
DCM 12" x 5" Brake Kit.....	17
DLM 13-3/8" x 2" Brake Kit.....	18
Power Take Off Miscellaneous Parts.....	18
Power Take Off Bearings/Shims.....	18
Piston Lubrication Pump Miscellaneous Parts.....	18
T-226 Series Transfer Case	
Main Case.....	19
Differential.....	49
DCM Brake.....	54
DLM Brake.....	56
Declutch.....	58
Power Take Off.....	63
Piston Lubrication Pump - Case.....	67

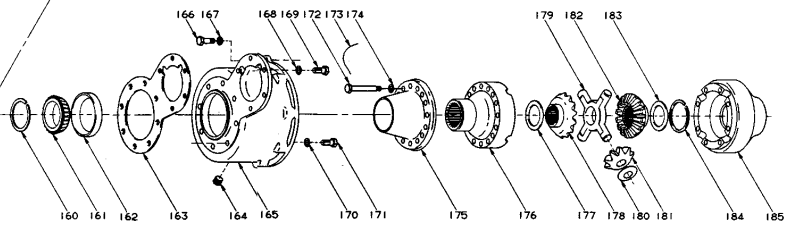
T226 SERIES TRANSFER CASE

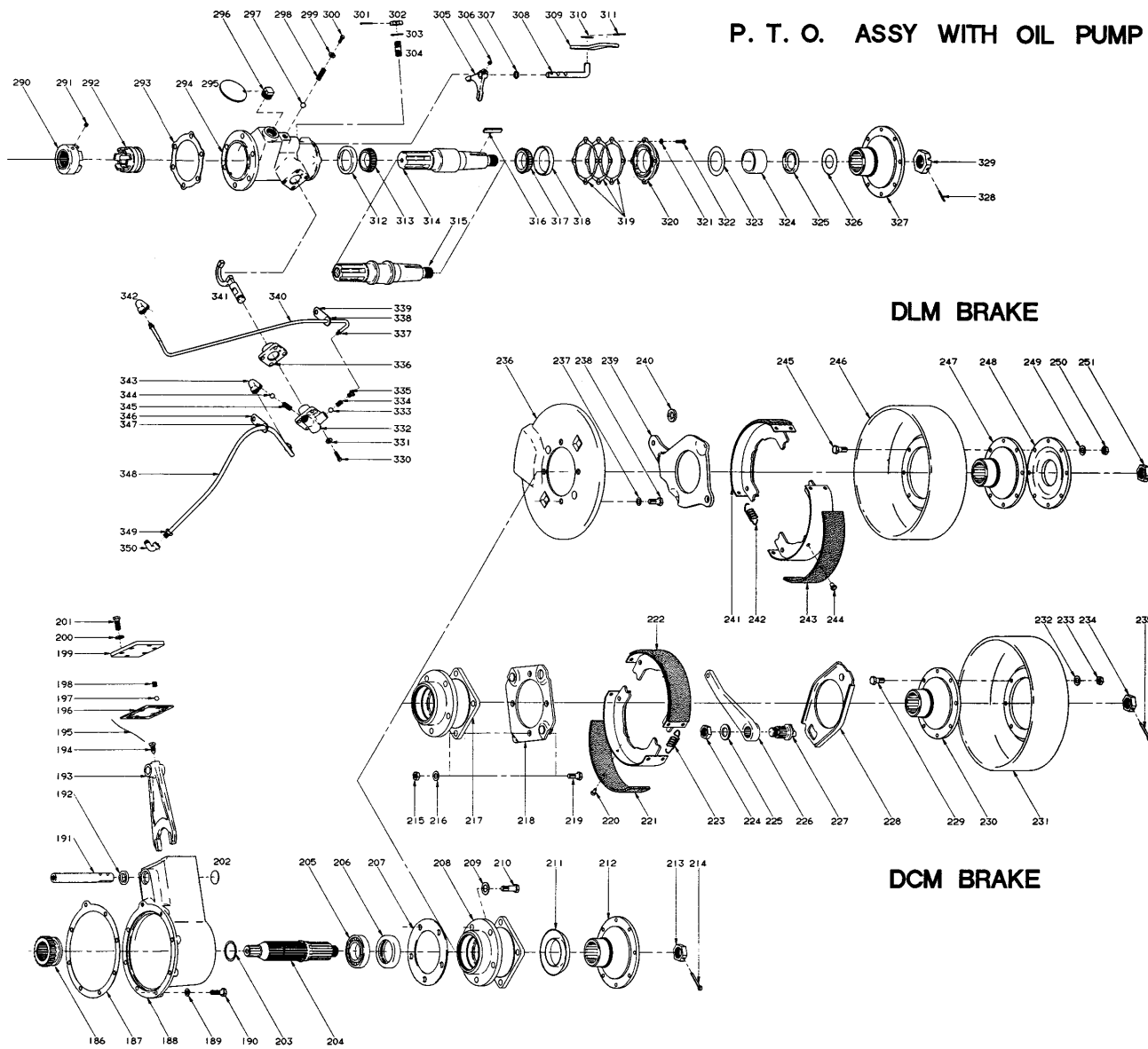
NOTE: PARTS SHOWN ARE NOT USED ON ALL MODELS.





DIFFERENTIAL





T-226 SERIES SUPERSESSIONS

MODEL	RELEASE DATE	REPLACES MODEL	RELEASE DATE	REPLACES MODEL	RELEASE DATE
T-226-26	Apr-63				
T-226-28	May-83				
T-226-41	Apr-64				
T-226-65	Nov-66	T-226-13	Aug-61		
T-226-69	Nov-67				
T-226-80	Jul-69				
T-226-83	Dec-69				
T-226-85	Jul-70				
T-226-86	Oct-70				
T-226-103	May-72				
T-226-118	Apr-74				
T-226-132	Nov-79	T-226-130	Feb-78	T-226-125	Oct-76
T-226-133	Nov-79	T-226-131	Feb-78	T-226-127	Jan-77
T-226-136	Sep-79				
T-226-138	Dec-79				
T-226-139	Nov-79				
T-226-140 #1	Nov-79				
T-226-148	Dec-80	T-226-135	Apr-79		
T-226-149	Dec-80	T-226-144	Feb-78		
T-226-155	Mar-82				
T-226-156	Feb-82				
T-226-159	Apr-82				
T-226-160	Mar-83				
T-226-161	Apr-83				
T-226-163	Jan-85				
T-226-164	Feb-84				
T-226-166	Mar-85				
T-226-167	May-85				
T-226-168	May-85				
T-226-169	Jun-85				
T-226-170 #2	Nov-85				
T-226-171	Mar-86				
T-226-172 #3	May-86				
T-226-173	Jun-86				
T-226-174	Nov-86	T-226-140	Nov-79		
T-226-175	Nov-88				
T-226-176	Mar-89	T-226-172	May-86		
T-226-177	May-90	T-226-170	Nov-85		
T-226-A1	Feb-65	T-226-C12	Nov-68		
T-226-A12	Apr-72				
T-226-A13	Feb-73				
T-226-A16	Jun-75				
T-226-A22	Mar-81				
T-226-A23	Mar-84				
T-226-AB1	Mar-67				
T-226-AB3	Oct-71				
T-226-AB5	Sep-88				
T-226-B28	Apr-63				
T-226-B30	Mar-63				

#1 Obsolete, replaced by T-226-174 released November 1986.

#2 Obsolete, replaced by T-226-177 released May 1990.

#3 Obsolete, replaced by T-226-176 released May 1989.

T-226 SERIES SUPERSESSIONS

MODEL	RELEASE DATE	REPLACES MODEL	RELEASE DATE	REPLACES MODEL	RELEASE DATE
T-226-B48	Apr-65				
T-226-B67 #4	Aug-71				
T-226-B68	Sep-71				
T-226-B70	Jun-73				
T-226-B73	May-77				
T-226-B74	Feb-78				
T-226-B76	Jul-81				
T-226-B77	Apr-87	T-226-B67	Aug-71		
T-226-B78	May-89				
T-226-B79	Aug-90	T-226-B30	Mar-63		
T-226-B80	Aug-90	T-226-B77	Apr-87	T-226-B67	Aug-71
T-226-C3	May-63				
T-226-C17	Nov-79				
T-226-CB4	Apr-64				
T-226-CB9	Apr-68				
T-226-CB12	Jan-86				
T-226-CB13	Sep-90				
T-226-D4	Jun-63				
T-226-D6	Jan-64				
T-226-E7	Mar-63				
T-226-E26	Jun-71				
T-226-E33	May-75				
T-226-E38 #5	Nov-79	T-226-E35	Jul-77		
T-226-E43	Jan-83	T-226-E37	Feb-78		
T-226-E45	Sep-83	T-226-E39	Nov-79	T-226-E36	Jul-77
T-226-E49	Aug-84				
T-226-E50	Jun-86	T-226-E38	Nov-79	T-226-E35	Jul-77
T-226-E51	Jul-88				
T-226-F #6	Oct-61				
T-226-F2	Oct-63				
T-226-F19	Sep-72				
T-226-F20	Apr-73				
T-226-F25	Apr-80				
T-226-F26	Sep-81	T-226-F	Oct-61		
T-226-F31	Mar-84	T-226-F24	Nov-78		
T-226-F32	Aug-85				
T-226-F33	Jan-86				
T-226-F34	Jan-88				
T-226-G	Jun-64				
T-226-G1	Jun-64				
T-226-G3	Jan-66				
T-226-H #7	Sep-61				
T-226- H3 #8	Jan-62				
T-226-HB #9	Sep-61				
T-226- HB1 #10	Aug-61				

- #4 Obsolete, replaced by T-226-B77 released April 1987.
- #5 Obsolete, replaced by T-226-E50 released June 1986.
- #6 Obsolete, replaced by T-226-F26 released September 1981.
- #7 Obsolete, replaced by T-226-L released March 1962.
- #8 Obsolete, replaced by T-226-L4 released May 1962, contact Meritor's specification department.
- #9 Obsolete, replaced by T-266-M released June 1967, contact Meritor's specification department.
- #10 Obsolete, replaced by T-226-L released March 1962, contact Meritor's specification department.

T-226 SERIES SUPERSESSIONS

MODEL	RELEASE DATE	REPLACES MODEL	RELEASE DATE	REPLACES MODEL	RELEASE DATE
T-226-J	Sep-61				
T-226-K4	Mar-63				
T-226-K7	Jun-63	T-226-K2	Mar-62		
T-226-L	Mar-62	T-226-H	Sep-61		
T-226-L1	Mar-62				
T-226-L4 #11	May-62	T-226-H3	Jan-62		
T-226-L8	Mar-63				
T-226-L10	May-63	T-226-L2	Mar-62		
T-226-L19	Nov-64				
T-226-L30	Oct-69				
T-226-L35	Jan-71				
T-226-L37	Jul-73				
T-226-40 #12	Nov-77				
T-226-L42	Aug-79				
T-226-L43	Jun-80				
T-226-L45	Jul-84				
T-226-L46	Aug-84				
T-226-L47	Aug-85				
T-226-L48	Apr-86				
T-226-L49	Feb-87				
T-226-L50	Feb-87				
T-226-L51	Jun-88				
T-226-L52	Jun-88				
T-226-L53	Jan-89				
T-226-L54	Jul-90				
T-226-M	Apr-67	T-226-HB	Sep-61		
T-226-M1	Jun-62				
T-226-M3	Jan-63				
T-226-M4	Jan-67				
T-226-M5	Sep-68	T-226-HB	Aug-61		
T-226-N	Aug-62				
T-226-N1	Aug-62				
T-226-N2	Jun-63				
T-226-P4 #13	Mar-67				
T-226-P7 #14	Jan-68				
T-226-Q	Aug-63				
T-226-Q1	Aug-63				
T-226-Q2	Nov-63	T-226-B26	Nov-62		
T-226-R8	Jul-75				
T-226-R10	Apr-87				
T-226-R11	Aug-88				
T-226-S	Oct-68				
T-226-S1	Oct-68				
T-226-T	Aug-73				
T-226-T1	Aug-73				
T-226-V	Apr-83				
T-226-W	Jun-86				
T-226-X	Jan-89				

#11 Obsolete, replaced by T-226-L9 released March 1963.

#12 Obsolete, contact Meritor's specification department.

#13 Obsolete, contact Meritor's specification department.

#14 Obsolete, contact Meritor's specification department.

T-226 SERIES OPTIONS

MODEL	DIFFERENTIAL	DE-CLUTCH	DCM BRAKE	DLM BRAKE	P.T.O. W/O PUMP	P.T.O. WITH PUMP	PISTON LUBE PUMP	GEAR LUBE PUMP	FLANGE/YOKE				
									SPEEDO GEARS	FRONT IN-PUT	REAR IN-PUT	FRONT OUT-PUT	REAR OUT-PUT
T-226-26		X											
T-226-28		X											
T-226-41		X							X				
T-226-65		X							X				
T-226-69		X											
T-226-80		X								X		X	X
T-226-83		X										X	X
T-226-85		X							X	X		X	X
T-226-86		X											
T-226-103		X				X				X		X	X
T-226-118		X							X	X		X	X
T-226-132		X			X		X		X	X		X	X
T-226-133		X					X		X	X		X	X
T-226-136		X							X	X		X	X
T-226-138		X				X							
T-226-139		X							X	X		X	X
T-226-140		X											
T-226-148		X					X		X	X		X	X
T-226-149		X			X		X		X	X		X	X
T-226-155		X											
T-226-156		X							X	X		X	X
T-226-159		X							X	X		X	X
T-226-160		X							X	X		X	X
T-226-161		X				X			X	X		X	X
T-226-163		X											
T-226-164		X							X	X		X	X
T-226-166		X							X				
T-226-167		X											
T-226-168		X				X			X				
T-226-169		X				X				X		X	X
T-226-170		X											
T-226-171		X				X			X	X		X	X
T-226-172		X					X		X	X		X	X
T-226-173		X				X			X	X		X	X
T-226-174		X											
T-226-175		X							X	X		X	X
T-226-176		X					X		X	X		X	X
T-226-177		X										X	X
T-226-A1													
T-226-A12									X	X		X	X
T-226-A13										X		X	
T-226-A16													
T-226-A22													
T-226-A23								X		X		X	
T-226-AB1				13-3/8" x 2"									
T-226-AB3				13-3/8" x 2"						X		X	
T-226-AB5				13-3/8" x 2"						X		X	
T-226-B28		X		13-3/8" x 2"									
T-226-B30		X		13-3/8" x 2"								X	
T-226-B48		X		13-3/8" x 2"					X	X		X	
T-226-B67		X		13-3/8" x 2"					X	X		X	
T-226-B68		X		13-3/8" x 2"					X	X		X	
T-226-B70		X		13-3/8" x 2"						X		X	

T-226 SERIES OPTIONS

MODEL	DIFFERENTIAL	DE-CLUTCH	DCM BRAKE	DLM BRAKE	P.T.O. W/O PUMP	P.T.O. WITH PUMP	PISTON LUBE PUMP	GEAR LUBE PUMP	FLANGE/YOKE				
									SPEEDO GEARS	FRONT IN-PUT	REAR IN-PUT	FRONT OUT-PUT	REAR OUT-PUT
T-226-B73		X		13-3/8" x 2"					X	X		X	
T-226-B74		X		13-3/8" x 2"					X	X		X	
T-226-B76		X		13-3/8" x 2"					X	X		X	X
T-226-B77		X		13-3/8" x 2"					X	X		X	
T-226-B78		X		13-3/8" x 2"					X	X		X	
T-226-B79		X		13-3/8" x 2"									
T-226-B80		X		13-3/8" x 2"					X	X		X	
T-226-C3													
T-226-C17													
T-226-CB4				13-3/8" x 2"									
T-226-CB9						X			X				
T-226-CB12				13-3/8" x 2"					X	X			
T-226-CB13						X				X			
T-226-D4		X	12" x 4"										
T-226-D6		X	12" x 4"		X				X	X		X	
T-226-E7	X	X											
T-226-E26	X	X											
T-226-E33	X	X							X	X		X	X
T-226-E38	X	X							X	X		X	
T-226-E43	X	X							X	X			
T-226-E45	X	X			X				X	X		X	
T-226-E49	X	X							X	X		X	X
T-226-E50	X	X							X	X		X	
T-226-E51	X	X							X				
T-226-F	X		12" x 5"										
T-226-F2	X												
T-226-F19	X								X	X		X	X
T-226-F20	X		12" x 5"						X	X		X	
T-226-F25	X		12" x 4"						X				
T-226-F26	X		12" x 5"										
T-226-F31	X								X				
T-226-F32	X								X				
T-226-F33	X		12" x 5"						X	X		X	
T-226-F34	X								X	X		X	X
T-226-G		X	12" x 5"										
T-226-G1		X	12" x 5"						X	X		X	
T-226-G3		X	12" x 5"										
T-226-H		X											
T-226-H3		X							X				X
T-226-HB		X		13-3/8" x 2"									
T-226-HB1		X		13-3/8" x 2"					X			X	
T-226-J													
T-226-K4		X	12" x 5"										
T-226-K7		X							X				
T-226-L		X											
T-226-L1		X											
T-226-L4		X							X				
T-226-L8		X											
T-226-L10		X							X				
T-226-L19		X							X				
T-226-L30		X							X	X		X	X
T-226-L35		X							X				
T-226-L37		X			X		X		X	X			

T-226 SERIES OPTIONS

MODEL	DIFFERENTIAL	DE-CLUTCH	DCM BRAKE	DLM BRAKE	P.T.O. W/O PUMP	P.T.O. WITH PUMP	PISTON LUBE PUMP	GEAR LUBE PUMP	FLANGE/YOKE				
									SPEEDO GEARS	FRONT IN-PUT	REAR IN-PUT	FRONT OUT-PUT	REAR OUT-PUT
T-226-L40		X				X			X	X		X	X
T-226-L42		X							X				
T-226-L43		X							X	X		X	X
T-226-L45		X								X		X	X
T-226-L46		X							X	X		X	X
T-226-L47		X							X	X		X	X
T-226-L48		X							X	X		X	X
T-226-L49		X							X				
T-226-L50		X							X	X		X	X
T-226-L51		X							X	X		X	X
T-226-L52		X				X			X	X		X	X
T-226-L53		X							X	X		X	X
T-226-L54		X							X	X		X	X
T-226-M		X		13-3/8" x 2"									
T-226-M1		X		13-3/8" x 2"									
T-226-M3		X		13-3/8" x 2"					X				
T-226-M4		X		13-3/8" x 2"					X	X		X	
T-226-M5		X		13-3/8" x 2"					X	X		X	
T-226-N													
T-226-N1			12" x 5"			X			X				
T-226-N2						X			X				
T-226-P4		X	12" x 4"										
T-226-P7		X	12" x 4"				X		X	X			
T-226-Q		X		13-3/8" x 2"									
T-226-Q1		X		13-3/8" x 2"			X			X		X	X
T-226-Q2		X		13-3/8" x 2"	X		X			X		X	X
T-226-R8		X								X	X	X	
T-226-R10		X							X	X	X	X	X
T-226-R11		X								X		X	X
T-226-S		X											
T-226-S1		X							X	X		X	X
T-226-T													
T-226-T1									X	X			
T-226-V		X							X		X	X	X
T-226-W												X	
T-226-X		X							X				

T-226 SERIES SERVICE KIT REFERENCE

MODEL	KIT T-226- 1	KIT T-226- 2	KIT T-226- 3	KIT T-226- 4	KIT T-226- 5	KIT T-226- 6	KIT T-226- 7	KIT T-226- 8	KIT T-226- 9	KIT T-226- 10	KIT T-226- 11	KIT T-226- 12	KIT T-226- 13	KIT T-226- 14
T-226-26	X	X	X				X	X						
T-226-28	X	X	X				X	X						
T-226-41	X	X	X				X	X						
T-226-65	X	X	X				X	X						
T-226-69	X	X	X				X	X						
T-226-80	X	X	X				X	X						
T-226-83	X	X	X				X	X						
T-226-85	X	X	X				X	X						
T-226-86	X	X	X				X	X						
T-226-103	X	X	X				X	X				X	X	
T-226-118	X	X	X				X	X						
T-226-132	X	X	X				X	X				X	X	X
T-226-133	X	X	X				X	X						X
T-226-136	X	X	X				X	X						
T-226-138	X	X	X				X	X				X	X	
T-226-139	X	X	X				X	X						
T-226-140	X	X	X				X	X						
T-226-148	X	X	X				X	X						
T-226-149	X	X	X				X	X						X
T-226-155	X	X	X				X	X				X	X	X
T-226-155	X	X	X				X	X						
T-226-156	X	X	X				X	X						
T-226-159	X	X	X				X	X						
T-226-160	X	X	X				X	X						
T-226-161	X	X	X				X	X				X	X	
T-226-163	X	X	X				X	X						
T-226-164	X	X	X				X	X						
T-226-166	X	X	X				X	X						
T-226-167	X	X	X				X	X						
T-226-168	X	X	X				X	X				X	X	
T-226-169	X	X	X				X	X				X	X	
T-226-170	X	X	X				X	X						
T-226-171	X	X	X				X	X				X	X	
T-226-172	X	X	X				X	X						X
T-226-173	X	X	X				X	X				X	X	
T-226-174	X	X	X				X	X						
T-226-175	X	X	X				X	X						
T-226-176	X	X	X				X	X						X
T-226-177	X	X	X				X	X						
T-226-A1	X	X	X											
T-226-A12	X	X	X											
T-226-A13	X	X	X											
T-226-A16	X	X	X											
T-226-A22	X	X	X									X	X	
T-226-A23	X	X	X											
T-226-AB1	X	X	X								X			
T-226-AB3	X	X	X								X			
T-226-AB5	X	X	X								X	X	X	
T-226-B28	X	X	X				X	X			X			
T-226-B30	X	X	X				X	X			X			
T-226-B48	X	X	X				X	X			X			
T-226-B67	X	X	X				X	X			X			
T-226-B68	X	X	X				X	X			X			
T-226-B70	X	X	X				X	X			X			

T-226 SERIES SERVICE KIT REFERENCE

MODEL	KIT T-226- 1	KIT T-226- 2	KIT T-226- 3	KIT T-226- 4	KIT T-226- 5	KIT T-226- 6	KIT T-226- 7	KIT T-226- 8	KIT T-226- 9	KIT T-226- 10	KIT T-226- 11	KIT T-226- 12	KIT T-226- 13	KIT T-226- 14
T-226-B73	X	X	X				X	X			X			
T-226-B74	X	X	X				X	X			X			X
T-226-B76	X	X	X				X	X			X			
T-226-B77	X	X	X				X	X			X			
T-226-B78	X	X	X				X	X			X			
T-226-B79	X	X	X				X	X			X			
T-226-B80	X	X	X				X	X			X			
T-226-C3	X	X	X											
T-226-CB4	X	X	X								X			
T-226-CB9	X	X	X									X	X	
T-226-CB12	X	X	X								X			
T-226-CB13	X	X	X									X	X	
T-226-D4	X	X	X				X	X	X					
T-226-D6	X	X	X				X	X	X			X	X	
T-226-E7	X	X	X	X	X	X	X	X						
T-226-E26	X	X	X	X	X	X	X	X						
T-226-E33	X	X	X	X	X	X	X	X						
T-226-E38	X	X	X	X	X	X	X	X						X
T-226-E43	X	X	X	X	X	X	X	X						X
T-226-E45	X	X	X	X	X	X	X	X				X	X	X
T-226-E49	X	X	X	X	X	X	X	X						
T-226-E50	X	X	X	X	X	X	X	X						X
T-226-E51	X	X	X	X	X	X	X	X						
T-226-F	X	X	X	X	X	X								
T-226-F2	X	X	X	X	X	X								
T-226-F19	X	X	X	X	X	X								
T-226-F20	X	X	X	X	X	X								
T-226-F25	X	X	X	X	X	X				X				
T-226-F26	X	X	X	X	X	X					X			
T-226-F31	X	X	X	X	X	X								
T-226-F32	X	X	X	X	X	X								
T-226-F33	X	X	X	X	X	X					X			
T-226-F34	X	X	X	X	X	X								
T-226-G	X	X	X								X			
T-226-G1	X	X	X								X			
T-226-G3	X	X	X								X			
T-226-H	X	X	X											
T-226-H3	X	X	X											
T-226-HB	X	X	X								X			
T-226-HB1	X	X	X								X			
T-226-J	X	X	X											
T-226-K4	X	X	X								X			
T-226-K7	X	X	X											
T-226-L	X	X	X											
T-226-L1	X	X	X											
T-226-L4	X	X	X											
T-226-L8	X	X	X											
T-226-L10	X	X	X											
T-226-L19	X	X	X											
T-226-L30	X	X	X											
T-226-L35	X	X	X											
T-226-L37	X	X	X									X	X	X
T-226-L40	X	X	X									X	X	
T-226-L42	X	X	X											

T-226 SERIES SERVICE KIT REFERENCE

MODEL	KIT T-226- 1	KIT T-226- 2	KIT T-226- 3	KIT T-226- 4	KIT T-226- 5	KIT T-226- 6	KIT T-226- 7	KIT T-226- 8	KIT T-226- 9	KIT T-226- 10	KIT T-226- 11	KIT T-226- 12	KIT T-226- 13	KIT T-226- 14
T-226-L43	X	X	X				X	X						
T-226-L45	X	X	X				X	X						
T-226-L46	X	X	X				X	X						
T-226-L47	X	X	X				X	X						
T-226-L48	X	X	X				X	X						
T-226-L49	X	X	X				X	X						
T-226-L50	X	X	X				X	X						
T-226-L51	X	X	X				X	X						
T-226-L52	X	X	X				X	X				X	X	
T-226-L53	X	X	X				X	X						
T-226-L54	X	X	X				X	X						
T-226-M	X	X	X				X	X			X			
T-226-M1	X	X	X				X	X			X			
T-226-M3	X	X	X				X	X			X			
T-226-M4	X	X	X				X	X			X			
T-226-M5	X	X	X				X	X			X			
T-226-N	X	X	X							X				
T-266-N1	X	X	X									X	X	
T-226-N2	X	X	X									X	X	
T-226-P4	X	X	X				X	X	X					
T-226-P7	X	X	X				X	X	X					X
T-226-Q	X	X	X				X	X			X			
T-226-Q1	X	X	X				X	X			X			X
T-226-Q2	X	X	X				X	X			X	X	X	X
T-226-R8	X	X	X				X	X						
T-226-R10	X	X	X				X	X						
T-226-R11	X	X	X				X	X						
T-226-S	X	X	X				X	X						
T-226-S1	X	X	X				X	X						
T-226-T	X	X	X											
T-226-T1	X	X	X											
T-226-V	X	X	X				X	X						
T-226-W	X	X	X											
T-226-X	X	X	X				X	X						

T-226 SERIES EASY SERVICE YOKES

NOTE: An "A" prefix to a yoke part number indicates that a deflector is included with the yoke.
Different prefixes (A1-, A2-, etc.) indicates different deflectors are installed on the same yoke.

SPLINE SIZE	SERIES	U JOINT CENTERLINE TO END HUB (length)	FULL ROUND PART NUMBER	ITEM NUMBER (1)	EASY SERVICE PART NUMBER
2.0"- 10	16	5.0"	3280-D-1980		3260-E-1435
2.0"- 10	16	5.0"	A-3280-D-1980	3, 254	A-3260-E-1435
2.0"- 10	17	5.0"			3260-Z-1430
2.0"- 10	16	5.6"			3260-A-1431
2.0"- 10	17	5.6"	3897-Y-675		17TYS32-10
2.0"- 10	17	5.6"			3260-C-1433
2.0"- 10	18	5.8"	3280-P-6490		3260-D-1434

(1) Refer to item number for physical description.

T-226 SERIES SERVICE KITS

KIT T-226-1

MAIN CASE BEARINGS/SHIMS/SPACERS

PART NAME	PART NUMBER	QTY	ITEM NUMBER ON EXPLODED VIEW
Cup-main shaft front bearing, driven shaft rear bearing	59412	2	11, 126
Cone-main shaft front bearing, driven shaft rear bearing	59201	2	12, 125
Cup-main shaft rear bearing	3782	1	41
Cone-main shaft rear bearing	3732	1	42
Cone-idler shaft front bearing	3767	1	86
Cup-idler shaft front bearing	3732	1	87
Cup-driven shaft front bearing	33472	1	121
Cone-driven shaft front bearing	33225	1	122
Bearing-direct driving gear idler	1228-C-3	2	32, 35
Spacer-main shaft inner bearing	1844-F-422	1	34
Spacer-main shaft outer bearing	1844-N-534	1	36
Spacer-idler shaft gear	1844-R-70	1	73
Shim-main shaft bearing cap (0.003")	2803-P-562	4	43
Shim-main shaft bearing cap (0.005")	2803-Q-563	4	43
Shim-main shaft bearing cap (0.010")	2803-R-564	4	43
Shim-main shaft bearing cap (0.020")	2803-T-722	4	43
Shim-idler and driven shaft bearing cap (0.003")	2803-G-533	8	57, 127
Shim-idler and driven shaft bearing cap (0.005")	2803-H-554	8	57, 127
Shim-idler and driven shaft bearing cap (0.010")	2803-J-556	8	57, 127
Shim-idler and driven shaft bearing cap (0.020")	2803-S-721	6	57, 127
Oil Seal-transfer shift shaft	A-1805-Z-26	1	15

KIT T-226-2

MAIN CASE FASTENERS

PART NAME	PART NUMBER	QTY	ITEM NUMBER ON EXPLODED VIEW
Capscrew-main shaft front bearing cap, idler shaft rear bearing cover, idler shaft front bearing	S-279-2	15	6, 54, 94
Lockwasher-main shaft front bearing cap, idler shaft rear bearing cover, idler shaft front bearing, driven shaft rear bearing cage	WALM7-2	23	7, 55, 93, 130
Bolt-transfer case and cover	S-1616-2	20	17
Lockwasher-transfer case shift cover, transfer case and cover	WA-16	27	25, 39, 65
Capscrew-transfer case shift cover	S-268-2	4	26
Locknut-shift fork clamp bolt	NL-16-1	1	30
Nut-transfer case and cover	N-16-1	20	40
Capscrew-idler shaft bearing lock	S-278-2	2	59
Washer-idler shaft rear lock	1829-F-370	1	61
Capscrew-transfer case and cover	S-2612-2	3	64
Taper pin-transfer case cover	1846-N-352	4	75
Capscrew-idler shaft front bearing	S-278-2	2	94
Nut-driven shaft rear bearing cage	N-17-1	6	131
Stud-driven shaft rear bearing cage	SN-714-1	6	129

T-226 SERIES SERVICE KITS

KIT T-226-3

MAIN CASE MISCELLANEOUS PARTS

PART NAME	PART NUMBER	QTY	ITEM NUMBER ON EXPLODED VIEW
Bushing-speedo driven gear	1119-M-1105	1	104
Bushing-declutch shaft pilot	1825-E-57	1	123

KIT T-226-4

DIFFERENTIAL SHIMS/BEARINGS

PART NAME	PART NUMBER	QTY	ITEM NUMBER ON EXPLODED VIEW
Bearing-rear output shaft, front output shaft	1228-V-204	2	147, 205
Cup-differential output shaft rear bearing	42620	1	162
Cone-differential output shaft rear bearing	42688	1	161
Cup-differential output shaft front bearing	33472	1	156
Cone-differential output shaft front bearing	33287	1	157
Shim-differential output front (0.003")	2803-G-553	4	153
Shim-differential output front (0.005")	2803-H-554	4	153
Shim-differential output front (0.010")	2803-J-556	4	153
Oil Seal-differential lock shift shaft	A-1805-S-279	1	192

KIT T-226-5

DIFFERENTIAL FASTENERS

PART NAME	PART NUMBER	QTY	ITEM NUMBER ON EXPLODED VIEW
Screw-differential lock shift fork lock	26-X-96	1	194
Capscrew-differential lock shift cover	S-267-2	6	201
Lockwasher-differential lock shift cover	WA-16	6	200
Capscrew-differential housing cover	S-2714-2	7	190
Lockwasher-differential housing, housing to case, housing cover	WALM7-2	13	167, 168, 189
Washer-differential pinion	1229-R-1032	4	180
Washer-differential side gear	1229-T-1034	2	177, 183
Washer-differential case bolt	1229-C-1511	12	174
Bolt-differential case	S-1827-D2	12	172
Capscrew-differential housing to case, housing cover	S-2710-2	6	166, 169
Capscrew-differential housing to case	S-2813-2	8	171
Lockwasher-differential housing to case	WA-18	8	170

KIT T-226-6

DIFFERENTIAL MISCELLANEOUS PARTS

PART NAME	PART NUMBER	QTY	ITEM NUMBER ON EXPLODED VIEW
Spring-differential lock shift lock	2858-A-1	1	198
Ball-differential lock shift lock	1898-E-57	1	197
Snap Ring-output shaft rear bearing cage, output shaft front bearing cage	1854-C-315	3	146, 151, 203
Snap Ring-differential side gear retainer, output shaft front bearing	1854-W-257	2	154, 184
Snap Ring-differential output gear inner lock	1854-E-317	1	160

T-226 SERIES SERVICE KITS

KIT T-226-7

DECLUTCH SHIMS/BEARINGS

PART NAME	PART NUMBER	QTY	ITEM NUMBER ON EXPLODED VIEW
Cup-declutch shaft bearing	382-A	2	285, 264
Cone-declutch shaft bearing	385-A	2	257, 265
Shim-declutch spacer shaft bearing (0.163")	2803-G-1827	1	259
Shim-declutch spacer shaft bearing (0.167")	2803-F-1826	1	259
Shim-declutch spacer shaft bearing (0.171")	2803-E-1825	1	259
Shim-declutch spacer shaft bearing (0.175")	2803-D-1824	1	259
Shim-declutch spacer shaft bearing (0.179")	2803-N-560	1	259
Shim-declutch spacer shaft bearing (0.184")	2803-M-559	1	259
Shim-declutch spacer shaft bearing (0.189")	2803-L-558	1	259
Shim-declutch spacer shaft bearing (0.194")	2803-K-557	1	259
Shim-declutch spacer shaft bearing (0.197")	2803-P-640	1	259
Shim-declutch spacer shaft bearing (0.204")	2803-Q-641	1	259

KIT T-226-8

DECLUTCH MISCELLANEOUS PARTS

PART NAME	PART NUMBER	QTY	ITEM NUMBER ON EXPLODED VIEW
Nut-declutch carrier cap	N-16-1	5	261
Lockwasher-declutch carrier cap	WA-16	5	262
Stud-declutch carrier cap	4-X-320	5	267
Ball-declutch shift lock	1228-K-37	1	279
Spring-declutch shift lock	2858-S-45	1	280
Lockwasher-declutch shaft screw	1229-F-422	1	281
Screw-declutch shift lock spring	S-174-A2	1	282
Nut-declutch carrier to case	N-17-1	6	276
Lockwasher-declutch carrier to case	WALM7-2	6	277
Screw-declutch shift fork	26-X-52	1	285
Screw-declutch drive clutch lock	S-865	1	288

KIT T-226-9

DCM 12" X 4" BRAKE KIT

PART NAME	PART NUMBER	QTY	ITEM NUMBER ON EXPLODED VIEW
Nut-brake assy. to cage bolt	N-110-1	4	215
Lockwasher-brake assy. bolt	WA-110	4	216
Brake Shoe and Lining Assy.*	A3-3722-E-421	2	222
Spring-return	2758-A-53	4	223
Bolt-brake drum to flange	10-X-507Z	8	229
Lockwasher-brake drum to flange	WA-16	8	232
Nut-brake drum to flange	N-16-1	8	233

KIT T-266-10

DCM 12" X 5" BRAKE KIT

PART NAME	PART NUMBER	QTY	ITEM NUMBER ON EXPLODED VIEW
Nut-brake assy. to cage bolt	N-110-1	4	215
Lockwasher-brake assy. bolt	WA-110	4	216
Brake Shoe and Lining Assy.*	A2-3722-F-422	2	222
Spring-return	2758-A-53	4	223
Bolt-brake drum to flange	10-X-507Z	8	229
Lockwasher-brake drum to flange	WA-16	8	232
Nut-brake drum to flange	N-16-1	8	233

T-226 SERIES SERVICE KITS

KIT T-226-11

DLM 13-3/8" X 2" BRAKE KIT

PART NAME	PART NUMBER	QTY	ITEM NUMBER ON EXPLODED VIEW
Lockwasher-brake assy. to cage	WALM7-2	8	237
Capscrew-brake to case	S-278-2	8	238
Roller-brake	1779-P-68	1	240
Spring-return	2758-S-19	2	242
Brake Shoe and Lining Assy.*	A8-3722-X-180	2	241

* Lining and rivets available separately in Kit 2000-R-1370.

KIT T-226-12

POWER TAKE OFF MISC. PARTS

PART NAME	PART NUMBER	QTY	ITEM NUMBER ON EXPLODED VIEW
Ball-shift shaft lock	1898-H-34	1	297
Spring-shift shaft lock	2858-T-20	1	298
Washer-declutch shift spring screw	1229-E-421	1	299
Screw-shift shaft lock screw	3-X-161	1	300
Cotter-shift shaft nut, lever stud nut	K-236	2	301, 311
Nut-shift lever stud	NL-28-1	1	302
Washer-shift lever stud	WA-38	1	303
Screw-shift fork lock	26-X-56	1	306
Washer-shift lever	1829-V-386	1	310
Lockwasher-carrier cap	WA-15Z	4	321
Capscrew-carrier cap	S-256-2	4	322
Nut-P.T.O. shaft	1227-L-714	1	329
Cotter-P.T.O. shaft nut	K-2412	1	328

KIT T-226-13

POWER TAKE OFF BEARINGS/SHIMS

PART NAME	PART NUMBER	QTY	ITEM NUMBER ON EXPLODED VIEW
Cup-P.T.O. bearing	332	2	312, 318
Cone-P.T.O. bearing	342-S	2	313, 317
Shim-P.T.O. bearing cap (0.003")	2803-L-220	3	319
Shim-P.T.O. bearing cap (0.005")	2803-M-221	2	319
Shim-P.T.O. bearing cap (0.010")	2803-N-222	2	319
Shim-P.T.O. bearing cap (0.010")	2803-R-564	3	319
Oil Seal-shift fork	A-1805-Y-415	1	307

KIT T-226-14

PISTON LUBRICATION PUMP MISC. PART

PART NAME	PART NUMBER	QTY	ITEM NUMBER ON EXPLODED VIEW
Nut-oil pump output tube fitting	1898-J-504	2	363, 370
Spring-oil pump check valve ball	2858-X-102	2	355, 360
Ball-oil pump check valve	1228-K-37	2	356, 361
Lockwasher-oil pump to case capscrew	WA-15Z	4	367
Capscrew-oil pump to case	S-251-2	4	368
Nut-intake to pump fitting	1898-G-241	1	353

T-226 SERIES MAIN CASE

Item	Part Name	Model	Qty	Part Number	Description
1	Cotter-main shaft nut	H, H3, HB, HB1 J, L1, L4, M, M1, M3, N1, R8, R10, R11, S1	1	K-2416	0.13" diameter, 2.0" long.
2	Locknut-main shaft input	H, H3, HB, HB1, J, L1, L4, M1, M3, N1, R8, R10, R11, S1	1	1227-B-1496	1.25"- 18, 0.62" high, 6 slots, 2.12" across flats, grade 8.
		E45, E49	-	Part not used	
		All others	1	1227-Z-936	1.25"- 18, 0.62" high, 1.6" across flats.
3	Flange/Yoke-main shaft	80, 103, A23, AB5, B73, F19	1	16NYS32-26A	1600 flange, 3.63" end hub to flange face, 2.0"- 10T spline, 8 holes 0.38" diameter equal spaced on 6.12" bolt circle diameter, includes item 4 assembled 1.91" from hub end.
		118, 136, 159, 175, A12, D6, L43, L50, L53	1	A-3280-D-1980	16N yoke, 5.0" end hub to center cross assy., 2.0"- 10T spline, includes item 4 assembled.
		85, A13, G1, M5	1	A3260-Q-1395	7C yoke, 4.25" end hub to flange mounting face, 2.0"- 10T spline, 4 holes 0.47" diameter in ears, includes item 4 assembled 2.06" from hub end.
		139, 164, 171, CB12, E33, F33, F34, L40, L46, L47, L48, L51, L52, R11, T1	1	A-3897-Y-675	17 Series yoke, 5.63" end hub to center cross assy., 2.0"- 10T spline, includes item 4 assembled.
		132, 133, 148, 149, 172, 176, E38, , E45, E50	1	3260-P-94	5 WCS flange, 4.25" end hub to flange face, 2.0"- 10T spline, 8 holes 0.4" diameter equal spaced on 7.25" bolt circle diameter.
		156, 161, B76	1	A-3260-U-177	58 WBYS, 4.31" end hub to center cross assy., 2.0"- 10 t spline, 4 holes 0.44"- 20, item 4 assembled.
		160	1	A1-3280-C-3201	72N yoke, 4.25" end hub to center cross assy., 2.0"- 10T spline, 4 holes 0.5"- 20, includes item 4 (tack welded at yoke shoulder).
		169, 173, B67, B68, B77, B80, CB13, F20	1	A1-3897-S-331	1550 flange, 4.63" end hub to flange face, 2.0"- 10T spline, 4 holes 0.51" diameter on 4.75" bolt circle diameter, includes item 4.
		AB3, L30, R8	1	A-3280-C-3201	Same as A1-3280-C-3201 except item 4 welded 1.81" from hub end.
		B48, B70, E49	1	A1-3897-P-692	16N yoke, 5.63" end hub to center cross assy., 2.0"- 10T spline, includes item 4.
		B74, E43, L37, P7	1	3897-U-1841	1700 flange, 5.88" end hub to flange mounting face, 2.0"- 10T spline 8 holes 0.38" diameter equal spaced on 7.25" bolt circle diameter.
		B78	1	17N-4-2191	17N yoke, 5.63" end hub to center cross assy., 2.0"- 10T spline, includes item 4 assembled.
		L45, S1	1	A-3897-S-357	17 series yoke, 5.06" end hub to center cross assy., 2.0"- 10T spline, includes item 4 assembled 1.72" from end hub.
		L54	1	155DYS32-6A	62N yoke, 4.25" end hub to center cross assy., 2.0"- 10T spline, 4 holes 0.38"- 24, in yoke ears, includes item 4.

(Continued)

T-226 SERIES MAIN CASE

Item	Part Name	Model	Qty	Part Number	Description
3	Flange/Yoke-main shaft	M4	1	A-3897-F-318	1710 flange, 3.69" end hub to center cross assy., 2.0"- 10T spline, 8 holes 0.38" diameter equal spaced on 7.25" bolt circle diameter, includes item 4.
		Q1, Q2	1	3897-X-2234	7C yoke, 4.25" end hub to center cross assy., 2.0"- 10T spline, 4 holes 0.47" diameter in ears.
4	Deflector-main shaft front	80, 85, 103, 118, 136, 139, 156, 159, 160, 161, 164, 169, 171, 173, 175, A12, A13, A23, AB5, B70, B73, B76, B77, B78, B80, CB12, CB13, D6, E33, E28, E45, E49, E50, F19, F20, F33, F34, G1, L30, L40, L43, L45, L46, L47, L48, L50, L51, L52, L53, L54, M4, M5, R8, R11, S1, T1	1	2847-Z-312	4.81" O.D., 2.95" I.D., 0.81" long, 0.05" thick.
5	Oil Seal-main shaft	V	-	Part not used	
		132, 133, 148, 149, 172, 176, B74, E38, E43, E45, E50, L37, P7, Q1, Q2	1	A-1805-X-466	4.25" O.D., 3.1" I.D., 0.53" wide, single lip with spring, single case design.
		All others	1	A-1205-U-1529	4.0" O.D., 2.94" I.D., 0.45" wide, single lip with spring and dirt lip, replaces A-1805-V-152, (0.63" wide, 2.03" shaft I.D.)
6	Capscrew-main shaft front bearing cap	T, T1	6	S-2710-2	0.44"- 14, 1.25" long, 0.62" across flats, grade 8.
		All others	6	S-279-2	0.44"- 14, 1.12" long, 0.62" across flats, grade 8.
7	Lockwasher-main shaft front bearing cap	All	6	WALM7-2	0.77" O.D., 0.46" I.D., 0.11" thick.
8	Plug-main shaft front bearing cap	155, L49, X	1	P-42	Hex socket, female, 0.27" long, 0.13"- 27 N.P.T.F. thread, non-magnetic.
9	Cap-main drive shaft front bearing	103, 138, 155, 161, 168, 169, 171, 173, A22, AB5, CB9, CB13, L40, L49, L52, N1, N2, X	1	A-3838-T-202	Same as A-3838-Y-77 except add 0.13"- 27 N.P.S.F. one hole 2.63" from center bearing cage, includes items 5 (U-15929) and 8.
		V	1	A-3266-Z-936	3266-Y-935 casting, 6.38" O.D., 4.18" I.D., 1.88" high, includes item 8.
		All others	1	A-3838-Y-77	3838-G-293 casting, 6.13" O.D., 3.63" I.D., 1.94" high, 6 holes 0.47" diameter on 5.5" bolt circle diameter and 2 holes 0.38"- 16 on 5.88" bolt circle diameter, includes items 5 (U-1529) and 8.
10	Gasket-main shaft cap	All	-	2297-A-7021	Silicone Gasket, use as required.*
11	Cup-main shaft front bearing	All	1	59412	4.13" O.D.
12	Cone-main shaft front bearing	All	1	59201	2.0" bore.
13	Shaft-main drive	139, 140, 148, 149, 159, 172, 174, C17, L42, M4	1	A-3880-U-957	14.86" long 3 splines, 1 spline 2.0"- 10T, 2.94" long, 1 spline 2.25"- 10T, 5.33" long, 1 spline 1.75"- 6T, 0.81" long, 1.25"- 18 thread one end, includes item 2 (Z-936), replaces 3880-U-957, (without item 2).
	(Continued)				

* All preformed gaskets are replaced with silicone liquid gasket at time of service.

T-226 SERIES MAIN CASE

Item	Part Name	Model	Qty	Part Number	Description
13	Shaft-main drive	H, H3, HB, HB1 J	1	3880-E-291	14.86" long, 4 splines, 1 spline 1.75"-6T, 0.81" long, 1 spline 2.25"- 10T, 1.84" long, 1 spline 2.0"- 10T, 2.48" long, 1 spline 2.0"- 10T, 2.94" long, 1 end has 0.16" diameter, 2 holes in 1.25"- 18 thread.
		L1, L4, M1, M3, N1	1	3880-H-866	Same as E-291 except 2.25"- 10T spline 2.4" long.
		R8, R10, R11	1	3880-F-1358	18.67" long, 3 splines, 2 splines are 2.0"- 10T, 2.94" long, 1 spline 2.51"- 10T, 2.66" long, both ends have 2 holes 0.16" diameter in 1.25"- 18 thread.
		S1	1	3880-Z-1092	14.86" long, 6 splines, 1 spline 1.75"- 16T, 0.69" long, 4 splines 2.25"- 17T, total length 5.33", thin/thick/thin, 1 spline 2.0"- 10T, 2.94" long, 1 end has 1.25"- 18 thread.
		V	1	3297-Q-147	13.38" long, 1 spline 1.75"- 10T, 2.25" long, thin/thick/thin, 1 spline 2.25"- 17T, 5.33" overall 3 splines, 1.25"- 18 thread 1 end.
		W	1	A-3297-K-1025	Same as L-922 except sharp corners thick splines broke both ends.
		All others	1	A-3880-L-922	14.86" long, 5 splines, 1 spline 2.0"- 10T, 2.94" long, 2.25"- 17T thin/thick/thin spline, total spline length 3 splines equal 5.33", 1 spline 1.75"- 6T, 0.81" long, induction harden 6.4" over thin/thick/thin spline.
14	Shaft-transfer gear shift	132, 133, 148, 149, 172, 176, E38, E45, E50, E51, F32	1	2244-B-28	Same as 2843-E-57 except add chrome plating on O.D., 4.97" long at 0.5" diameter hole end.
		S1	1	2843-Y-545	2 detent grooves back to back with center at 8.0" from end opposite 0.5" diameter hole.
		R8, R10, R11	-	Part not used	
		All others	1	2843-E-57	2 detent radii (0.22") back to back 0.20" long body diameter at 8.0" from end opposite 0.5" diameter hole.
15	Oil Seal-transfer shift shaft	R8, R10, R11	-	Part not used	
		All others	1	A-1805-Z-26	1.25" O.D., 0.88" I.D., single lip, no spring.
16	Expansion Plug-shift shaft hole	R8, R10, R11	1	PW-220	1.25" O.D., 0.08" thick.
17	Bolt-transfer case and cover	All	20	S-1616-2	0.38"- 24, 2.0" long, 0.56" across flats, grade 8.
18	Ball-transfer gear shift lock	R8, R10, R11	-	Part not used	
		All others	1	1898-E-57	0.44" diameter ball.
19	Plunger-transfer shift lock	132, 133, 148, 149, E38, E45, E50, E51, F32	1	2297-Y-4081	1.56" long, 0.28" body diameter, 0.43" diameter head.
		R8, R10, R11	-	Part not used	
		All others	1	1846-B-2	0.88" long, 0.02" diameter, indent in head to fit 0.44" ball.
20	Spring-transfer gear shift lock	132, 133, E38, E45, E50, E51, F32	1	2258-D-706	1.38" free length, 0.43" O.D., 8 active coils.
		140, 174, L43, L53, V	1	2858-D-82	1.5" free length, 0.44" O.D., replaces 2258-M-1001, (1.25" free length).
		148, 149	1	2258-U-671	1.75" long, 0.44" O.D., 12 coils.
		S1	1	2858-B-262	2.2" free length, 0.44" O.D., 15 active coils.
		R8, R10, R11	-	Part not used	
All others	1	2858-A-1	1.88" free length, 0.44" O.D., 13 coils.		

T-226 SERIES MAIN CASE

Item	Part Name	Model	Qty	Part Number	Description
21	Gasket-transfer shift cover	All	-	2297-A-7021	Silicone gasket, use as required.*
22	Plate-transfer gear case breather	All	1	2847-B-106	4.19" x 4.5" x 0.03" thick, 4 holes 0.41" diameter, 1 hole 0.84" diameter, 6 holes 0.19" diameter.
23	Gasket-transfer shift cover	All	-	2297-A-7021	Silicone Gasket, use as required.*
24	Cover-transfer gear shift	132, 133, 148, 149, E38, E45, E50, E51, F32	1	3266-X-830	3266-W-829 casting, 4.0" x 4.5" with 4 holes 0.41" diameter, 1 hole 0.13"- 27 N.P.S.F. is above 0.45" diameter hole horizontal centerline, and 1 hole M16 x 2.
		R8, R10, R11, V	1	3855-U-73	3855-G-449 casting, 4.0" x 4.5" with 4 holes 0.41" diameter, 1 hole 0.13"- 27 N.P.S.F. and 1 hole 0.45" diameter no thru.
		S1	1	3855-X-414	3855-W-413 casting, 4.19" x 4.50" with 4 holes 0.41" diameter, 1 hole 0.45"
		All others	1	3855-H-60	Same as 3855-U-73 except 1 hole 0.13"- 27 N.P.S.F. is moved to below 0.45" diameter hole horizontal centerline.
25	Lockwasher-transfer case shift cover	All	4	WA-16	0.67" O.D., 0.32" I.D., 0.09" thick.
26	Capscrew-transfer case shift cover	132, 133, 148, 149, 172, 176, E38, E45, E50, E51, F32	4	S-269-2	0.38"- 16, 1.12" long, 0.56" across flats, grade 8.
		All others	4	S-268-2	0.38"- 16, 1.0" long, 0.56" across flats, grade 8.
27	Breather Assy.	V	1	1199-A-2731	0.81" long with 0.13"- 27 N.P.T.F. replaces A-1199-J-166, (1.0" high).
		All others	1	A-1199-C-1043	1.06" long, with 0.13"- 27 N.P.S.F.
28	Fork-transfer gear shift	139, 140, 148, 149, 172, 174, H, H3, HB, HB1, J, L1, L4, M1, M3, M4, N1,	1	2849-N-14	2848-M-13 forging, 2.69" between fork jaws.
		R8, R10, R11	-	Part not used	
		All others	1	2849-R-96	2848-M13 forging, 2.81" between fork jaws.
29	Bolt-transfer shift fork clamp	R8, R10, R11	-	Part not used	
		All others	1	S-1614-2	0.38"- 24, 1.75" long, 0.56" across flats, grade 8.
30	Locknut-shift fork clamp bolt	R8, R10, R11	-	Part not used	
		All others	1	NL-16-1	0.38"- 24, 0.33" high, 0.56" across flats, grade 8.
31	Gear-sliding (1.62-1)	26, 28, 41, 65, 69, 80, 83, 85, 86, 103, 118, 136, 138, 139, 140, 155, 156, 159, 160, 161, 163, 164, 166, 167, 168, 169, 170, 171, 173, 174, 175, 177, A1, A12, A13, A16, A22, A23, AB1, AB3, AB5, B28, B30, B48, B67, B68, B70, B73, B74, B76, B77, B78, B79, B80, C3, C17, CB4, CB9, CB12, CB13, D4, D6, E26, E33, F2, F19, G, G1, G3, Q, Q1, Q2	1	3892-S-2437	24T, spur, 5.08" O.D., with 17T internal spline which has 2.0" shift groove.

(Continued)

* All preformed gaskets are replaced with silicone liquid gasket at time of service.

T-226 SERIES MAIN CASE

Item	Part Name	Model	Qty	Part Number	Description
31	Gear-sliding (2.68-1)	26, 28, 41, 65, 69, 80, 83, 85, 86, 103, 118, 136, 138, 139, 155, 156, 159, 160, 161, 163, 164, 166, 167, 168, 169, 170, 171, 173, 175, 177, A1, A12, A13, A16, A22, A23, AB1, AB3, AB5, B28, B30, B48, B67, B68, B70, B73, B74, B76, B77, B78, B79, B80, C3, CB4, CB9, CB12, CB13, D4, D6, G, G1, G3, Q, Q1, Q2	1	3892-N-2432	3891-B-574 forging, 17T, spur, 3.68" O.D., with 17T internal spline which has 2.0" minor diameter, includes external shift groove.
	Gear-sliding (1.62-1)	148, 149, 172	1	3892-D-628	24T, spur, 5.09" O.D., with 10T internal spline which has 2.25" major diameter, includes external shift groove.
	Gear-sliding (1.62-1)	W	1	3892-B-4942	24T, spur, 5.08" O.D., with 17T internal spline which has 2.0" minor diameter, includes external shift groove.
	Gear-sliding (1.85-1)	26, 28, 41, 65, 69, 80, 83, 85, 86, 103, 118, 136, 138, 139, 140, 155, 156, 159, 160, 161, 163, 164, 166, 167, 168, 169, 170, 171, 173, 174, 175, 177, A1, A12, A13, A16, A22, A23, AB1, AB3, AB5, B28, B30, B48, B67, B68, B70, B73, B74, B76, B77, B78, B79, B80, C3, C17, CB4, CB9, CB12, CB13, D4, D6, E26, E33, F2, F19, G, G1, G3, Q, Q1, Q2	1	3892-R-2436	22T, spur, 4.68" O.D., with 17T internal spline which has 2.0" minor diameter, includes external shift groove.
	Gear-sliding (1.98-1)	26, 28, 41, 65, 69, 80, 83, 85, 86, 103, 118, 136, 138, 140, 155, 156, 159, 160, 161, 163, 164, 166, 167, 168, 169, 170, 171, 173, 174, 175, 177, A1, A12, A13, A16, A22, A23, AB1, AB3, AB5, B28, B30, B48, B67, B68, B70, B73, B74, B76, B77, B78, B79, B80, C3, C17, CB4, CB9, CB12, CB13, D4, D6, F2, F19, G, G1, G3, Q, Q1, Q2, V	1	3892-Q-2435	21T, spur, 4.48" O.D., with 17T internal spline which has 2.0" minor diameter, includes external shift groove.
	(Continued)				

T-226 SERIES MAIN CASE

Item	Part Name	Model	Qty	Part Number	Description
31	Gear-sliding (1.98-1)	139	1	3892-R-538	21T, spur, 4.48" O.D., with 10T internal spline which has 2.25" major diameter, includes external shift groove.
	Gear-sliding (1.98-1)	H, H3, HB, HB1, J, M4	1	3892-S-2125	3892-C-3409 forging, 2.63" overall length, 15T, spur, 4.19" O.D., with 10T internal spline which has 2.25" major diameter, includes external shift groove.
	Gear-sliding (1.99-1)	132, 133, 167, 176, E7, E38, E43, E45, E49, E50, E51, F, F20, F25, F26, F31, F32, F33, F34, K4, K7, L, L8, L10, L19, L30, L35, L37, L40, L42, L43, L45, L46, L47, L48, L49, L50, L51, L52, L53, L54, M, M5, N, N2, P4, P7, S, S1, T, T1, X	1	3892-M-2431	3892-C-3409 forging, 17T, spur, 4.66" O.D., with 17T internal spline which has 2.0" minor diameter, includes external shift groove.
	Gear-sliding (1.99-1)	H, H3, HB, HB1, J	1	3892-P-2122	3892-C-3409 forging, 2.63" overall length, 17T, spur, 4.66" O.D., with 10T internal spline which has 2.25" major diameter, includes external shift groove. Part no longer available.
	Gear-sliding (1.99-1)	L1, L4, M1, M3, M4	1	3892-A-2133	3892-C-3409 forging, 2.72" overall length 17T, spur, 4.66" O.D., with 10T internal spline which has 2.25" major diameter, includes external shift groove.
	Gear-sliding (2.18-1)	E7, E43, E49, F, F20, F25, F26, F31, F33, F34, K4, K7, L, L8, L10, L19, L30, L35, L37, L40, L42, L43, L45, L46, L47, L48, L49, L50, L51, L52, L53, L54, M, M5, N, N2, P4, P7, S, S1, T, T1	1	3892-L-2430	3892-C3409 forging, 16T, spur, 4.43" O.D., with 17T internal spline which has 2.0" minor diameter, includes external shift groove.
	Gear-sliding (2.39-1)	E7, E43, E49, F, F20, F25, F26, F31, F33, F34, K4, K7, L, L8, L10, L19, L30, L35, L37, L40, L43, L45, L46, L47, L48, L49, L50, L51 L52, L53, L54, M M5, N, N2, P4, P7 S, S1, T, T1	1	3892-H-2426	3892-C-3409 forging, 15T, spur, 4.2" O.D., with 17T internal spline which has 2.0" minor diameter, includes external shift groove.
	Gear sliding (2.39-1)	L1, L4, L42, M1, M3, N1	1	3892-B-2134	3892-C-3409 forging, 2.72" overall length, 15T, spur, 4.19" O.D., with 10T internal spline which has 2.25" major diameter, includes external shift groove.
	(Continued)				

T-226 SERIES MAIN CASE

Item	Part Name	Model	Qty	Part Number	Description
31	Gear-sliding (2.48-1)	26, 28, 41, 65, 69, 80, 83, 85, 86, 103, 118, 136, 138, 139, 140, 155, 156, 159, 160, 161, 163, 164, 166, 167, 168, 169, 170, 171, 173, 174, 175, 177, A1, A12, A13, A16, A22, A23, AB1, AB3, AB5, B28, B30, B48, B67, B68, B70, B73, B74, B76, B77, B78, B79, B80, C3, C17, CB4, CB9, CB12, CB13, D4, D6, G, G1, G3, Q, Q1, Q2	1	3892-P-2434	3891- B-574 forging, 18T, spur, 3.88" O.D., with 17T internal spline which has 2.0" minor diameter, includes external shift groove.
	Gear-sliding (2.68-1)	140, 148, 149, 172, 174, C17	1	3892-B-522	33891-B-574 forging, 17T, spur, 3.68" O.D., with 10T internal spline which has 2.25" major diameter, includes external shift groove.
32	Bearing-direct driving gear idler	R8, R10, R11	-	Part not used	
		All others	1	1228-C-3	Ball, 3.35" O.D., 1.77" bore, 0.75" wide.
33	Gear-direct drive (1.62-1)	26, 28, 41, 65, 69, 80, 83, 85, 86, 103, 118, 136, 138, 139, 140, 148, 149, 155, 156, 159, 160, 161, 163, 164, 166, 167, 172, 173, 174, 175, 177, A1, A12, A13, A16, A22, A23, AB1, AB3, AB5, B28, B30, B48, B67, B68, B70, B73, B74, B76, B77, B78, B79, B80, C3, C17, CB4, CB9, CB12, CB13, D4, D6, E26, E33, F2, F19, G, G1, G3, Q, Q1, Q2, W	1	3892-H-1802	3894-Q-241 forging, 31T, external helical, R.H., 6.7" O.D., 24T internal gear, 4.6" internal gear I.D.
	Gear-direct drive (1.85-1)	26, 28, 41, 65, 69, 80, 83, 85, 86, 103, 118, 136, 138, 139, 140, 155, 156, 159, 160, 161, 163, 164, 166, 167, 168, 169, 170, 171, 173, 174, 175, 177, A1, A12, A13, A16, A22, A23, AB1, AB3, AB5, B28, B30, B48, B67, B68, B70, B73, B74, B76, B77, B78, B79, B80, C3, C17, CB4, CB9, CB12, CB13, D4, D6, E26, E33, F2, F19, G, G1, G3, Q, Q1, Q2	1	3892-P-1836	3894-G-241 forging, 31T, external helical, R.H., 6.7" O.D., 22T internal gear, 4.2" internal gear I.D.

T-226 SERIES MAIN CASE

Item	Part Name	Model	Qty	Part Number	Description
33	Gear-direct drive (1.98-1)	159, E7, E43, E49, F, F20, F25, F26, F31, F33, F34, H, H3, HB, HB1, J, K4, K7, L, L1, L4, L8, L10, L19, L30, L35, L37, L40, L42, L43, L45, L46, L47, L48, L49, L50, L51, L52, L53, L54, M, M1, M3, M4, M5, N, N1, N2, P4, P7, S, S1, T, T1	1	3892-T-2126	3894-G-241 forging, 31T, external helical, R.H., 6.7" O.D., 15T internal gear, 3.59" minor diameter.
	Gear-direct drive (1.98-1)	26, 28, 41, 65, 69, 80, 83, 85, 86, 103, 118, 136, 138, 139, 140, 155, 156, 159, 160, 161, 163, 164, 166, 167, 168, 169, 170, 171, 173, 174, 175, 177, A1, A12, A13, A16, A22, A23, AB1, AB3, AB5, B28, B30, B48, B67, B68, B70, B73, B74, B76, B77, B78, B79, B80, C3, C17, CB4, CB9, CB12, CB13, D4, D6, F2, F19, G, G1, G3, Q, Q1, Q2, V	1	3892-D-1772	3894-G-241 forging, 31T, external helical, R.H., 6.7" O.D., 21T internal gear, 4.0" internal gear I.D.
	Gear-direct drive (1.99-1)	167, 176, E7, E43, E49, F, F20, F25, F26, F31, F33, F34, H, H3, HB, HB1, J, K4, K7, L, L1, L4, L8, L10, L19, L30, L35, L37, L40, L42, L43, L45, L46, L47, L48, L49, L50, L51, L52, L53, L54, M, M1, M3, M4, M5, N, N2, P4, P7, S, S1, T, T1	1	3892-N-2120	3894-G-241, forging, 2.75" overall length, 31T, external helical, R.H., 6.7" O.D., 17T internal gear, 4.0" minor diameter.
	Gear-direct drive (1.99-1)	132, 133, E38, E45, E50, E51, F32, X	1	3892-S-4604	3894-G-241 forging, 3.25" overall length, 31T, external helical, R.H., 6.7" O.D., 17T internal gear, 4.0" minor diameter.
	Gear-direct drive(2.18-1)	E7, E43, E49, F, F20, F25, F26, F31, F33, F34, K4, K7, L, L8, L10, L19, L30, L35, L37, L40, L42, L43, L45, L46, L47, L48, L49, L50, L51, L52, L53, L54, M, M5, N, N2, P4, P7, S, S1, T, T1	1	3892-D-2422	3894-G-241 forging, 31T external helical, R.H., 6.7" O.D., 16T internal gear, 3.79" internal gear I.D.
	(Continued)				

T-226 SERIES MAIN CASE

Item	Part Name	Model	Qty	Part Number	Description
33	Gear-direct drive (2.48-1)	26, 28, 41, 65, 69, 80, 83, 85, 86, 103, 118, 136, 138, 139, 140, 155, 156, 159, 160, 161, 163, 164, 166, 167, 168, 169, 170, 171, 173, 174, 175, 177, A1, A12, A13, A16, A22, A23, AB1, AB3, AB5, B28, B30, B48, B67, B68, B70, B73, B74, B76, B77, B78, B79, B80, C3, C17, CB4, CB9, CB12, CB13, D4, D6, G, G1, G3, Q, Q1, Q2	1	3892-G-1801	3894-G-241 forging, 31T, external helical, R.H., 6.7" O.D., 18T internal gear, 3.4" internal gear I.D.
	Gear-direct drive (2.68-1)	26, 28, 41, 65, 69, 80, 83, 85, 86, 103, 118, 136, 138, 139, 140, 148, 149, 155, 156, 159, 160, 161, 163, 164, 166, 167, 168, 169, 170, 171, 172, 173, 174, 175, 177, A1, A12, A13, A16, A22, A23, AB1, AB3, AB5, B28, B30, B48, B67, B68, B70, B73, B74, B76, B77, B78, B79, B80, C3, C17, CB4, CB9, CB12, CB13, D4, D6, G, G1, G3, Q, Q1, R10, R11	1	3892-K-1831	3894-G-241 forging, 31T, external helical, R.H., 6.7" O.D., 17T internal gear, 3.36" internal gear I.D.
	Gear-direct drive	R8, R10, R11	1	3892-C-1771	3894-G-241 forging, 2.75" overall length, 31T, external helical, R.H., 6.7" O.D., 10T internal gear, 2.5" major diameter.
34	Spacer-main shaft inner bearing	R11	1	1844-R-278	2.94" O.D., 2.0" I.D., 3.0" long.
		R8, R10	-	Part not used	
		All others	1	1844-R-422	2.25" O.D., 1.79" I.D., 0.68" long.
35	Bearing-direct driving gear idler	R8, R10, R11	-	Part not used	
		All others	1	1228-C-3	Ball, 3.35" O.D., 1.77" I.D., 0.75" wide.
36	Spacer-main shaft outer bearing	R8, R10, R11	1	1844-J-816	3.0" O.D., 2.03" I.D., 0.15" long.
		All others	1	1844-N-534	2.13" O.D., 1.78" I.D., 0.13" long.
37	Gasket-transfer case and cover	All	-	2297-A-7021	Silicone gasket, use as required.*
38	Cover-transfer case	E7, E26, E33, E38, E43, E45, E49, E50, E51, F, F2, F19, F20, F25, F26, F31, F32, F33, F34	1	3876-F-370	5876-E-369 casting, idler position has 6.0" diameter boss, 5 holes 0.44"- 14 on 5.0" bolt circle diameter, output position has 8 holes 0.5"- 13 on 6.5" bolt circle diameter, 7.75" diameter boss plus 1 hole 0.63" on 7.75" diameter boss.
		All others	1	3876-W-231	5876-X-230 casting, idler position has 6.13" diameter boss, 6 holes 0.44"- 14 on 5.5" bolt circle diameter, output position has 6.13" diameter boss, 6 holes on 5.5" bolt circle diameter.
39	Lockwasher-transfer case and cover	All	20	WA-16	0.67" O.D., 0.32" I.D., 0.09" thick.

* All preformed gaskets are replaced with silicone liquid gasket at time of service.

T-226 SERIES MAIN CASE

Item	Part Name	Model	Qty	Part Number	Description		
40	Nut-transfer case and cover	L1, L4, X	20	NL-16-1	0.38"- 24, 0.33" high, 0.56" across flats, grade 8.		
		All others	20	N-16-1	0.38"- 24, 0.33" high, 0.56" across flats, grade 8.		
41	Cone-main shaft rear bearing	All	1	3782	1.75" bore.		
42	Cup-main shaft rear bearing	All	1	3732	3.67" O.D.		
43	Shim-main shaft bearing cap	26, 28, 41, 65, 69, 80, 83, 85, 86, 103, 118, 132, 133, 136, 138, 139, 140, 155, 156, 159, 160, 161, 163, 164, 166, 167, 168, 169, 170, 171, 173, 174, 175, 177, B76, V	4	2803- P-562	0.003", use as required, 5.13" O.D., 3.91" I.D., 6 holes 0.47" diameter on 4.88" bolt circle with 2 large notches and 1 notch 0.5" diameter on I.D.		
			3	2803-Q-563	Same as P-562 except thickness 0.005", use as required.		
			3	2803-R-564	Same as P-562 except thickness 0.010", use as required.		
			4	2803-T-722	Same as P-562 except thickness 0.020", use as required.		
		148, 149, 172, A1, A12, A13, A16, A22, A23, AB1, AB3, AB5, C3, C17, CB4, CB9, CB12, CB13, D4, D6, G, G1, G3, R8, R10, R11, W	4	2803-P-562	0.003", use as required, 5.13" O.D., 3.91" I.D., 6 holes 0.47" diameter on 4.88" bolt circle with 2 large notches and 1 notch 0.5" diameter on I.D.		
			3	2803-Q-563	Same as P-562 except thickness 0.005", use as required.		
			3	2803-R-564	Same as P-562 except thickness 0.010", use as required.		
			1	2803-T-722	Same as P-562 except thickness 0.020", use as required.		
		176	4	2803-P-562	0.003", use as required, 5.13" O.D., 3.91" I.D., 6 holes 0.47" diameter on 4.88" bolt circle with 2 large notches and 1 notch 0.5" diameter on I.D.		
			3	2803-Q-563	Same as P-562 except thickness 0.005", use as required.		
			3	2803-R-564	Same as P-562 except thickness 0.010", use as required.		
			2	2803-T-722	Same as P-562 except thickness 0.020", use as required.		
		L8, L10, L19, L35, L37, L40, L42, L43, L45, L46, L47, L48, L49, L50, L51, L52, L53, L54	4	2803-P-562	0.003", use as required, 5.13" O.D., 3.91" I.D., 6 holes 0.47" diameter on 4.88" bolt circle with 2 large notches and 1 notch 0.5" diameter on I.D.		
			4	2803-Q-563	Same as P-562 except thickness 0.005", use as required.		
			4	2803-R-564	Same as P-562 except thickness 0.010", use as required.		
			1	2803-T-722	Same as P-562 except thickness 0.020", use as required.		
		B28, V30, V48, V67, V68, V70, V73, V74, V77, V78, V79, V80, E51, F, F20, F25, F26, F31, F33, F34, H, H3, HB, HB1, J, K4, K7, L, L1, L4, L30, M, M1, M3, M4, M5, N, N1, N2, P4, P7, Q, Q1, Q2, S, S1, T, T1, X	4	2803- P-562	0.003", use as required, 5.13" O.D., 3.91" I.D., 6 holes 0.47" diameter on 4.88" bolt circle with 2 large notches and 1 notch 0.5" diameter on I.D.		
			4	2803-Q-563	Same as P-562 except thickness 0.005", use as required.		
			4	2803-R-564	Same as P-562 except thickness 0.010", use as required.		
		(Continued)					

T-226 SERIES MAIN CASE

Item	Part Name	Model	Qty	Part Number	Description
43	Shim-main shaft bearing cap	E7, E26, E33, E38, E43, E45, E49, E50, F2, F19, F32	4	2803-G-553	0.003", use as required, 6.13" O.D., 4.75" I.D., with 6 holes 0.47" diameter on 5.5" bolt circle diameter, 1 notch 0.5" diameter.
			4	2803-H-554	Same as G-553 except thickness 0.005", use as required.
			4	2803-J-556	Same as G-553 except thickness 0.010", use as required.
44	Cover-main drive shaft rear bearing	133, 148, 172, 176, B74, E38, E43, E50, P7, Q1	1	3866-A-937	3866-R-1188 casting, 5.18" O.D., 3.38" I.D., 3.87" pilot, 1.20" wide with internal cast slot, 1 hole 0.13"- 27, 2.19" from center of cover.
		R8, R10, R11	1	3866-D-784	3866-X-1428 casting, 5.13" O.D., 3.5" bore, 0.81" wide, 6 holes 0.47" diameter on 4.88" bolt circle diameter.
		V	1	A-3266-X-934	3266-W-933 casting, 5.75" O.D., 3.35" I.D., 1.0" wide, 6 holes 0.47" diameter on 4.88" bolt circle diameter, 1 notch 0.5" diameter on I.D., includes item 49 (A-1205-D-1590).
		26, 103, 132, 138, 149, 161, 168, 169, 171, 173, A22, AB5, CB9, CB13, D6, E45, L37, L40, N1, N2, Q2	-	Part not used	
		All others	1	3866-H-346	Same as 3866-A-937 except less 0.13"- 27 diameter hole.
45	Lockwasher-main shaft rear bearing cover	A1, A12, A13, A16, A23, W	6	WALM7-2	0.77" O.D., 0.46" I.D., 0.11" thick.
		All others	4	WALM7-2	0.77" O.D., 0.46" I.D., 0.11" thick.
			2	1229-F-422	0.78" O.D., 0.04" thick, internal tooth type.
46	Stud/Capscrew-main shaft rear bearing cover	26, 41, 65, 69, 80, 83 85, 86, 103, 118, 132, 133, 136, 140, 148, 149, 159, 163, 164, 167, 169, 170, 171, 172, 173, 174, 175, 176, 177, AB1, AB3, AB5, B28, B30, B48, B67, B68, B70, B73, B74, B77, B78, B79, B80, C3, C17, CB4, CB9, CB12, CB13, D4, D6, E7, E26, E33, E38, E43, E45, E49, E50, E51, F, F2, F19, F20, F25, F26, F31, F32, F33, F34, G, G1, G3, H, H3, HB, HB1, J, K4, K7, L, L1, L4, L8, L10, L19, L30, L35, L37, L40, L42, L43, L45, L46, L47, L48, L49, L50, L51, L52, L53, L54, M, M1, M3, M4, M5, N, N1, N2, P4, P7, Q, Q1, Q2, R8, R10, R11, S, S1, V, X	4	SN-714-1	0.44"- 14/ 0.44"- 20, 1.75' long, grade 8.
			2	4X-675	1.56" long, 0.44"- 14/ 0.44"- 20, grade 8.
	(Continued)				

T-226 SERIES MAIN CASE

Item	Part Name	Model	Qty	Part Number	Description
46	Stud/Capscrew-main shaft rear bearing cover	28, 138, 139, 155, 156, 160, 161, 166, 168, B76	4	SN-714-1	0.44"- 14/ 0.44"-20, 1.75" long, grade 8.
			2	4X-679	2.5" long, 0.63"- 18 with 0.16" diameter hole in thread, 0.63"- 11 other end, grade 8.
		A1, A12, A13, A16, A23, W	6	S-279-1	0.44"- 14, 1.12" long, 0.62" across flats, grade 8.
		A22	4	S-279-1	0.44"- 14, 1.12" long, 0.62" across flats, grade 8.
			2	4X-675	1.56" long, 0.44"- 14/ 0.44"- 20, grade 6.
		T, T1	4	S-2710-1	0.44"-14, 1.25" long, 0.62" across flats, grade 8.
			2	4X-675	1.56" long, 0.44"- 14/ 0.44"- 20, grade 6.
47	Nut-main shaft rear bearing cap	132, 133, A1, A12, A13, A16, A23, AB1, AB3, AB5, W	-	Part not used	
			L1, L4, X	6	NL-17-1
		A22, T, T1	2	N-17-1	0.44"- 20, 0.42" high, 0.68" across flats.
		All others	6		
48	Sleeve-main shaft rear oil seal	R8, R10, R11	1	1874-S-227	2.5" O.D., 2.0" I.D., 0.81" thick.
49	Oil Seal-main shaft rear	R8, R10, R11	1	A-1805-Z-104	3.5" O.D., 2.5" shaft I.D., 0.47" wide, single lip with spring.
		V	1	A-1205-D-1590	3.36" O.D., 2.5" I.D., 0.75" thick, triple lip seal with 2 springs.
50	Deflector-main shaft rear	R10	1	2847-Z-312	4.81" O.D., 2.95" I.D., 0.81" long, 0.05" thick, included in item 51.
51	Flange/Yoke-main shaft rear	R8	1	A-3280-C-3201	72N yoke, 4.25" end hub to center cross assy., 2.0"- 10T spline, 4 holes 0.5"- 20, includes item 50 (welded 1.81" from hub end).
		R10	1	A-3897-C-705	17N yoke, 5.06" end hub to center cross assy., 2.0"- 10T spline, includes item 50.
		V	1	3280-P-8076	72N yoke, 4.17" end hub to center cross assy., 1.75"- 10T spline, 4 holes 0.5"- 20.
52	Nut-main shaft	HB, HB1, R8, R10, R11	1	1227-B-496	1.25"- 18, 0.62" high, 6 slots, 2.12" across flats, grade 8.
53	Cotter-main shaft nut	HB, HB1, R8, R10, R11	1	K-2416	0.13" diameter, 2.0" long.
54	Capscrew-idler shaft rear bearing cover	E7, E26, E33, E38, E43, E45, E49, E50, E51, F, F2, F19, F20, F25, F26, F31, F32, F33, F34	-	Part not used	
			T, T1	6	S-2710-2
		All others	6	S-279-2	0.44"- 14, 1.12" long, 0.62" across flats, grade 8.
55	Lockwasher-idler shaft rear bearing cover	E7, E26, E33, E28, E43, E45, E49, E50, E51, F, F2, F19, F20, F25, F26, F31, F32, F33, F34,	-	Part not used	
			All others	6	WALM7-2
56	Cover-idler shaft rear bearing	148, 149, 159, 172, L, L1, L8, L19, L30, L42, L43, L45, L46, L47, L48, L50, L51, L52, L53, L54, M, M1, M4, M5, P4, Q, Q1, Q2, S, S1, T, T1	1	A1-3866-Z-780	3866-Y-1270 casting, 6.13" O.D., 3.38" I.D., 4.72" pilot, 3.75" high, 6 holes 0.47" diameter equal spaced on 5.5" bolt circle diameter, 2 cast in slots 0.5", O.D., closed end 4.0" diameter, includes item 62 (HM-807010).
	(Continued)				

T-226 SERIES MAIN CASE

Item	Part Name	Model	Qty	Part Number	Description
56	Cover-idler shaft rear bearing	132, 133, 167, 176, H, H3, HB, HB1, J, K4, K7, L4, L10, L35, L37, L40, L49, M3, N, N1, N2, P7, X	1	A1-3866-K-895	3866-N-1288 casting, 6.13" O.D., 2.13" high, 6 holes 0.47" on 5.5" bolt circle diameter, 1.0" spotface, includes item 62, (HM-807010).
		D4	1	A-3866-Z-962	3866-T-1294 casting, same as A-3866-S-929 except O.D. closed end 4.0" diameter.
		D6	1	A-3866-S-929	3866-T-1294 casting, same as A-3866-Z-780 except 3.44" high and O.D. closed end turned to 3.97" diameter.
		G, G1, G3, V	1	A-3866-K-895	Same as A1-3866-K-895 except includes item 62 (59412).
		E7, E26, E33, E38, E43, E45, E49, E50, E51, F, F2, F19, F20, F25, F26, F31, F32, F33, F34	-	Part not used	
		All others	1	A-3866-Z-780	Same as A1-3866-Z-780 except includes item 62 (59412).
57	Shim-idler shaft bearing cap	26, 28, 41, 65, 69, 80, 83, 85, 86, 103, 118, 132, 133, 136, 138, 139, 140, 155, 156, 159, 160, 161, 163, 164, 166, 167, 168, 169, 170, 171, 173, 174, 175, 177, B76, V	4	2803-G-553	0.003", use as required, 6.13" O.D., 4.75" I.D., with 6 holes 0.47" diameter on 5.5" bolt circle diameter, 1 notch 0.5" diameter.
			3	2803-H-554	Same as G-553 except thickness 0.005", use as required.
			3	2803-J-556	Same as G-553 except thickness 0.010", use as required.
			3	2803-S-721	Same as G-553 except thickness 0.020", use as required.
		148, 149, 172 A1, A12, A13, A16, A22, A23, AB1, AB3, AB5, C3, C17, CB4, CB9, CB12, CB13, D4, D6, G, G1, G3, R8, R10, R11, W	4	2803-G-553	0.003", use as required, 6.13" O.D., 4.75" I.D., with 6 holes 0.47" diameter on 5.5" bolt circle diameter, 1 notch 0.5" diameter.
			3	2803-H-554	Same as G-553 except thickness 0.005", use as required.
			3	2803-J-556	Same as G-553 except thickness 0.010", use as required.
			1	2803-S-721	Same as G-553 except thickness 0.020", use as required.
		176	4	2803-G-553	0.003", use as required, 6.13" O.D., 4.75" I.D., with 6 holes 0.47" diameter on 5.5" bolt circle diameter, 1 notch 0.5" diameter.
			3	2803-H-554	Same as G-553 except thickness 0.005", use as required.
			3	2803-J-556	Same as G-553 except thickness 0.010", use as required.
			2	2803-S-721	Same as G-553 except thickness 0.020", use as required.
		All others	4	2803-G-553	0.003", use as required, 6.13" O.D., 4.75" I.D., with 6 holes 0.47" diameter on 5.5" bolt circle diameter, 1 notch 0.5" diameter.
			4	2803-H-554	Same as G-553 except thickness 0.005", use as required.
			4	2803-J-556	Same as G-553 except thickness 0.010", use as required.
		58	Spacer-idler shaft rear bearing	E7, E26, E33, E38, E43, E45, E49, E50, E51, F, F2, F19, F20, F25, F26, F31, F32, F33, F34	1

T-226 SERIES MAIN CASE

Item	Part Name	Model	Qty	Part Number	Description
59	Capscrew-idler shaft bearing lock	All	2	S-278-2	0.44"- 14, 1.0" long, 0.62" across flats, grade 8.
60	Lock-idler shaft bearing	All	1	1898-G-605	1.78" long, 0.05" thick with 2 tabs 0.31" wide each end, 2 holes 0.45" diameter 1.06" apart.
61	Washer-idler shaft rear lock	All	1	1829-F-370	205" O.D., 0.19" thick with 2 holes 0.47" diameter on 1.06" bolt circle diameter.
62	Cup-idler shaft rear bearing	132, 133, 148, 149, 159, 167, 172, 176, E7, E26, E33, E38, E43, E45, E49, E50, E51, F, F2, F19, F20, F25, F26, F31, F32, F33, F34, H, H3, HB, HB1, J, K4, K7, L, L1, L4, L8, L10, L19, L30, L35, L37, L40, L42, L43, L45, L46, L47, L48, L49, L50, L51, L52, L53, L54, M, M1, M3, M4, M5, N, N1, N2, P4, P7, Q, Q1, Q2, S, S1, T, T1, X	1	HM-207010	4.13" O.D.
		All others	1	59412	4.13" O.D.
63	Cone-idler shaft rear bearing	132, 133, 148, 149, 159, 167, 172, 176, E7, E26, E33, E38, E43, E45, E49, E50, E51, F, F2, F19, F20, F25, F26, F31, F32, F33, F34, H, H3, HB, HB1, J, K4, K7, L, L1, L4, L8, L10, L19, L30, L35, L37, L40, L42, L43, L45, L46, L47, L48, L49, L50, L51, L52, L53, L54, M, M1, M3, M4, M5, N, N1, N2, P4, P7, Q, Q1, Q2, S, S1, T, T1, X	1	HM-807046	2.0" bore
		All others	1	59201	2.0" bore
64	Capscrew-transfer case and cover	All	3	S-2612-1	0.38"- 16, 1.5" long, 0.56" across flats, grade 8, replaces S-2611-1, 1.38" long.
65	Lockwasher-transfer case and cover	All	3	WA-16	0.67" O.D., 0.32" I.D., 0.09" thick.
66	Gear-idler	132, 133, 148, 149, 172, E38, E45, E50, E51, F32, X	1	3892-D-4606	3894-S-4607 forging, 32T, helical, L.H., 10T internal spline, 2.5" major diameter, 3.38" overall gear width.
		All others	1	3892-B-1770	3892-S-2567 forging,, 32T, helical, L.H., 10T internal spline, 2.5" major diameter, 2.88" overall gear width.

T-226 SERIES MAIN CASE

Item	Part Name	Model	Qty	Part Number	Description
67	Gear-driven	132, 133, 148, 149, 172, X	1	3892-F-4608	3894-G-241 forging, 3.38" overall length, 31T, external helical, R.H., 6.7" O.D., 10T internal gear, 2.5" major diameter.
		E7, E26, E33, E38, E43, E45, E49, E50, E51, F, F2, F19, F20, F25, F26, F31, F32, F33, F34	-	Part not used	
		All others	1	3892-C-1771	3894-G-241 forging, 2.75" overall length, 31T, helical, R.H., 6.7" O.D., 10T, 2.5" major diameter internal spline.
68	Washer-oil thrower gear thrust	V	1	1829-X-544	4.0" O.D., 2.53" I.D., 0.13" thick.
69	Sleeve-oil thrower gear	V	1	1874-V-48	3.13" O.D., 2.52" I.D., 0.91" wide, 10 internal teeth.
70	Bushing-oil thrower gear	V	1	1825-F-162	3.25" O.D., 3.13" I.D., 0.91" long, may be split construction, included in item 71.
71	Gear-oil thrower (1.98-1)	V	1	A-3892-W-1063	43T, spur, 8.88" O.D., includes item 70.
72	Washer-oil thrower gear thrust	V	1	1829-X-544	4.0" O.D., 2.53" I.D., 0.16" thick.
73	Spacer-idler shaft gear	R8, R10, R11	1	1844-V-750	3.0" O.D., 2.53" I.D., 3.69" long.
		N1, V	-	Part not used	
		All others	1	1844-R-70	3.0" O.D., 2.53" I.D., 1.19" long.
74	Gear-low speed (1.62-1)	26, 28, 41, 65, 69, 80, 83, 85, 86, 103, 118, 136, 138, 139, 140, 148, 149, 155, 156, 159, 160, 161, 163, 164, 166, 167, 168, 169, 170, 171, 172, 173, 174, 175, 177, A1, A12, A13, A16, A22, A23, AB1, AB3, AB5, B28, B30, B48, B67, B68, B70, B73, B74, B76, B77, B78, B79, B80, C3, C17, CB4, CB9 CB12, CB13, D4, D6, E26, E33, F2, F19, G, G1, G3, Q, Q1, Q2, W	1	3892-E-629	3892-F-3256 forging, 40T, spur, 8.28" O.D., 10T, 2.5" major diameter internal spline.
	Gear-low speed (1.62-1)	132, 133, 167, 176, E7, E38, E43, E45, E49, E50, E51, F, F20, F25, F26, F31, F32, F33, F34, H, H3, HB, HB1, J, K4, K7, L, L1, L4, L8, L10, L19, L30, L35, L37, L40, L42, L43, L45, L46, L47, L48, L49, L50, L51, L52, L53, L54, M, M1, M3, M4, M5, N, N2, P4, P7, S, S1, T, T1, X	1	3892-Q-2123	3892-D-3254 forging, 35T, spur, 8.98" O.D., 10T, 2.5" major diameter internal spline.
	(Continued)				

T-226 SERIES MAIN CASE

Item	Part Name	Model	Qty	Part Number	Description
74	Gear-low speed (1.85-1)	26, 28, 41, 65, 69, 80, 83, 85, 86, 103, 118, 136, 138, 139, 140, 155, 156, 159, 160, 161, 163, 164, 166, 167, 168, 169, 170, 171, 173, 174, 175, 177, A1, A12, A13, A16, A22, A23, AB1, AB3, AB5, B28, B30, B48, B67, B68, B70, B73, B74, B76, B77, B78, B79, B80, C3, C17, CB4, CB9, CB12, CB13, D4, D6, E26, E33, F2, F19, G, G1, G3, Q, Q1, Q2	1	3892-C-627	3892-D-3254 forging, 42T, spur, 8.86" O.D., 10T, 2.5" major diameter internal spline.
	Gear-low speed (1.98-1)	26, 28, 41, 65, 69, 80, 83, 85, 86, 103, 118, 136, 138, 139, 140, 155, 156, 159, 160, 161, 163, 164, 166, 167, 168, 169, 170, 171, 173, 174, 175, 177, A1, A12, A13, A16, A22, A23, AB1, AB3, AB5, B28, B30, B48, B67, B68, B70, B73, B74, B76, B77, B78, B79, B80, C3, C17, CB4, CB9, CB12, CB13, D4, D6, F2, F19, G, G1, G3, Q, Q1, Q2, V	1	3892-S-539	3892-D-3254 forging, 43T, spur, 8.88" O.D., 10T, 2.5" major diameter internal spline.
	Gear-low speed (2.18-1)	E7, E43, E49, F, F20, F25, F26, F31, F33, F34, K4, K7, L, L8, L10, L19, L30, L35, L37, L40, L42, L43, L45, L46, L47, L48, L49, L50, L51, L52, L53, L54, M, M5, N, N2, P4, P7, S, S1, T, T1	12	3892-B-2420	3892-Z-3410 forging, 36T, spur, 9.22" O.D., 10T, 2.5" major diameter internal spline.
	Gear-low speed (2.39-1)	159, E7, E43, E49, F, F20, F25, F26, F31, F33, F34, H, F3, FB, FB1, J, K4, K7, L, L1, L4, L8, L10, L19, L30, L35, L37, L40, L42, L43, L45, L46, L47, L48, L49, L50, L51, L52, L53, L54, M1, M3, M4, M5, N, N1, N2, P4, P7, S, S1, T, T1	1	3892-R-2124	3892-D-3410, forging, 37T, spur, 9.45" O.D., 10T, 2.5" major diameter internal spline.
	(Continued)				

T-226 SERIES MAIN CASE

Item	Part Name	Model	Qty	Part Number	Description
74	Gear-low speed (2.48-1)	26, 28, 41, 65, 69, 80, 83, 85, 86, 103, 118, 136, 138, 139, 140, 155, 156, 159, 160, 161, 163, 164, 166, 167, 168, 169, 170, 171, 173, 174, 175, 177, A1, A12, A13, A16, A22, A23, AB1, AB3, AB5, B28, B30, B48, B67, B68, B70, B73, B74, B76, B77, B78, B79, B80, C3, C17, CB4, CB9, CB12, CB13, D4, D6, G, G1, G3, Q, Q1, Q2	1	3892-Y-129	3892-D-3254 forging, 46T, spur, 9.48" O.D., 10T, 2.5" major diameter internal spline.
	Gear-low speed (2.68-1)	26, 28, 41, 65, 69, 80, 83, 85, 86, 103, 118, 136, 138, 139, 140, 148, 149, 155, 156, 159, 160, 161, 163, 164, 166, 167, 168, 169, 170, 171, 172, 173, 174, 175, 177, A1, A12, A13, A16, A22, A23, AB1, AB3, AB5, B28, B30, B48, B67, B68, B70, B73, B74, B76, B77, B78, B79, B80, C3, C17, CB4, CB9, CB12, CB13, D4, D6, G, G1, G3, Q, Q1, Q2	1	3892-C-523	3892-E-3255 forging, 47T, spur, 9.68" O.D., 10T, 2.5" major diameter internal spline.
75	Taper pin-transfer case cover	All	4	1846-N-352	1.5" long, 0.41" O.D., large end 0.25" per foot taper.
76	Case-transfer gear	41, V	1	A1-3875-V-672	Same as A1-3875-M-351 except as 2 holes 0.75"- 14 N.P.S.F. on case, 1 hole 2.25" below and left of output gear center, 1 hole 1.81" below and right of output gear center, both holes 1.75" from cover mounting face, case part number 3875-V-672.
		103, 132, 133, 138, 148, 149, 155, 161, 168, 169, 171, 172, 173, 176, A22, AB5, CB9, CB13, L40, L49, L52, N1, N2, X	1	A1-3875-J-504	Same as 3875-M-351 except add 1 hole 0.25"- 18 N.P.S.F. 2.75" from cover surface on side wall below output gear center, case part number 3875-J-504.
		A23	1	A1-3290-N-274	Same as A1-3875-M-351 except add 1 hole 0.75"- 14 N.P.S.F. 1.75" from cover mounting face on bottom wall and 0.56" to right input/output gear centerline, case part number 3290-N-274.
		E7, E26, E33, E49, E51, F, F2, F19, F20, F25, F26, F31, F32, F33, F34	1	A18-3875-M-351	Same as A1-3875-M-351 except includes cover (F-370) in place of (W-231) item 38.
	(Continued)				

T-226 SERIES MAIN CASE

Item	Part Name	Model	Qty	Part Number	Description
76	Case-transfer gear	E38, E43, E45, E50	1	A3-3875-J-504	Same as A1-3875-M-351 except add 1 hole 0.25"- 18 N.P.S.F. on case side wall 2.75" from cover mounting face below and left of output gear bore, case part number 3875-J-504.
		B74, L37, P7, Q1, Q2	1	A1-3875-T-540	Same as A1-3875-M-351 except add 1 hole 0.75"- 14 N.P.S.F. on side wall 4.0" from cover mounting face 1.81" below and left of output gear bore and replace item silastic (2297-A-7021) with 2808-X-154, case part number 3875-T-540.
		R8, R10, R11	1	A24-3875-M-351	Same as A1-3875-M-351 except add item 16 and omit item 15.
		All others	1	A1-3875-M-351	5875-L-350 casting, less all holes on case side wall below output gear bore, includes item 38 (W-231), item 64 (2 pieces) item 75 (4 pieces) and item 15, case part number 3875-M-351.
77	Plug-transfer case	155, X	1	P-24	Non-magnetic, 0.25"- 18 N.P.T.F., 0.41" long, female, square socket.
78	Nipple-oil filler to gear case	B74, E43, L37, P7, Q1, Q2	1	1898-D-836	1.5" long, 0.82" I.D., 0.75" standard pipe thread both ends, replaces 1898-Q-823, 3.0" long.
79	Elbow-oil filler and lever	V	1	1898-S-201	0.75" S.P.T., 1.88" long male with 0.69" I.D., 0.75" S.P.T. female end 1.25" long
	Elbow-lubricating pump	B74, E43, L37, P7, Q1, Q2	1	1898-B-1198	Female both ends, one end 0.75" S.P.T., 1.19" long, other end 0.5" S.P.T., 1.25" long.
80	Name tag	176, E51, F32, W, X	1	2297-Y-4835	3.0" long, 1.25" high, 0.02" thick, with 2 holes 0.15" diameter.
		28, 138, 139, 155, 156, 160, 161, 166, 168, B76, D4, D6, G, G1, G3, H, H3, HB, HB1, J, L1, L4, M1, M3, M4, N, N1, N2, S, S1	-	Part not used	
		All others	1	1199-K-1493	Same as Y-4835 except holes 0.13" diameter.
81	Screw-name plate	28, 138, 139, 155, 156, 160, 161, 166, 168, B76, D4, D6, G, G1, G3, H, H3, HB, HB1, J, L1, L4, M1, M3, M4, N, N1, N2, S, S1	-	Part not used	
		All others	2	9X-16	0.25" long, 0.14" diameter.
82	Plug-transfer case oil level and filler	L43, L53	1	P-212	0.75"- 14 N.P.T.F., 0.53" long, non-magnetic, female, square socket.
		All others	1	P-112	Male, square head, 0.75"- 14 N.P.T.F., 0.62" long, non-magnetic.
83	Plug-transfer case oil drain	41	1	1250-E-473	Magnetic, 0.75"- 14, 1.31" high, female square head socket.
		A23	1	1850-A-131	Magnetic, 0.75"- 14 N.P.T.F., 0.64" long, female hex socket.
		V	1	1850-T-150	0.75"- 14 N.P.T.F., 0.62" long, magnetic female, square socket.
		All others	1	1250-U-125	0.5"- 14 N.P.T.F., 0.73" long, 0.38" female square socket or 0.38" female hex socket, magnetic, replaces 1850-S-97, (0.41" female square socket, 0.92" long).

T-226 SERIES MAIN CASE

Item	Part Name	Model	Qty	Part Number	Description
84	Shaft-transfer idler	132, 133, 148, 149, 159 167, 172, 176, E7, E26, E33, E38, E43, E45, E49, E50, E51, F, F2, F19, F20, F25, F26, F31, F32, F33, F34, H, H3, HB, HB1, J, K4, K7, L, L1, L4, L8, L10, L19, L30, L35, L37, L40, L42, L43, L45, L46, L47, L48, L49 L50, L51, L52, L53, L54, M, M1, M3, M4, M5, N, N1, N2, P4, P7, Q, Q1, Q2, S, S1, T, T1, X	1	3880-C-861	10.88" long, 1 spline 6.28" long 2.51"- 10T, 2 holes 0.44"- 14 one end on 1.06" bolt circle diameter, 3 grooves 0.13" wide, 0.13" wide key slot on 2.0" journal.
		A23	1	A-3297-L-168	10.68" long, 2.51"- 10T spline 6.28" long, 1 end has 2 holes 0.44"- 14 on 1.06" bolt circle diameter, other end has 0.55" diameter hole 0.56" deep, includes item 95.
		All others	1	3880-G-787	Same as A-3297-L-168 except less 0.55" diameter hole 0.56" deep one end.
85	Speedo Drive Gear Key	41, 65, 85, 118, 132, 133, 136, 139, 148, 149, 156, 159, 160, 161, 164, 166, 168, 171, 172, 173, 175, 176, A12, B48, B67, B68, B73, B74, B76, B77, B78, B80, CB9, CB12, D6, E33, E38, E43, E45, E49, E50, E51, F19, F20, F25, F31, F32, F33, F34, G1, H3, HB1, J, K7, L4, L10, L19, L30, L35, L37, L40, L42, L43, L46, L47, L48, L49, L50, L51, L52, L53, L54, M3, M5, N1, N2, P7, R10, S1, T1, V, X	1	16X-70	0.13" x 0.5" Woodruff.
86	Cone-idler shaft front bearing	26, 28, 41, 65, 69, 80, 83, 85, 86, 103, 118, 136, 138, 139, 140, 155, 156, 160, 161, 163, 164, 166, 168, 169, 170, 171, 173, 174, 175, 177, A1, A12, A13, A16, A22, A23, AB1, AB3, AB5, B28, B30, B48, B67, B68, B70, B73, B74, B76,B77, B78, B79, B80, C3, C17, CB4, CB9, CB12, CB13, D4, D6, G, G1, G3, R8, R10, R11, V, W	1	3767	2.06" bore.
	(Continued)				

T-226 SERIES MAIN CASE

Item	Part Name	Model	Qty	Part Number	Description
86	Cone-idler shaft front bearing	132, 133, 148, 149, 172, E38, E45, E50, E51, F32, X	1	39578	2.13" bore.
		All others	1	45287	2.13" bore.
87	Cup-idler shaft front bearing	26, 28, 41, 65, 69, 80, 83, 85, 86, 103, 118, 136, 138, 139, 140, 155, 156, 160, 168, 169, 170, 171, A1, A12, A13, A16, A22, A23, AB1, AB3, AB5, B28, B30, B48, B67, B68, B70, B73, B74, B76, B77, B78, B79, B80, C3, C17, CB4, CB9, CB12, CB13, D4, D6, G, G1, G3, R8, R10, R11, V, W	1	3732	3.88" O.D.
		132, 133, 148, 149, 172, E38, E45, E50, E51, F32, X	1	39528	4.72" O.D.
		All others	1	45220	4.13" O.D.
88	Snap Ring-idler shaft front bearing	26, 28, 41, 65, 69, 80, 83, 85, 86, 103, 118, 136, 138, 139, 140, 155, 156, 160, 168, 169, 170, 171, A1, A12, A13, A16, A22, A23, AB1, AB3, AB5, B28, B30, B48, B67, B68, B70, B73, B74, B76, B77, B78, B79, B80, C3, C17, CB4, CB9, CB12, CB13, D4, D6, E26, E33, G, G1, G3, R8, R10, R11, V, W	1	1854-H-138	0.16" wide, 0.1" thick, fits into 1.9" groove.
		All others	1	1854-W-257	0.19" wide, 0.09" thick, fits into 2.0" groove.
89	Speedo Drive Gear	65, 85, 132, 133, 136, 148, 149, 159, 172, 175, 176, A12, B74, CB9, CB12, E38, E45, E50, E51, F19, E32, F33, HB1, L30, L42, M4, S1, X	1	1199-B-1120	2.82" O.D., 2.03" I.D., 1.0" thick, 3T.
		139, 156, 160, 161, 166, 168, 173, B48, B67, B68, B73, B76, B77, B78, B80, D6, E33, E49, F20, F34, G1, L19, L46, L47, L51, L52, M5	1	1199-P-1108	2.82" O.D., 2.0" I.D., 1.0" thick, 4T.
		41, 118, 164, 171, E43, F25, F31, H3, K7, L4, L10, L35, L37, L40, L43, L48, L49, L50, L53, L54, M3, N1, N2, P7, R10, T1, V	1	1199-S-1111	2.87" O.D., 2.0" I.D., 1.0" thick, 3T.

T-226 SERIES MAIN CASE

Item	Part Name	Model	Qty	Part Number	Description
90	Snap Ring-speedo drive gear	41, 65, 85, 118, 132, 133, 136, 1369, 148, 149, 156, 159, 160, 161, 164, 166, 168, 171, 172, 173, 175, 176, A12, B48, B67, B68, B73, B74, B76, B77, B78, B80, CB9, CB12, D6, E33, E38, E43, E45, E49, E50, E51, F19, F20, F25, F31, F32, F33, F34, G1, H3, HB1, K7, L4, L10, L19, L30, L35, L37, L40, L42, L43, L46, L47, L48, L49, L50, L51, L52, L53, L54, M3, M4, M5, N1, N2, P7, R10, S1, T1, V, X	1	1854-H-138	0.16" wide, 0.1" thick, fits into 1.9" groove, replaces 1854-W-257, (0.19" wide and fits into 2.0" groove).
91	Gasket-idler shaft cover	E7, E26, E33, E38, E43, E45, E49, E50, E51, F, F2, F19, F20, F25, F26, F31, F32, F33, F34	-	Part not used	
		All others	-	2297-A-7021	Silicone gasket, use as required.*
92	Cover-idler shaft front bearing	132, 133, 148, 149, 172, E38, E45, E50, E51, F32, X	1	A-3266-V-828	3266-U-827 casting, 6.12" O.D., 3.5" I.D., 2.25" high, 5 holes 0.47" diameter on 5.5" bolt circle diameter, also extra boss with 0.81" - 20 hole, includes item 123.
		159, 167, 176, E7, E26, E33, E43, E49, F, F2, F20, F25, F26, F31, F33, F34, H, H3, HB, HB1, J, K4, K7, L, L1, L4, L8, L19, L30, L35, L37, L40, L42, L43, L45, L46, L47, L48, L49, L50, L51, L52, L53, L54, M, M1, M3, M4, M5, N, N1, N2, P4, P7, Q, Q1, Q2, S, S1, T, T1	1	A1-3866-L-896	3866-W-1271 casting, 3.31" high, 5 holes 0.47" diameter on 5.5" bolt circle diameter with 2 holes on horizontal center, 4.72" cage pilot diameter, 1 hole 0.81" - 20 N.S. tap with 1.25" diameter spotface, includes item 87 (45220) and 123.
		A23	1	A1-3266-J-998	3266-H-998 casting, 6.38" O.D., 3.87" I.D., 3.38" high, 0.47" diameter 6 holes equal spaced on 5.5" bolt circle diameter, cast in boss with 0.81" - 20 hole, includes item 87 (3732) and 123.
		F19	1	A1-3866-P-952	Same as L-896 except 5 hole pattern is modified to rotate 4 holes 7 degrees off horizontal center.
		All others	1	A1-3866-A-781	3866-W-1271 casting, 6.13" O.D., 3.5" I.D., 3.31" high, 5 holes 0.47" diameter on 5.5" bolt circle diameter, 2 cast in boss with 0.81" - 20 thread, includes items 87 (3732) and 123.

* All preformed gaskets are replaced with silicone liquid gasket at time of service.

T-226 SERIES MAIN CASE

Item	Part Name	Model	Qty	Part Number	Description
93	Lockwasher-idler shaft front bearing	All	5	WALM7-2	0.77" O.D., 0.46" I.D., 0.11" thick
94	Capscrew-idler shaft front bearing	T, T1	3	S-2710-2	0.44"- 14, 1.25" long, 0.62" across flats, grade 8.
		All others	3	S-279-2	0.44"- 14, 1.12" long, 0.62" across flats, grade 8.
		All	2	S-2718-2	0.44"- 14, 2.25" long, 0.62" across flats, grade 8.
95	Button-idler shaft pump drive	A23	1	2297-A-3537	0.84" long, 0.75" diameter head with slot 0.19" wide.
96	Pump Assy.	A23	1	A-3280-B-8192	2.76" x 3.76", input/output ports 0.5" N.P.T., 4 mounting holes 0.31" diameter.
97	Fitting-elbow	A23	1	2206-L-12	90 degree elbow fitting.
98	Washer-pump mounting capscrew	A23	4	1229-E-1669	0.62" O.D., 0.34" I.D., 0.06" thick.
99	Capscrew-pump mounting	A23	4	S-1528-1	0.31"- 24, 3.5" long, 0.5" across flats, grade 8.
100	Fitting Assy.-elbow and screen	A23	1	A-2206-V-100	6.0" long end tube to center elbow, elbow 0.88"- 14, 1.45" long center elbow to end thread.
101	Tube Assy.-suction	A23	1	A-3196-U-73	0.63" diameter copper tube, developed length 12.6", includes nuts and sleeves.
102	Fitting-elbow	A23	1	2206-L-12	90 degree elbow fitting.
103	Plug-speedo driven gear hole	80, 83, 86, 103, 140, 155, 163, 167, 170, 174, 177, A1, A12, A13, A16, A22, A23, AB3, AB5, B70, C17, Q1, Q2, R8, R11, W	1	1850-R-18	Metal threaded plug, replaces 1850-Z-104 plastic plug, 0.85" diameter, 0.56" long.
104	Bushing-speedo driven gear	All	1	1199-M-1105	Flanged, 0.44" flange O.D., 0.03" flange width, 0.31" O.D., 0.25" I.D., 0.34" thick.
105	Speedo Driven Gear	65, 85, 132, 133, 136, 148, 149, 159, 172, 175, 176, A12, B74, CB9, CB12, E38, E45, E50, E51, F19, F32, F33, HB1, L30, L42, M4, S1, X	1	1199-A-1119	Same as Q-1109 except has 13T, mates with item 89 (B-1120).
		41, 118, 164, 171, E43, F25, F31, H3, K7, L4, L10, L35, L37, L40, L43, L48, L49, L50, L53, L54, M3, N1, N2, P7, R10, T1, V	1	1199-R-1110	Same as Q-1109 except no saw tooth slot one end and has 12T, mates with item 89 (S-1111).
		139, 156, 160, 161, 166, 168, 173, B76, B77, B80, D6, E33, E49, F34, G1, L51, L52, M5	1	1199-Q-1109	4.04" long, 0.47" body diameter, with 14T, has saw tooth slot one end 1.1" long, mates with item 89 (P-1108).
		B48, B67, B68, B73, B78, F20, L46, L47	1	1109-J-1154	15T, mates with item 89 (P-1108).
		L19	1	1898-R-1188	4.04" long, 0.41" body diameter, 0.15" square hole 1 end, 14T.
			1	1430-B-2	0.56" O.D., 0.38" I.D., 0.09" thick.
106	O-Ring-speedo driven gear	E43, F31, K7, L10, L35, L37, L40, L49, N2, P7	1	1430-B-2	0.56" O.D., 0.38" I.D., 0.09" thick.

T-226 SERIES MAIN CASE

Item	Part Name	Model	Qty	Part Number	Description
107	Speedo Drive Gear Sleeve	41, 65, 85, 118, 132, 133, 136, 139, 148, 149, 156, 159, 160, 161, 166, 168, 172, 173, 175, 176, A12, B48, B67, B68, B73, B74, B76, B77, B78, B80, CB9, CB12, D6, E33, E38, E45, E49, E50, E51, F19, F20, F25, F32, F33, F34, G1, H3, HB1, L4, L19, L30, L42, L43, L46, L47, L50, L51, L52, L53, L54, M3, M4, M5, N1, S1, T1, V, X	1	1199-N-1106	0.47" thru hole, 0.88"- 18 NS male thread one end, 0.5" O.D., 0.13"- 20 male thread other end, 0.41" I.D.
		164, 171, L48, R10	1	1199-L-1156	1.26" long, 1 end has 0.88"- 18 external thread and 0.5" I.D., other end has 0.81"- 20 thread and 0.44"- 14 I.D.
		E43, F31, K7, L10, L35, L37, L40, L49, N2, P7	1	1898-P-1056	Same as L-1156 except has 0.5" I.D.
108	Cotter-front driven shaft	AB1, AB3, AB5	1	K-2416	0.13" diameter, 2.0" long.
109	Locknut-front driven shaft	A1, A12, A13, A16, A22, A23, J, W	1	1227-Z-936	1.25"- 18, 0.62" high, 1.6" across flats.
		AB1, AB3, AB5	1	1227-B-496	1.25"- 18, 0.62" high, 6 slots, 2.12" across flats, grade 8.
110	Flange/Yoke-front driven	A12	1	A1-3280-D-1980	16N yoke, 5.0" end hub to center cross assy., 2.0"- 10T spline, includes item 111 (N-716) assembled.
		A13	1	A-3280-Z-3224	92N yoke, 4.25" end hub to center cross assy., 2.0"- 10T spline, 4 holes 0.5"- 20 in ears, includes item 111 (Z-312) assembled 1.94" from end hub.
		A23	1	A-3280-C-1979	1600 flange, 3.63" end hub to flange face, 2.0"- 10T spline, 8 holes 0.38" diameter equal spaced on 6.12" bolt circle diameter, includes item 111 (Z-312) assembled 1.91" from hub end.
		AB3	1	A1-3280-C-3201	72N yoke, 4.25" end hub to center cross assy., 2.0"- 10T spline, 4 holes 0.5"- 20, includes item 111 (Z-312) tack welded at yoke shoulder.
		AB5	1	A1-3897-S-331	1550 flange, 4.63" end hub to flange face, 2.0"-10T spline, 4 holes 0.51" diameter on 4.75" bolt circle diameter, includes item 111 (Z-312) assembled 1.81" from hub end.
		W	1	A1-3897-Y-675	17 series yoke, 5.63" end hub to center cross assy., 2.0"- 10T spline, includes item 111 (C-367) fitted.
111	Deflector-front driven	A12	1	DEFR47-5	4.63" O.D., 2.94" I.D., 0.31" long.
		A13, A23, AB3, AB5	1	2847-Z-312	4.81" O.D., 2.95" I.D., 0.81" long, 0.05" thick.
		W	1	2847-C-367	4.75" O.D., 2.94" I.D., 0.69" long, 0.05" thick.

T-226 SERIES MAIN CASE

Item	Part Name	Model	Qty	Part Number	Description
112	Oil Seal-front driven shaft	132, 133, 148, 149, 172, 176, C3, C17, CB4, CB9, CB12, CB13, E7, E26, E33, E38, E43, E45, E49, E50, E51, F, F2, F19, F20, F25, F26, F31, F32, F33, F34, N, N1, N2, T, T1, V	-	Part not used	
		All others	1	A-1205-U-1529	4.0" O.D., 2.94" I.D., 0.45" wide, single lip with spring and dirt lip, replaces A-1805-V-152, (0.63" wide, 2.03" shaft I.D.).
113	Capscrew-driven shaft front cover	A1, A12, A13, A16, A22, A23, W	6	S-279-1	0.44"- 14, 1.12" long, 0.62" across flats, grade 8.
		T, T1	6	S-2710-1	0.44"- 14, 1.25" long, 0.62" across flats, grade 8.
114	Lockwasher-driven shaft front cover	A1, A12, A13, A16, A22, A23, T, T1, W	6	WALM7-2	0.77" O.D., 0.46" I.D., 0.11" thick.
115	Cover-driven shaft front bearing	A1, A12, A13, A16, A22, A23, AB1, AB3, AB5, J, W	1	A-3866-C-367	3838-F-292 casting, 1.18" long, 6.13" O.D., 3.63" I.D., 6 holes 0.47" diameter on 5.5" bolt circle diameter, includes item 112.
		T, T1	1	3866-K-427	3866-F-1202 casting, 5.88" O.D., 3.88" I.D., 4.72" pilot, 2.87" high, 4 cast notches 0.5" wide, 6 holes 0.47" diameter on 5.5" bolt circle diameter.
116	Nut-driven shaft front bearing cap	AB1, AB3, AB5, C3, C17, CB4, CB9, CB12, CB13, J, N, N1, N2	6	N-17-1	0.44"- 20, 0.38" high, 0.68" across flats.
117	Stud-driven shaft front bearing cap	AB1, AB3, AB5, C3, C17, CB4, CB9, CB12, CB13, J, N, N1, N2	6	SN-714-1	0.44"- 14, 14/0.44"- 20, 1.75" long, grade 8.
118	Lockwasher-driven shaft front bearing cap	AB1, AB3, AB5, C3, C17, CB4, CB9, CB12, CB13, J, N, N1, N2	6	WALM7-2	0.77" O.D., 0.46" I.D., 0.11" thick.
119	Cover-driven shaft front bearing	C3, C17, CB4, CB9, CB12, CB13, N, N1, N2	1	3866-K-427	3866-F-1202 casting, 5.88" O.D., 3.88" I.D., 4.72" pilot, 2.87" high, 4 cast notches 0.5" wide, 6 holes 0.47" diameter on 5.5" bolt circle diameter.
		AB1, AB3, AB5, J	1	3866-C-367	3838-F-292 casting, 6.13" O.D., 3.63" I.D., 1.18" high, 6 holes 0.47" diameter on 5.5" bolt circle diameter.
120	Gasket-driven shaft front cover	A1, A12, A13, A16, A22, A23, AB1, AB3, AB5, C3, C17, CB4, CB9, CB12, CB13, J, N, N1, N2, T, T1, W	-	2297-A-7021	Silicone gasket, use as required.*
121	Cup-driven shaft front bearing	E7, E26, E33, E38, E43, E45, E49, E50, E51, F, F2, F19, F20, F25, F26, F31, F32, F33, F34	-	Part not used	
		All others	1	33472	4.72" O.D.

* All preformed gaskets are replaced with silicone liquid gasket at time of service.

T-226 SERIES MAIN CASE

Item	Part Name	Model	Qty	Part Number	Description
122	Cone-driven shaft front bearing	E7, E26, E33, E38, E43, E45, E49, E50, E51, F, F2, F19, F20, F25, F26, F31, F32, F33, F34	-	Part not used	
		All others	1	33225	2.25" I.D.
123	Bushings-declutch shaft pilot	A1, A12, A13, A16, A22, A23, AB1, AB3, AB5, F, F2, F19, F20, F25, F26, F31, F32, F33, F34, W	-	Part not used	
		All others	1	1825-E-57	1.19" O.D., 1.0" I.D., 1.13" long.
124	Shaft-driven	A1, A12, A13, A22, A23, J, W	1	A-3880-G-319	16.73" long, 3 splines, 2 splines 1 each end 2.0"- 10T, 2.94" long, 1 spline 2.51"- 10T, 2.66" long, 1.25"- 18 thread both ends, includes item 109 (Z-936), replaces 3880-G-319, (less item 109).
		A16, AB1, AB3, AB5	1	A-3880-G-813	18.38" long, 3 splines, 1 spline 2.0"-10T, 2.69" long, 1 spline 2.0"- 10T, 2.63" long, 1 spline 2.51- 10T, 2.66" long, 1.25- 18 thread both ends, includes item 109 (Z-936), replaces 3880-G-813 (less item 109).
		B28, B30, B48, B67, B68, B70, B73, B74, B77, B78, B79, B80, CB4, CB12, CB13, HB, HB1, M, M1, M3, M4, M5, Q, Q1, Q2	1	A1-3880-H-788	16.88" long, 3 splines, 1 spline 2.0"- 10T, 3.0" long, 1 spline 2.51"- 10T, 2.66" long, 1 spline 2.16"- 10T, 2.31" long, 1.25"- 18 thread 1 end, 1.09" bore 1.88" deep 1 end, includes item 109 (Z-936) and item 123, replaces A-3880-H-788, (less item 109).
		D4, D6, G, G1, G3, K4, K7, N, N1, N2, P4, P7	1	A-3880-V-854	18.22" long, 3 splines, 1 spline 2.16- 10T, 2.31" long, 1 spline 2.51"- 10T, 2.66" long, 1 spline 2.0"- 10T, 3.0" long, 1 end 1.19" bore 1.88" deep, 1 end has 1.25"- 18 thread includes item 123.
		V	1	A-3297-F-162	14.36" long, 3 splines, 1 spline 2.0"- 10T, 2.94" long, 1 spline 2.51"- 10T, 2.66" long, 1 spline 2.25"- 10T, 2.31" long with 1.09" bore, includes item 123.
		E7, E26, E33, E38, E43, E45, E49, E50, E51, F, F2, F19, F20, F25, F26, F31, F32, F33, F34	-	Part not used	
		All others	1	A4-3880-F-292	15.3" long, 3 splines, 1 spline 2.16"- 10T, 2.31" long, 1 spline 2.51"- 10T, 2.66" long, 1 spline 2.0"- 10T, 2.94" long, 1 end with 1.19" bore 1.88" deep, 1 end with 1.25"- 18 thread, includes item 123 and item 109 (Z-936), replaces A-3880-F-292, (less item 109).
125	Cone-driven shaft rear bearing	E7, E26, E33, E38, E43, E45, E49, E50, E51, F, F2, F19, F20, F25, F26, F31, F32, F33, F34	-	Part not used	
		All others	1	59201	2.0" bore.

T-226 SERIES MAIN CASE

Item	Part Name	Model	Qty	Part Number	Description
126	Cup-driven shaft rear bearing	E7, E26, E33, E38, E43, E45, E49, E50, E51, F, F2, F19, F20, F25, F26, F31, F32, F33, F34	-	Part not used	
		All others	1	59412	4.13" O.D.
127	Shim-driven shaft bearing cap	26, 28, 41, 65, 69, 80, 83, 85, 86, 103, 118, 132, 133, 136, 138, 139, 140, 155, 156, 159, 160, 161, 163, 164, 166, 167, 168, 169, 170, 171, 173, 174, 175, 177, B76, V	4	2803-G-553	0.003", use as required, 6.13" O.D., 4.75" I.D., with 6 holes 0.47" diameter on 5.5" bolt circle diameter, 1 notch 0.5" diameter on I.D.
			3	2803-H-554	Same as G-553 except thickness 0.005", use as required.
			3	2803-J-556	Same as G-553 except thickness 0.010", use as required.
			3	2803-S-721	Same as G-553 except thickness 0.020", use as required.
		148, 149, 172, A1, A12, A13, A16, A22, A23, AB1, AB3, AB5, C3, C17, CCB4, CB9, CB12, CB13, D4, D6, G, G1, G3, R8, R10, R11, W	4	2803-G-553	0.003", use as required, 6.13" O.D., 4.75" I.D., with 6 holes 0.47" diameter on 5.5" bolt circle diameter, 1 notch 0.5" diameter on I.D.
			3	2803-H-554	Same as G-553 except thickness 0.005", use as required.
			3	2803-J-556	Same as G-553 except thickness 0.010", use as required.
			1	2803-S-721	Same as G-553 except thickness 0.020", use as required.
		176	4	2803-G-553	0.003", use as required, 6.13" O.D., 4.75" I.D., with 6 holes 0.47" diameter on 5.5" bolt circle diameter, 1 notch 0.5" diameter on I.D.
			3	2803-H-554	Same as G-553 except thickness 0.005", use as required.
			3	2803-J-556	Same as G-553 except thickness 0.010", use as required.
			2	2803-S-721	Same as G-553 except thickness 0.020", use as required.
		B28, B30, B48, B67, B68, B70, B73, B74, B77, B78, B79, B80, H, H3, HB, HB1, J, K4, K7, L, L1, L4, L8, L10, L19, L30, L35, L37, L40, L42, L43, L45, L46, L47, L48, L49, L50, L51, L52, L53, L54, M, M1, M3, M4, M5, N, N1, N2, P4, P7, Q, Q1, Q2, S, S1, T, T1, X	4	2803-G-553	0.003" use as required, 6.13" O.D., 4.75" I.D., with 6 holes 0.47" diameter on 5.5" bolt circle diameter, 1 notch 0.5" diameter on I.D.
			4	2803-H-554	Same as G-553 except thickness 0.005", use as required.
			4	2803-J-556	Same as G-553 except thickness 0.010", use as required.
		128	Cage-driven shaft rear bearing	132, 133, 148, 149, 172, 176	1
	(Continued)				

T-226 SERIES MAIN CASE

Item	Part Name	Model	Qty	Part Number	Description
128	Cage-driven shaft rear bearing	A16, AB1, AB3, AB5, B28, B30, B48, B67, B68, B70, B73, B74, B77, B78, B79, B80, CB4, CB12, CB13, HB, HB1, M, M1, M5, Q, Q1, Q2	1	A1-3838-D-212	3838-A-313 casting, 4.38" long, 1 end 6.88" O.D., 3.38" I.D., 8 holes 0.44"- 14 on 5.75" bolt circle diameter, other end 6.13" O.D., with 6 holes 0.47" diameter equal spaced on 5.5" bolt circle diameter, includes item 126 and 132 (U-1529).
		D4, D6, G, G1, G3, K4, K7, N, N1, N2	1	A-3838-U-229	4838-T-228 casting, 6.13" O.D., 3.38" I.D., 5.72" high, 6 equal spaced holes 0.47" diameter on 5.5" bolt circle diameter, other end is 6" x 6" adapter with 4 holes 0.66" diameter, also cast in arm with 0.63" diameter hole, includes item 126.
		H3, L4	1	A-3866-E-785	3866-X-1272 casting, 6 holes 0.47" diameter on 5.5" bolt circle diameter, 1.0" spotface, each hole on bolt circle has 3 holes 0.63"- 11 and 1 hole 0.5"- 13, includes item 126 and 132 (U-1529).
		P4, P7	1	A-3838-N-248	4838-T-228 casting, 6.09" O.D., 3.38" I.D., 1 end has 6 holes 0.47" diameter equal spaced on 5.5" bolt circle diameter, other end has 4 holes 0.66" diameter and 1 hole 0.5"- 13, includes item 126 and 132 (U-1529).
128	Shim-driven shaft rear bearing	V	1	A-3266-E-967	3266-F-968 casting, 6.13" O.D., 3.62" I.D., 2.25" high, 6 holes 0.47" diameter on 5.5" bolt circle diameter, 2 holes 0.38"- 16 on 5.88" bolt circle diameter, 1 cast in slot 0.5" wide, includes items 126 and 132 (U-1529).
		26, 28, 41, 65, 69, 80,83, 85, 86, 103, 118, 136, 138, 139, 140, 155, 156, 159, 160, 161, 163, 164, 166, 167, 168, 169, 170, 171, 173, 174, 175, 177, A1, A12, A13, A22, A23, B76, C3, C17, CB9, H, J, L, L1, L8, L10, L19, L30, L35, L37, L40, L42, L43, L45, L46, L47, L48, L49, L50, L51, L52, L53, L54, R8, R10, R11, S, S1, T, T1, W, X	1	A-3838-X-76	Same as A2-3838-X-76. Use A2 for service.
129	Stud-driven shaft rear bearing cage	A1, A12, A13, A16, A22, A23, W	6	S-279-2	0.44"- 14, 1.12" long, 0.62" across flats, grade 8.
		T, T1	6	S-2710-2	0.44"- 14, 1.25" long, 0.62" across flats, grade 8.
		V	6	4X-1757	2.0" long, 0.44"- 14/ 0.44"- 20, grade 8.
		E7, E26, E33, E38, E43, E45, E49, E50, E51, F, F2, F19, F20, F25, F26, F31, F32, F33, F34	-	Part not used	
		All others	6	SN-714-1	0.44"- 14/ 0.44"- 20, 1.75" long, grade 8.

T-226 SERIES MAIN CASE

Item	Part Name	Model	Qty	Part Number	Description
130	Lockwasher-driven shaft rear bearing cage	E7, E26, E33, E38, E43, E45, E49, E50, E51, F, F2, F19, F20, F25, F26, F31, F32, F33, F34	-	Part not used	
		All others	6	WALM7-2	0.77" O.D., 0.46" I.D., 0.11" thick.
131	Nut-driven shaft rear bearing cage	A1, A12, A13, A16, A22, A23, E7, E26, E33, E38, E43, E45, E49, E50, E51, F, F2, F19, F20, F25, F26, F31, F32, F33, F34, T, T1, W	-	Part not used	
		L1, L4, X	6	NL-17-1	Locknut, 0.44"- 20, 0.38" high, 0.68" across flats, grade 8.
		All others	6	N-17-1	0.44"- 20, 0.38" high, 0.68" across flats, grade 8.
132	Oil Seal-driven shaft rear	E7, E26, E33, E38, E43, E45, E49, E50, E51, F, F2, F19, F20, F25, F26, F31, F32, F33, F34	-	Part not used	
		V	1	A-1205-V-1894	4.0" O.D., 2.94" I.D., 0.64" thick, 3 lip seal with 2 springs.
		All others	1	A-1205-U-1529	4.0" O.D., 2.94" I.D., 0.45" wide, single lip with spring and dirt lip, replaces A-1805-V-152, (0.63" wide, 2.03" shaft I.D.).
133	Spacer-driven shaft rear bearing	A16, AB1, AB3, AB5, B28, B30, B48, B67, B68, B70, B73, B74, B76, B77, B78, B79, B80, CB4, CB9, CB12, CB13, HB, HB1, M, M1, M5, Q, Q1, Q2	1	1844-L-532	2.44" O.D., 2.02" I.D., 1.56" long.
		D4, D6, G, G1, G3, K4, K7, N, N1, N2, P4, P7	1	1844-N-586	2.44" O.D., 2.02" I.D., 2.86" long.
134	Spacer-driven shaft rear	A13, A16, R8, R10, W	1	1844-R-278	2.94" O.D., 2.0" I.D., 3.0" long.
		A23	1	1244-E-1747	3.0" O.D., 2.0" I.D., 2.92" long, 1 end has 2.94" O.D., 1.38" long.
135	Deflector-driven shaft rear	80, 83, 103, 118, 136, 159, 172, 175, 176, 177, A12, L45	1	DEFR47-5	4.63" O.D., 2.94" I.D., 0.31" long.
		85, 132, 133, 148, 149, 156, 160, 161, 169, 173, L30, L40, L43, L46, L47, L48, L50, L51, L52, L53, L54, R10, R11, S1,	1	2847-Z-312	4.81" O.D., 2.95" I.D., 0.81" long, 0.05" thick.
		139, 164, 171	1	2847-C-367	4.75" O.D., 2.94" I.D., 0.69" long, 0.05" thick.

T-226 SERIES MAIN CASE

Item	Part Name	Model	Qty	Part Number	Description
136	Flange/Yoke-driven shaft rear	80, 83, 103, 177	1	A1-3280-C-1979	1600 flange, 3.63" end hub to flange face, 2.0"- 10T spline, 8 holes 0.38" diameter equal spaced on 6.12" bolt circle diameter, includes item 135 (N-716) assembled 1.91" from hub end.
		118, 136, 159, 172, 175, 176, A12	1	A1-3280-D-1980	16N yoke, 5.0" end hub to center cross assy., 2.0"- 10T spline, includes item 135 (N-716) assembled.
		85, 173	1	A-3897-T-670	7C, 4.25" end hub to center cross assy., 2.0"- 10T spline, 4 holes 0.47" diameter in ears, includes item 135 (Z-312).
		132, 133, 148, 149	1	A-3260-L-90	5 WCS flange, 4.31" long end hub to end flange, 2.0"- 10T spline, 8 holes 0.4" diameter on 7.25" bolt circle diameter, includes item 135 (Z-312).
		139, 164, 171	1	A1-3897-Y-675	17 series yoke, 5.63" end hub to center cross assy., 2.0"- 10T spline includes item 135 (Z-312) fitted.
		156, 160, 161	1	A1-3280-C-3201	72N yoke, 4.25" end hub to center cross assy., 2.0"- 10T spline 4 holes 0.5"- 20, includes item 135 (Z-312), tack welded at yoke shoulder.
		169	1	A-3897-F-318	1710 flange, 3.69" end hub to center cross assy., 2.0"- 10T spline, 8 holes 0.38" diameter equal spaced on 7.25" bolt circle diameter, includes item 135 (Z-312), 2.0" from end hub.
		B76	1	3260-T-176	17N cross forging , 5.75" long/wide with 4 journals 1.62" diameter.
		L30	1	A-3897-F-3438	82N yoke, 4.75" end hub to center cross assy., 2.0"- 10T spline, 4 holes 0.5"- 20 in ears, includes item 135 (Z-312), 1.94" from hub end.
		L40, L46, L47, L51, L52, L53, R11	1	A-3260-Q-1395	17N yoke, 5.63" end hub to center cross assy., 2.0"- 10T spline, includes item 135 (Z-312).
		L43, L50, R10, S1	1	A-3897-C-705	17N yoke, 5.06" end hub to center cross assy., 2.0"- 10T spline, includes item 135 (Z-312).
		L45	1	A1-3260-Y-1039	17 series yoke, 5.06" end hub to center cross assy., 2.0"- 10T spline, includes item 135 (N-716).
		L48	1	A-3280-P-6490	18N yoke, 5.81" end to hub to center cross assy., 2.0"- 10T spline, includes item 135 (Z-312).
		L54	1	A-3280-Z-1456	62N yoke, 4.25" end hub to center cross assy., 2.0"- 10T spline, 4 holes 0.38"- 24 in yoke ears, includes item 135 (Z-312).
		V	1	3280-N-8074	72N yoke, 4.0" end hub to center cross assy., 2.0"- 10T spline, 4 holes 0.5"- 20 spline.
137	Washer-rear driven shaft nut	A23	1	1229-Q-277	2.37" O.D., 1.28" I.D., 0.12" thick.

T-226 SERIES MAIN CASE

Item	Part Name	Model	Qty	Part Number	Description
138	Locknut-driven shaft	26, 28, 41, 65, 69, 80, 83, 85, 86, 103, 118, 132, 133, 136, 138, 139, 140, 148, 149, 155, 156, 159, 160, 161, 163, 164, 166, 167, 168, 169, 170, 171 172, 173, 174, 175, 176, 177, A1, A12, A13, A16, A22, A23, B76, C3, C17, CB4, CB9, CB12, CB13, H, H3, HB, HB1, J, L, L1, L4, L8, L10, L19, L30, L35, L37, L40, L42, L43, L45, L46, L47, L48, L49, L50, L51, L52, L53, L54, Q, Q1, Q2, R8, R10, R11, S, S1, T, T1, W, X	1	1227-Z-936	1.25"- 18, 0.62" high, 1.60" across flats.
		N, N1, N2	1	1227-B-496	1.25"- 18, 0.62" high, 6 slots, 2.12" across flats, grade 8.
139	Cotter-rear driven shaft nut	N, N1, N2	1	K-2416	0.13" diameter, 2.0" long.

T-226 SERIES DIFFERENTIAL

T-226 Transfer Case Models with Differential

T-226-E-7	T-226-F2
T-226-E26	T-226-F19
T-226-E33	T-226-F20
T-226-E38	T-226-F25
T-226-E43	T-226-F26
T-226-E45	T-226-F31
T-226-E49	T-226-F32
T-226-E50	T-226-F33
T-226-E51	T-226-F34
T-226-F	

ITEM	PART NAME	MODEL	QTY	PART NUMBER	DESCRIPTION
140	Cotter-differential output front	F, F2, F19, F20, F25	1	K-2416	0.13" diameter, 2.0" long.
141	Nut-differential output front	F, F2, F19, F20, F25	1	1227-B-496	1.25"- 18, 0.62" high, 6 slots, 2.12" across flats, grade 8.
		F32	1	1227-Z-936	1.25"- 18, 0.62" high, 1.6" across flats.
142	Flange/Yoke-differential output front	E49, F20	1	A1-3897-P-692	16N yoke, 5.63" end hub to center cross assy., 2.0"- 10T spline, includes item 143 tack welded at shoulder.
		F19	1	A1-3897-S-331	1550 flange, 4.63" end hub to flange face, 2.0"- 10T spline, 4 holes 0.51" diameter on 4.75" bolt circle diameter, includes item 143.
		F33, F34	1	A-3897-Y-675	17N yoke, 5.63" long from end hub to center cross assy., 2.0"- 10T, includes item 143.
143	Deflector-differential output front	E49, F19, F20, F33, F34	1	2847-Z-312	4.81" O.D., 2.95" I.D., 0.81" long, 0.05" thick, included in item 142.
144	Oil Seal-differential output shaft rear bearing	F, F2, F19, F20, F25, F26, F31, F32, F33, F34	1	A-1205-U-1529	4.0" O.D., 2.94" shaft, 0.45" wide, double lip, double case, with spring, replaces A-1805-A-261, (2.75" I.D.).
145	Spacer-declutch bearing inner	E7, E26, E33, E38, E43, E45, E49, E50	1	1844-R-590	2.5" O.D., 2.19" I.D., 0.28" long.
146	Snap Ring-differential output shaft front bearing cage	All**	1	1854-C-315	Fits 4.06" diameter groove, 0.22" wide, 0.09" thick, internal snap ring.
147	Bearing-differential output shaft front	All**	1	1228-V-204	Ball bearing, 3.94" O.D., 2.17" bore, 0.82" thick.
148	Capscrew-differential output front bearing cap	F, F2, F19, F20, F25, F26, F31, F32, F33, F34	6	S-2720-1	0.44"- 14, 2.5" long, 0.62" across flats, grade 8.
149	Lockwasher-differential output front bearing cap	F, F2, F19, F20, F25, F26, F31, F32, F33, F34	6	WA-17	0.77" O.D., 0.46" I.D., 0.11" thick.

** For models see list above.

T-226 SERIES DIFFERENTIAL

ITEM	PART NAME	MODEL	QTY	PART NUMBER	DESCRIPTION
150	Cage-differential output shaft front bearing	E7, E26, E33, E38, E43, E45, E49, E50, E51	1	3826-M-299	3826-Y-363 casting, 5.87" O.D., 3.94" I.D., 1.82" wide, 6 holes 0.47" diameter on 5.5" bolt circle diameter and 1 hole 0.44" diameter on 4.87" bolt circle diameter, 1.69" deep.
		All others**	1	3838-V-230	3838-G-319 casting, 6.13" O.D., 3.94" I.D., 2.33" thick, 6 holes 0.47" on 5.5" bolt circle diameter, 2 slots 0.5" wide on I.D.
151	Snap Ring-differential output shaft front bearing cage	F2, F19, F26, F31, F33, F34	1	Part not used	
		All others**	1	1854-C-315	Fits 4.06" diameter groove, 0.22" wide, 0.09" thick.
152	Gasket-differential output front bearing cage	F2, F19, F32	-	2297-A-7021	Silicone gasket, use as required.*
153	Shim-differential output front	All**	4	2803-G-553	0.003", use as required, 6.13" O.D., 4.75" I.D., with 6 holes 0.47" diameter on 5.5" bolt circle diameter, 1 notch 0.5" diameter on O.D.
			4	2803-H-554	Same as G-553 except thickness 0.005", use as required.
			4	2803-J-556	Same as G-553 except thickness 0.010", use as required.
154	Snap Ring-differential output shaft front bearing	All**	1	1854-W-257	2.0" I.D., 2.38" O.D., 0.09" thick, external snap ring.
155	Shaft-differential output front	E7, E26, E33, E38, E43, E45, E49, E50, E51	1	A-3880-X-856	18.56" long, 2 splines, 1 end has 2.16"- 10T spline, 2.31" long and 1.41" counterbore 1.63" deep, 1 end has 2.12"- 22T spline 2.0" long, includes item 123.
		All others**	1	3880-Y-857	19.88" long, 2 splines, 1 end 2.0"- 10T spline, 2.84" long, other end 2.12"- 22T spline, 2.0" long.
156	Cup-differential output shaft front bearing	All**	1	33472	4.72" O.D.
157	Cone-differential output shaft front bearing	All**	1	33287	2.88" bore.
158	Shaft-differential output gear	All**	1	3880-Z-858	11.66" long, 2.19" bore with 2 splines, 1 spline 3.3"- 32T, 2.41" long, 1 spline 3.0"- 29T, 2.53" long, 1 end of shaft has 2.24" I.D., counter bore.
159	Gear-differential output	E38, E45, E50, E51, F32	1	3892-H-4610	31T, helical, R.H., 6.7" O.D., 3.38" gear face, with 32T internal spline.
		All others**	1	3892-H-2114	31T, helical, R.H., 6.7" O.D., 2.88" gear face, with 32T internal spline.
160	Snap Ring-differential output gear inner lock	All**	1	1854-E-317	Fits into 3.43" diameter groove, 0.19" wide, 0.19" thick, no eyes.
161	Cone-differential output shaft rear bearing	All**	1	42688	3.0" bore.
162	Cup-differential output shaft rear bearing	All**	1	42620	5.25" O.D.
163	Gasket-differential lock shift cover	All**	-	2297-A-7021	Silicone gasket, use as required.*
164	Plug-differential housing oil drain	E51, F32	1	1850-T-150	magnetic, 0.75"- 14, 1.31" high, 0.62" long, female square head socket.
		All others	1	P-112	0.75"- 14, N.P.T.F., male square head, non-magnetic.

* All preformed gaskets are replaced with silicone liquid gasket at time of service.

** For models see list on page 49.

T-226 SERIES DIFFERENTIAL

ITEM	PART NAME	MODEL	QTY	PART NUMBER	DESCRIPTION
165	Housing-differential	All**	1	3875-V-568	5875-U-567 casting, 2 bore housing, large bolt 7 holes 0.44"- 14 and 1 hole 0.47" diameter on 9.63" bolt circle diameter, small bore 5 holes 0.47" diameter on 5.0" bolt circle diameter.
166	Capscrew-differential housing cover	All**	1	S-2710-2	0.44"- 14, 1.25" long, 0.62" across flats, grade 8.
167	Lockwasher-differential housing cover	All**	1	WALM7-2	0.77 O.D., 0.46" I.D., 0.11" thick.
168	Lockwasher-differential housing to case	All**	5	WALM7-2	0.77 O.D., 0.46" I.D., 0.11" thick.
169	Capscrew-differential housing to case	All**	5	S-2710-2	0.44"- 14, 1.25" long, 0.62" across flats, grade 8.
170	Lockwasher-differential housing to case	All**	8	WA-18	0.86" O.D., 0.52" I.D., 0.13" thick.
171	Capscrew-differential housing to case	All**	8	S-2813-2	0.5"- 13, 1.62" long, 0.74" across flats, grade 8.
172	Bolt-differential case	All**	12	S-1827-D2	0.5"- 20, 3.38" long, 1 hole drilled on head, 0.74" across flats, grade 8.
173	Lockwire-differential bolt	All**	1	LW-1622	16 gage, 22.0" long.
174	Washer-differential case bolt	All**	12	1229-C-1511	0.88" O.D., 0.53" I.D., 0.09" thick.
175	Slinger-differential case oil	All**	1	3905-U-73	7.38" O.D., 4.69" I.D., 2.38" long, 16 gage stamping with 12 holes 0.53" diameter on 6.5" bolt circle diameter.
176	Case-differential	All**	1	3835-K-401	7.31" O.D., 3.13" I.D., 5.66" long, with 29 internal teeth, 2.51" long.
177	Washer-differential side gear	All**	1	1229-T-1034	4.06" O.D., 2.64" I.D., 0.06" thick, with 4 holes 0.25" diameter on 3.34" bolt circle diameter, with 2 grooves 3.41" diameter on offset centers.
178	Gear-differential side	E7, E26, E33, E38, F, F2, F19, F20, F25	1	2234-W-283	16T, bevel, 5.1" O.D., with 22T internal spline.
		All others**	1	2234-X-700	16T, bevel, 5.16" O.D., with 22T internal spline.
179	Spider-differential	All**	1	3278-H-86	3278-G-85 forging, 4 legs 1.06" diameter 2.81" O.D.
180	Washer-differential pinion	All**	4	1229-R-1032	2.41" O.D., 1.07" I.D., 0.06" thick, with spherical radius.
181	Pinion-differential	E7, E26, E33, E38, F, F2, F19, F20, F25	4	2233-Y-103	9T, bevel, 3.36" O.D., 1.34" overall width, with 1.07" I.D., replaces 2233-H-112, (1.07" burnished I.D. and 1.15" I.D. internal groove).
		All others**	4	2233-U-151	9T, 3.33" O.D., 1.36" overall width with 1.07" I.D.
182	Gear-differential side	E7, E26, E33, E38, F, F2, F19, F20, F25	1	2234-W-283	16T, bevel, 5.1" O.D., with 22T internal spline.
		All others**	1	2234-X-700	16T, bevel, 5.16" O.D., with 22T internal spline.
183	Washer-differential side gear	All**	1	1229-T-1034	4.06" O.D., 2.64" I.D., 0.06" thick with 4 holes 0.25" diameter on 3.34" bolt circle diameter, with 2 grooves 3.41" diameter on offset centers.
184	Snap Ring-differential side gear retainer	All**	1	1854-W-257	2.38" O.D., 2.0" I.D., 0.09" thick, external snap ring.

** For models see list on page 49.

T-226 SERIES DIFFERENTIAL

ITEM	PART NAME	MODEL	QTY	PART NUMBER	DESCRIPTION
185	Case-differential	E38	1	A1-3835-E-395	Same as A-3835-E-395 except includes items 172, 173, 174, 175, 177, 178, (X-700), 179, 180, 181, (U-151), 182.
		E45, E50, E51, F32	1	A2-3835-E-395	Same as A-3835-E-395 except includes items 172, 173, 174, 175, 177, 178, (X-700), 179, 180, 181, (U-151), 182.
		All others**	1	A-3835-E-395	3835-E-395 casting 3.91" long, 23T internal on 3.29" O.D., 0.59" long.
186	Clutch-differential lock sliding	All**	1	2848-U-177	23T, spur, 3.37" O.D., with shift groove, 22T internal spline.
187	Gasket-differential housing	All others**	-	2297-A-7021	Silicone gasket, use as required.*
188	Cover-differential housing	All**	1	A-3876-D-368	5876-C-367 casting, 7.56" long with 0.88" diameter shift shaft bore, 1 end has 7 holes 0.63"- 11 on 6.25" bolt circle diameter, other end has 7 holes 0.47" diameter on 9.63" bolt circle diameter, one 0.44"- 14, hole 5.38" from center bore, includes item 192 and 202.
189	Lockwasher-differential housing cover	All**	7	WALM7-2	0.77" O.D., 0.46" I.D., 0.11" thick.
190	Capscrew-differential housing cover	All**	7	S-2714-2	0.44"- 14, 1.75" long, 0.62" across flats, grade 8.
191	Shaft-differential lock shift	All**	1	2843-H-476	6069" long, 0.87" body diameter, 0.5"- 20 hole 1.0" deep 1 end only.
192	Oil Seal-differential lock shift shaft	All**	1	A-1805-S-279	1.5" O.D., 0.82" I.D., 0.35" wide, single lip with spring.
193	Fork-differential lock shift	All**	1	3897-P-1992	3897-H-3128 casting, 8.41" long center fork tangs to center, 0.87" diameter shift shaft hole, 2.62" dimension between inside fork tangs, 0.44"- 20 setscrew hole.
194	Screw-differential lock shift fork lock	All**	1	26X-96	1.38" long, 0.44"- 20, square head, 2 holes in head.
195	Lockwire-differential lock shift fork screw	All**	1	LW-169	16 gage, 9.0" long.
196	Gasket-differential lock shift cover	All**	-	2297-A-7021	Silicone gasket, use as required.*
197	Ball-differential lock shift lock	All**	1	1898-E-57	0.44" diameter ball.
198	Spring-differential lock shift lock	E38, E45, E50, E51, F32	1	2258-D-706	1.38" free length, 0.43" O.D., 8 active coils.
		All others**	1	2858-A-1	13 coils, 1.88" free length.
199	Cover-differential lock shift	All**	1	3866-H-892	3.88" x 5.25" x 0.19" plate with 6 thru holes.
200	Lockwasher-differential lock shift cover	All**	6	WA-16	0.67" O.D., 0.32" I.D., 0.09" thick.
201	Capscrew-differential lock shift cover	All**	6	S-267-2	0.38"- 16, 0.88" long, 0.56" across flats, grade 8.
202	Plug-differential lock shift shaft bore expansion	All**	1	PW-218	1.13" O.D., 0.08" thick.
203	Snap Ring-output shaft rear bearing cage	All**	1	1854-C-315	Fits 4.06" diameter groove, 0.22" wide, 0.09" thick.
204	Shaft-differential output rear	All**	1	3880-W-855	12.25" long, 3 splines, 2 sets of 2.13" 22T splines separated by 0.13" gap (total 4.75" long), 1 spline 2.0"- 10T, 2.64" long, opposite end 6 flats equal spaced.
205	Bearing-rear output shaft	All**	1	1228-V-204	Ball bearing, 3.94" O.D., 2.17" bore, 0.82" thick.

* All preformed gaskets are replaced with silicone liquid gasket at time of service.

** For models see list on page 49.

T-226 SERIES DIFFERENTIAL

ITEM	PART NAME	MODEL	QTY	PART NUMBER	DESCRIPTION
206	Oil Seal-output shaft rear bearing	F, F20, F25, F26, F33	1	A-1805-T-488	3.62" O.D., 2.68" free lip I.D., 0.46" wide, double lip with 1 spring.
		All others**	1	A-1205-U-1529	4.0" O.D., 2.94" shaft, 0.45" wide, double lip, double case, with spring, replaces A-1805-A-261, (2.75" I.D.).
207	Gasket-rear output bearing cap	E7, E26, E33, E38, E43, E45, E49, E50, E51, F, F2, F19, F20, F25, F26, F32, F33	-	1199-T-3842	Silicone gasket, use as required.*
208	Cap-rear output shaft bearing	E7, E26, E33, E43, E49, F2, F19, F31, F34	1	A-3838-R-252	3911-P-354 casting, 2.06" long, 3.38" bore, 7 holes 0.66" diameter on 6.25" bolt circle diameter, includes item 206 (U-1529).
		E38, E45, E50, E51, F32	1	A1-3838-R-252	Same as A-3838-R-252, includes item 206 (U-1529).
209	Lockwasher-rear output shaft cap	E7, E26, E33, E38, E43, E45, E49, E50, E51, F, F2, F19, F26, F32	7	WA-110	1.05" O.D., 0.65" I.D., 0.16" thick.
210	Capscrew-rear output shaft bearing cap	E7, E26, E33, E38, E43, E45, E49, E50, E51, F, F2, F19, F26, F32	7	S-21014-1	0.63"- 11, 1.75" long, 0.93" across flats, grade 8.
211	Deflector-rear output	E33, E49, F34	1	2847-Z-312	4.81" O.D., 2.95" I.D., 0.81" long, 0.05" thick, included in item 212.
212	Flange/Yoke-rear output	E33, F34	1	A-3897-Y-675	17N, yoke, 5.63" long from end hub to center cross assy., 2.0"- 10T spline, includes item 211.
		E49	1	A1-3897-P-692	16N, yoke, 5.63" end hub to center cross assy., 2.0"- 10T spline, includes item 211 tack welded at shoulder.
		F19	1	3897-B-1718	5WCS flange, 4.31" long from end hub to mounting face, 2.0"- 10T spline, 8 holes 0.38" diameter equal spaced on 7.25" bolt circle diameter, 3.0" long.
213	Locknut-rear output shaft	F32	1	1227-Z-936	1.25"- 18, 0.63" high, 1.63" across flats.
214	Cotter-differential output rear	-	-	K-2416	Not used on T-226 models in this book.

* All preformed gaskets are replaced with silicone liquid gasket at time of service.

** For models see list on page 49.

T-226 SERIES DCM BRAKE

T-226 Transfer Case Models with DCM Brake

T-226-D4	T-226-G
T-226-D6	T-226-G1
T-226-F	T-226-G3
T-226-F20	T-226-K4
T-226-F25	T-226-N
T-226-F26	T-226-P4
T-226-F33	T-226-P7

ITEM	PART NAME	MODEL	QTY	PART NUMBER	DESCRIPTION
215	Nut-brake assy. to cage bolt	All**	4	N-110-1	0.63"- 18, 0.55" high, 0.93" across flats, grade 8.
216	Lockwasher-brake assy. bolt	All**	4	WA-110	1.05" O.D., 0.65" I.D., 0.16" thick.
217	Spider-brake	F, F20, F25, F26, F33	1	A-3911-G-319	3911-N-354 casting, 5.0" pilot diameter, 8 holes 0.53" diameter on 6.0" bolt circle diameter, 1 hole 0.5" diameter 3.38" radius from center pilot hole.
218	Backing Plate Assy.	All**	1	A-3736-K-375	8.37" long between 2 holes 0.7" diameter, 5.5" pilot diameter hole, 4 holes 0.67" diameter, 1 hole 1.06" diameter.
219	Bolt-brake assy. to brake spider	F, F20, F25, F26, F33	4	10X-674	0.63"- 18, 1.94" long, 0.94" across flats, grade 8.
		All others**	4	10X-803	0.63"- 18, 2.31" long, 0.94" across flats, grade 8.
220, 221, 222	Brake Shoe and Lining Assy.	D4, D6, F25, P4, P7	2	A3-3722-E-421	4.0" wide assy.
		All others**	2	A2-3722-F-422	5.0" wide assy.
223	Spring-return	All**	4	2758-A-53	11 coils, 0.75" diameter, 2.75" long.
224	Locknut-brake lever	All**	1	1779-Z-260	0.56"- 12, 1.01" across flats.
225	Washer-brake lever	All**	1	WA-39	1.19" O.D., 0.59" I.D., 0.09" thick.
226	Lever-brake	F25	1	372-K-219	372-D-212 casting, bent lever, 6.75" long center camshaft hole to 0.56" diameter hole, lever bent 6 degrees from horizontal.
		D4, D6, G, G1, G3, K4, N, P4, P7	1	372-E-213	Same as K-219 except 7.12" long and lever horizontal.
227	Camshaft	All**	1	2710-U-151	2710-X-154 forging, 3.17" long, 32 serrations 1 end, 0.56"- 12 thread 1 end.
228	Strut Assy.	All**	1	A-3787-N-14	10.75" long, 0.22" thick, 1 hole 5.40" diameter, 1 hole 0.64" diameter.
229	Bolt-brake drum to flange	All**	8	10X-507Z	2.03" long, 0.56" across flats, 0.38"- 24, 27 serrations on body diameter, grade 8, included in item 231.

**For models see list above.

T-226 SERIES DCM BRAKE

ITEM	PART NAME	MODEL	QTY	PART NUMBER	DESCRIPTION
230	Flange-companion	F25	1	3260-C-133	5WCS flange, 6.13" long end hub to flange mounting face, 2.0"- 10T spline, 8 holes 0.38" diameter on 7.25" bolt circle diameter.
		F, F20, F26, F33	1	3897-N-1990	1700 series flange, 6.13" long end hub to flange mounting face, 2.0"- 10T spline, 8 holes 0.38" diameter on 7.25" bolt circle diameter, included on item 231 (T-384 & U-411).
		All others**	1	3897-B-1718	5WCS flange, 4.31" long end hub to flange mounting face, 2.0"- 10T spline, 8 holes 0.38" diameter on 7.25" bolt circle diameter, included on item 231 (J-374 & U-411).
231	Drum-brake	D4, D6	1	A-3819-H-398	3819-P-510 casting, 6.38" bore, 8 holes 0.38" diameter equal spaced on 7.25" bolt circle diameter, has 0.94" long squealer band on O.D., includes items 229, 230, 232, and 233.
		F, F26, F33	1	A-3819-T-384	3819-P-510 casting, 6.38" bore, 8 holes 0.39" diameter equal spaced on 7.25" bolt circle diameter, has 1.44" long squealer band on O.D., includes items 229 (N-1990), 230, 232, 233, and 1844-E-499 (8 pieces).
		F20	1	A-3219-Z-4108	Part no longer available.
		F25	1	3719-D-134	3719-A-131 stamping, 6.44" bore, 8 holes 0.41" diameter equal spaced on 7.25" bolt circle diameter, 0.31" thick drum, no squealer band on O.D.
		G, G1, G3, G4, N	1	A-3819-J-374	3819-P-510 casting, 6.38" bore, 8 holes 0.38" equal spaced on 7.25" bolt circle diameter, 1.44" long squealer band on O.D., includes items 229, 230, 232, and 233.
		P4, P7	1	A-3819-U-411	3819-T-410 casting, 6.38" bore, 8 holes 0.38" diameter equal spaced on 7.25" bolt circle diameter, 0.88" long squealer band on O.D., includes items 229, 230, 232, and 233.
232	Lockwasher-brake drum to flange	All**	8	WA-16	0.67" O.D., 0.32" I.D., 0.09" thick, included in item 231.
233	Nut-brake drum to flange	All**	8	N-16-1	0.44"- 20, 0.42" high, 0.68" across flats, included in item 231.
234	Nut-driven shaft	All**	1	1227-B-496	1.25"- 18, 0.62" high, 6 slots, 2.12" across flats, grade 8.
235	Cotter-driven shaft	All**	1	K-2416	0.13" diameter, 2.0" long.

**For models see list on page 54.

T-226 SERIES DLM BRAKE

T-226 Transfer Case Models with DLM Brake

T-226-AB1	T-226-B79
T-226-AB3	T-226-B80
T-226-AB5	T-226-CB4
T-226-B28	T-226-CB12
T-226-B30	T-226-HB
T-226-B48	T-226-HB1
T-226-B67	T-226-M
T-226-B68	T-226-M1
T-226-B70	T-226-M3
T-226-B73	T-226-M4
T-226-B74	T-226-M5
T-226-B76	T-226-Q
T-226-B77	T-226-Q1
T-226-B78	T-226-Q2

ITEM	PART NAME	MODEL	QTY	PART NUMBER	DESCRIPTION
236	Backing Plate Assy.	All**	1	A6-3736-P-146	4736-Z-788 stamping, 8 holes 0.47" diameter on 5.75" bolt circle diameter, 4.38" diameter pilot bore.
237	Lockwasher-brake assy. to cage	All**	8	WALM7-2	0.77" O.D., 0.46" I.D., 0.11" thick.
238	Capscrew-brake to case	All**	8	S-278-2	0.44"- 14, 1.0" long, 0.62" across flats, grade 8.
239	Lever-brake	All**	1	372-R-148	0.31" thick, 9.75" from center lever pilot hole to 0.52" diameter hole.
240	Roller-brake	All**	1	1779-P-68	1.31" O.D., 0.76" I.D., 0.31" long.
241	Brake Shoe and Lining Assy.	All**	2	A8-3722-X-180	
242	Spring-return	All**	2	2758-S-19	18 coils, 0.81" O.D., 0.56" I.D., 4.0" free length, hooks both ends.
243, 244	Lining-brake shoe and rivets	All**	1	2000-R-1370	Lining and rivet kit. Includes 2 pieces of lining and 28 rivets.
244	Rivet-lining to shoe	All**	28	RV-875	Included in Item 243
245	Bolt-brake drum to flange	HB1	12	10X-652	2.03" long, 0.63" across flats, 0.44"- 20, 30 serrations on body, grade 8.
		All others**	8	10X-520	1.84" long, 0.56" across flats, 0.38"- 24, 27 serrations on body, grade 8.
246	Drum-brake	AB5, B74, B76, CB12, M, M1, M3, M4, M5, Q, Q1, Q2	1	3719-M-91	3719-D-30 stamping, 6.38" pilot diameter, 8 holes 0.39" diameter on 7.25" bolt circle diameter.
		HB1	1	3719-G-137	3719-D-30 stamping, 6.38" pilot diameter, 12 holes 0.44" diameter on 7.25" bolt circle diameter.
		All others**	1	3719-W-75	3719-D-30 stamping, 5.31" pilot diameter, 8 holes 0.39" diameter on 6.13" bolt circle diameter, 0.24" thick.

**For models see list above.

T-226 SERIES DLM BRAKE

ITEM	PART NAME	MODEL	QTY	PART NUMBER	DESCRIPTION
247	Flange-brake mounting	AB5, B74, B76, CB12, M, M1, M3, M4, M5, Q, Q1, Q2	1	3897-B-1718	5WCS flange, 4.31" end hub to end flange, 2.0"- 10T spline, 8 holes 0.38" diameter equal spaced on 7.25" bolt circle diameter.
		HB1	1	3897-S-1995	1800 flange, 4.31" end hub to end flange, 2.0"- 10T spline, 12 holes 0.44" diameter equal spaced on 7.25" bolt circle diameter.
		All others**	1	3WCS32-48	1600 flange, 4.38" end hub to end flange, 2.0"- 10T spline, 8 holes 0.39" diameter equal spaced on 6.13" bolt circle diameter.
248	Flange-rear output	Q1, Q2	1	3897-Y-2235	8.0" O.D., 2.5" I.D., 0.44" thick, 8 holes 0.38" diameter equal spaced on 7.25" bolt circle diameter, 4 holes 0.47" diameter in flange ears.
249	Lockwasher-brake drum to flange	HB1	12	WALM7-2	0.77" O.D., 0.46" I.D., 0.11" thick.
		All others**	8	WA-16	0.67" O.D., 0.32" I.D., 0.09" thick.
250	Nut-brake drum to flange bolt	HB1	12	N-17-1	0.44"- 20, 0.37" high, 0.68" across flats, grade 8.
		All others**	8	N-16-1	0.38"- 24, 0.33" high, 0.56" across flats, grade 8.
251	Nut-driven shaft	B28, B30, B48, B67, B68, B70, B73, B77, B78, CB4, M, M1, M3, M4, M5	1	1227-Z-936	1.25"- 18, 0.62" high, 1.6" across flats.

**For models see list on page 56.

T-226 SERIES DECLUTCH

T-226 Transfer Case Models with Declutch

T-226-26	T-226-155	T-226-B28	T-226-E43	T-226-L19	T-226-M3
T-226-28	T-226-156	T-226-B30	T-226-E45	T-226-L30	T-226-M4
T-226-41	T-226-159	T-226-B48	T-226-E49	T-226-L35	T-226-M5
T-226-65	T-226-160	T-226-B67	T-226-E50	T-226-L37	T-226-P4
T-226-69	T-226-161	T-226-B68	T-226-E51	T-226-L40	T-226-P7
T-226-80	T-226-163	T-226-B70	T-226-G	T-226-L42	T-226-Q
T-226-83	T-226-164	T-226-B73	T-226-G1	T-226-L43	T-226-Q1
T-226-85	T-226-166	T-226-B74	T-226-G3	T-226-L45	T-226-Q2
T-226-86	T-226-167	T-226-B76	T-226-H	T-226-L46	T-226-R8
T-226-103	T-226-168	T-226-B77	T-226-H3	T-226-L47	T-226-R10
T-226-118	T-226-169	T-226-B78	T-226-HB	T-226-L48	T-226-R11
T-226-132	T-226-170	T-226-B79	T-226-HB1	T-226-L49	T-226-S
T-226-133	T-226-171	T-226-B80	T-226-K4	T-226-L50	T-226-S1
T-226-136	T-226-172	T-226-D4	T-226-K7	T-226-L51	T-226-V
T-226-138	T-226-173	T-226-D6	T-226-L	T-226-L52	T-226-X
T-226-139	T-226-174	T-226-E7	T-226-L1	T-226-L53	
T-226-140	T-226-175	T-226-E26	T-226-L4	T-226-L54	
T-226-148	T-226-176	T-226-E33	T-226-L8	T-226-M	
T-226-149	T-226-177	T-226-E38	T-226-L10	T-226-M1	

ITEM	PART NAME	MODEL	QTY	PART NUMBER	DESCRIPTION
252	Cotter-front declutch	132, 133, 148, 149, 172, 174, 176, E38, E45, E50, X	1	Part not used	
		All others**	1	K-2416	0.13" diameter, 2.0" long.
253	Nut-front declutch	132, 133, 148, 149, 172, 174, 176, E38, E45, E50, X	1	1227-Z-936	1.25"- 18, 0.62" high, 1.60" across flats.
		All others**	1	1227-B-496	1.25"- 18, 0.62" high, 6 slots, 2.12" across flats, grade 8.
254	Flange/Yoke-front output shaft	80, 83, 103, 148, 149, 177, HB1	1	A-3280-C-1979	1600 flange, 3.63" end hub to center cross assy. 2.0"- 10T spline, 8 holes equal spaced 0.38" diameter on 6.12" diameter, includes item 255.
		85, 173, M5, Q1, Q2	1	A-3897-T-670	7C yoke, 4.25" end hub to center cross assy., 2.0"- 10T spline, 4 holes 0.47" diameter in ears, includes item 255 assembled 2.06" from hub end.
		118, 136, 159, 172, 175, 176, D6, G1, L43, L50, L53	1	A-3280-D-1980	16N yoke, 5.0" end hub to center cross assy., 2.0"- 10T spline, includes item 255.
		132, 133, E38, E45, E50	1	A-3260-L-90	5WCS flange, 4.31" long end hub to center cross assy., 2.0"- 10T spline, 8.0" O.D., 8 equal spaced holes 0.4" diameter, includes item 255.
		139, L30, R8	1	A-3280-C-3201	72N yoke, 4.25" end hub to center cross assy., 2.0"- 10T spline, 4 holes 0.50"- 20, includes item 255.
	(Continued)				

**For models see list above.

T-226 SERIES DECLUTCH

ITEM	PART NAME	MODEL	QTY	PART NUMBER	DESCRIPTION
254	Flange/Yoke-front output shaft	156, 160, 161, 169, B67, B74, B76, B77, B80	1	A1-3897-S-331	1550 flange, 4.63" end hub to flange face, 2.0"- 10T spline, 4 holes 0.51" diameter on 4.75" bolt circle diameter, includes item 255 assembled 1.81" from hub end.
		164, 171, B48, B68, B70, B73, B78, E33	1	A1-3897-P-692	16N yoke, 5.63" end hub to center cross assy., 2.0"- 10T spline, includes item 255 tack welded at shoulder.
		L40, L47, L51, L52, R11	1	A-3260-Q-1395	17 series yoke, 5.63" end hub to center cross assy., 2.0"- 10T spline, includes item 255 assembled 1.91" from hub end.
		L45, S1	1	A-3897-S-357	17 series yoke, 5.06" end hub to center cross assy., 2.0"- 10T spline, includes item 255 assembled 1.72" from hub end.
		L46	1	A-3897-P-692	Same as A1-3897-P-692 except item 255 tack welded 1.63" from hub end.
		L48	1	A-3280-P-6490	18N yoke, 5.81" end hub to center cross assy., 2.0"- 10T spline, includes item 255.
		L54	1	A-3260-Z-1456	62N yoke, 4.25" end hub to center cross assy., 2.0"- 10T spline, 4 holes 0.38"- 24 in yoke ears, includes item 255.
		M4	1	3897-F-318	1710 flange, 3.69" end hub to center cross assy., 2.0"- 10T spline, 8 holes 0.38" diameter equal spaced on 7.25" bolt circle diameter.
		R10	1	A-3897-C-705	17N yoke, 5.06" end hub to center cross assy., 2.0"- 10T spline, includes item 255.
		V	1	3260-A-365	72N yoke, 4.25" over hub to center cross assy., 2.0"- 10T spline, 4 ear holes 0.47" diameter.
255	Deflector-front flange	80, 83, 85, 103, 118, 132, 133, 136, 139, 148, 149, 156, 159, 160, 161, 164, 169, 171, 173, 175, 176, 177, B48, B67, B68, B70, B73, B74, B76, B77, B78, B80, D6, E33, G1, HB1, L30, L40, L43, L45, L46, L47, L48, L50, L51, L52, L53, L54, M4, M5, Q1, Q2, R10, R11, S1	1	2837-Z-312	4.81" O.D., 2.95" I.D., 0.81" long, 0.05" thick.
256	Oil Seal-front output shaft	132, 133, 148, 149, 172, 176, E7, E26, E33, E38, E43, E45, E49, E50, E51	1	A-1205-U-1529	4.0" O.D., 2.94" shaft, 0.45" wide, double lip, double case, with spring, replaces A-1805-A-261, (2.75" I.D.).
		V	1	A-1205-V-1894	4.0" O.D., 0.64" thick, 2.94" shaft diameter, 2 lips with springs and dirt lip.
257	Cone-declutch shaft bearing	All**	1	385-A	2.0" I.D.
258	Cup-declutch shaft bearing	All**	1	382-A	3.81" O.D.

**For models see list on page 58.

T-226 SERIES DECLUTCH

ITEM	PART NAME	MODEL	QTY	PART NUMBER	DESCRIPTION
259	Shim-declutch spacer shaft bearing	All**	1	2803-G-1827	2.50" O.D., 2.03" I.D., 0.163" thick, chamfer on I.D. edge.
			1	2803-F-1826	Same as G-1827 except thickness 0.167".
			1	2803-E-1825	Same as G-1827 except thickness 0.171".
			1	2803-D-1824	Same as G-1827 except thickness 0.175".
			1	2803-N-560	Same as G-1827 except thickness 0.179".
			1	2803-M-559	Same as G-1827 except thickness 0.184".
			1	2803-L-558	Same as G-1827 except thickness 0.189".
			1	2803-K-557	Same as G-1827 except thickness 0.194".
			1	2803-P-640	Same as G-1827 except thickness 0.197".
260	Cap-declutch shaft carrier	V	1	A-3266-D-966	3266-G-969 casting, 4.5" O.D., 3.88" I.D., 5 holes 0.41" diameter on 5.5" bolt circle diameter, 2 notches 0.5" diameter on I.D., includes item 258.
		All others**	1	A-3838-Z-78	3838-H-294 casting, 3.88" I.D., 2.38" long, 5 holes 0.41" diameter on 5.5" bolt circle diameter, includes item 258.
261	Nut-declutch carrier cap	L1, L4, X	5	NL-16-1	Locknut, 0.38"- 24, 0.33" high, 0.56" across flats, grade 8.
		All others**	5	N-16-1	0.38"- 24, 0.33" high, 0.56" across flats, grade 8.
262	Lockwasher-declutch carrier cap	All**	5	WA-16	0.67" O.D., 0.32" I.D., 0.09" thick.
263	Gasket-declutch carrier cap	All**	-	2297-A-7021	Silicone gasket, use as required.*
264	Cup-declutch shaft bearing	All**	1	382-A	3.81" O.D.
265	Cone-declutch shaft bearing	All**	1	385-A	2.0" I.D.
266	Shaft-front declutch	All**	1	3880-G-293	10.69" long, 2 splines, 1 spline 2.25"- 10T, 3.19" long, 1 spline 2.0"- 10T, 2.94" long, 1.25"- 18 thread, 1 end with 2 holes 0.16" diameter.
267	Stud-declutch carrier cap	V	5	4X-1756	1.88" long with 0.38"- 16, 0.69" long/ 0.38"- 24, 0.75" long, grade 8.
		All others**	5	4X-320	1.63" long with 0.38"- 16, 0.69" long/ 0.38"- 24, 0.56" long, grade 8.
268	Lever-declutch shift	28, 69, 132, 133, 138, 139, 155, 156, 160, 161, 166, 168, B28, B76, E38, E45, E50, E51, G, G1, H, HB, L, L30, Q, Q1, Q2, V	1	Part not used	
		L35, L37, L49	1	2297-U-2647	Bent lever, 0.25" thick, 1.0" wide with 0.38" hole 1 end, 0.5" hole other end, oval slot close to bend, 4.62" radius between holes.
		All others**	1	2847-G-293	Bent lever, 0.25" thick, 1.0" wide, with 0.39" hole 1 end, 0.5" hole other end, 4.13" radius between holes, oval slot at bend.

* All preformed gaskets are replaced with silicone gasket at time of service.

** For models see list on page 58.

T-226 SERIES DECLUTCH

ITEM	PART NAME	MODEL	QTY	PART NUMBER	DESCRIPTION
269	Screw-declutch shift lever	28, 138, 139, 155, 156, 160, 161, 166, 168, B28, B76, E51, G, G1, H, HB, L, L30, Q, Q1, Q2, V	1	Part not used	
		All others**	1	10X-156	0.44"- 14, 1.3" long, 0.75" across flats, 1 hole 0.13" diameter drilled in head.
270	Lockwire-declutch lever screw	28, 138, 139, 155, 156, 160, 161, 166, 168, B28, B76, E51, G, G1, H, HB, L, L30, Q, Q1, Q2, V	1	Part not used	
		132, 133, 138, 149, 172, 176, E38, E45, E50, X	1	LW-168	16 gage, 8.0" long.
		All others**	1	LW-166	16 gage, 6.0" long.
271	Pin-declutch shift lever	28, 132, 133, 138, 139, 155 156, 160, 161, 166, 168, B28, B76, E38, E45, E50, E51, G, G1, H, HB, L, L30, Q, Q1, Q2, V	1	Part not used	
		All others**	1	1846-F-136	0.89" long, 0.25" diameter, 0.07" hole drilled in body diameter.
272	Cotter-declutch lever pin	28, 132, 133, 138, 139, 155, 156, 160, 161, 166, 168, B28, B76, E38, E45, E50, E51, G, G1, H, HB, L, L30, Q, Q1, Q2, V	1	Part not used	
		All others**	1	K-224	0.06" diameter, 0.5" long.
273	Shaft-declutch shift	28, 138, 139, 155, B28, E51, G, G1, H, HB, L, L30, Q, Q1, Q2	1	2843-C-445	5.88" long, 0.75" diameter, reduced hardness, length on slot end 1.75" long, tang is 58 degrees off vertical with detent position grooves.
		156, 160, 161, 166, 168, B76	1	2244-V-48	Same as F-110 except tang is vertical with detent position grooves.
		All others**	1	2843-F-110	Same as 2843-C-445 except reduced hardness length on slot end 1.63" long, tang is 70 degrees off vertical with detent position grooves.
274	Oil Seal-declutch shift shaft	132, 133, 148, 149, 172, 176, E38, E45, E50	1	A-1205-V-1686	1.13" O.D., 0.26" I.D., 0.75" shaft diameter, single lip with spring and dirt lip.
		All others**	1	A-1805-B-522	1.13" O.D., 0.19" thick, 0.75" shaft diameter, single lip with spring.

** For models see list on page 58.

T-226 SERIES DECLUTCH

ITEM	PART NAME	MODEL	QTY	PART NUMBER	DESCRIPTION
275	Carrier-declutch shaft bearing	28, 138, 139, 155, 156, 160, 161, 166, 168, B28, B76, E51, G, G1, H, HB, L,, L30, Q, Q1, Q2	1	3826-N-274	Same as 3826-K-167 except less 1 hole 0.44"- 14 located 1.25" from center shift rod hole on O.D.
		All others**	1	3826-K-167	3826-P-380 casting, 3.81" I.D., 6.44" long, 1 end has 6 holes 0.47" diameter on 5.5" bolt circle diameter, 1 end has 5 holes 0.38"- 16, 0.88" deep, has 1 hole 0.44"- 14 located 1.25" from center shift rod hole on O.D.
276	Nut-declutch carrier to case	L1, L4, X	6	NL-17-1	Locknut, 0.44"- 20, 0.38" high, 0.68" across flats, grade 8.
		All others**	6	N-17-1	0.44"- 20, 0.42" high, 0.68" across flats.
277	Lockwasher-declutch carrier to case	All**	6	WALM7-2	0.77" O.D., 0.46" I.D., 0.11" thick.
278	Stud-declutch carrier to case	E7, E26, E33, E38, E43, E45, E49, E50, E51	6	4X-1411	3.44" long with 0.44"- 14, 0.69" long/ 0.44"- 20, 1.0" long, grade 8.
		All others**	6	SN-714-1	0.44"- 14/ 0.44"- 20, 1.75" long, grade 8.
279	Ball-declutch shift lock	All**	1	1228-K-37	0.38" diameter.
280	Spring-declutch shift lock	V	1	2258-N-1002	0.36" O.D., 0.22" I.D., 1.88" free length.
		All others**	1	2858-S-45	0.36" O.D., 0.22" I.D., 2.0" free length.
281	Lockwasher-declutch shaft screw	132, 133, E38, E45, E50	1	Part not used	
		All others**	1	1229-F-422	0.78" O.D., 0.04" thick, internal tooth.
282	Screw-declutch shift lock spring	All**	1	S-174-A2	0.5" long, 0.44"- 20, 0.62" across flats, loctite patch on threads, grade 8.
283	Plug-declutch carrier oil filler	28, 138, 139, 155, 156, 160, 161, 166, 168, B28, B76, E51, G, G1, H, HB, Q, Q1, Q2	1	P-112	Male square head, 0.75"- 14 N.P.T.F., 1.08" long, non-magnetic.
		All others**	1	1850-T-150	0.75"- 14 N.P.T.F., non-magnetic male square head, 0.13" drilled hole in head.
284	Fork-declutch shift	All**	1	2849-P-94	3.75" long, 0.75" shaft hole, 0.38"- 24 setscrew hole, 2.94" I.D., between fork tangs.
285	Screw-declutch shift fork	All**	1	26X-52	0.38"- 24, 0.63" long, 0.09" slot in head.
286	Clutch-declutch-sliding	All**	1	2848-V-22	3.5" O.D., 3.0" long, 6 slots equal spaced 2.26"- 10T internal spline has 0.43" wide shift fork groove on O.D.
287	Clutch-declutch driving	All**	1	2848-W-23	3.5" O.D., 2.5" long, 6 slots equal spaced, 2.26"- 10T internal spline, 1 hole 0.38"- 16 tap in line with spline groove.
288	Screw-declutch drive clutch lock	All**	1	S-865	0.38"- 16, 0.63" long, cup point, female hex socket.
289	Gasket-declutch carrier to case	All**	1	2297-A-7021	Silicone gasket, use as required.*

* All preformed gaskets are replaced with silicone gasket at time of service.

** For models see list on page 58.

T-226 SERIES POWER TAKE OFF

T-226 Transfer Case Models with Power Take Off

T-226-103	T-226-CB9
T-226-132	T-226-CB13
T-226-138	T-226-D6
T-226-149	T-226-E45
T-226-161	T-226-L37
T-226-168	T-226-L40
T-226-169	T-226-L52
T-226-171	T-226-N1
T-226-173	T-226-N2
T-226-A22	T-226-Q2
T-226-AB5	

ITEM	PART NAME	MODEL	QTY	PART NUMBER	DESCRIPTION
290	Clutch-P.T.O. driving	All**	1	2848-E-5	3.0" O.D., 1.79" I.D., 1.28" thick, 6 internal spline teeth, 1 hole 0.31"- 18 on O.D., 4 external jaw teeth one end.
291	Screw-drive clutch	All**	1	S-855	0.31"- 18, 0.63" long, cup point, female hex one end.
292	Clutch-P.T.O. sliding	All**	1	2848-D-4	2.92" O.D. over jaw teeth, 1.34" long, 0.44" wide shift fork groove, 1.78"- 6T internal spline, 4 jaw teeth.
293	Gasket-carrier to case	130, 138, 161, 168, 169, 171, 173, A22, AB5, CB9, CB13, L40, L52, N1, N2	-	2297-A-7021	Silicone gasket, use as required.*
294	Carrier-P.T.O.	132, 149, E45, L37, Q2	1	A-3826-P-328	3826-H-60 casting, 6.98" long, 0.13"- 27 N.P.S.F. tapped hole 1.88" from one end, includes items 304 (4X-657), 307 and 312.
		All others**	1	A-3826-P-276	3826-C-393 casting, 6.98" long, has cast boss on one side with 4 holes 0.31"- 18, 1.28" diameter bore and 1 hole 0.19" diameter, includes items 304, (4X-1134-1), 307, and 312.
295	Tag-oil instruction	103, 169, 173, CB9, L40, L52, N1	1	A-1898-C-55	2.38" diameter tag with eyelet, yellow tag with black print.
		All others**	1	1898-C-55	2.38" diameter tag with small hole.
296	Plug-carrier	All**	1	1850-T-150	0.75"- 14 N.P.T.F. thread male square head with 0.13" diameter hole in head, non-magnetic.
297	Ball-shift shaft lock	All**	1	1898-H-34	0.31" diameter.
298	Spring-shift shaft lock	All**	1	2858-T-20	0.31" O.D., 0.53" long, 5.5 coils, 0.05" wire diameter.
299	Washer-declutch shift spring screw	All**	1	1229-E-421	internal tooth type, 0.69" O.D., 0.04" thick.
300	Screw-shift shaft lock spring	All**	1	3X-161	0.38"- 16, 0.44" long, 0.56" across flats.
301	Cotter-shift shaft nut	132, E45	-	Part not used	
		All others**	1	K-236	0.09" diameter, 0.75" long.
302	Nut-shift lever stud	All**	1	NL-28-1	0.5"- 20, 0.44" high, 6 slots, 0.75" across flats, grade 8.
303	Washer-shift lever stud	132, E45	-	Part not used	
		All others**	1	WA-38	1.06" O.D., 0.53" I.D., 0.09" thick.
304	Stud-shift lever	149, D6, L37 Q2	1	4X-657	0.5"- 13/ 0.5"- 20 threads, 1.63" long, 0.13" drilled hole in 0.5"- 20 thread.
		All others**	1	4X-1134-1	0.5"- 13/ 0.5"- 20 threads, 1.56" long, grade 8.

* All preformed gaskets are replaced with silicone gasket at time of service.

** For models see list above.

T-226 SERIES POWER TAKE OFF

ITEM	PART NAME	MODEL	QTY	PART NUMBER	DESCRIPTION
305	Fork-P.T.O. shift	All**	1	2849-N-92	2.06" center shift shaft hole to end fork tangs, 0.5" diameter shift shaft hole, 0.31"- 24 setscrew hole.
306	Screw-shift fork lock	All**	1	26X-56	0.53" long, 0.31"- 24 with 1 slot head 0.09" wide.
307	Oil Seal-shift fork	All**	1	A-1805-Y-415	0.88" O.D. 0.22" wide, 0.5" shaft I.D., single case, single lip with spring, free lip I.D., 0.44", included in item 294.
308	Shaft-P.T.O. shift	All**	1	2843-K-427	3.81" long, 0.5" diameter with 1.5" long bent leg, 1 hole 0.13" diameter drilled 0.13" from end of bent leg.
309	Lever-P.T.O. shift	132, E45	-	Part not used	
		All others**	1	2847-A-287	6.54" long, 0.88" wide, 0.25" thick, 1 hole each end 0.49" diameter 5.5" apart, 1 oval hole.
310	Washer-shift lever	132, E45	-	Part not used	
		All others**	1	1829-V-386	0.88" O.D., 0.5" I.D., 0.03" thick.
311	Cotter-lever stud nut	132, E45	-	Part not used	
		All others**	1	K-236	0.09" diameter, 0.75" long.
312	Cup-P.T.O. bearing	All**	1	332	3.15" O.D., included in item 294.
313	Cone-P.T.O. bearing	All**	1	342-S	1.69" bore.
314	Shaft-P.T.O.	132, 149, E45	1	3880-A-1119	9.63" long, 2 splines, 1 spline 1.68"- 6T, 2.13" long, 1 straight spline 1.5"- 10T spline, 2.0" long, 1 end has 1.0"- 20 thread with 0.16" diameter hole in thread, 2.03" O.D. journal, no eccentric.
		D6, L37, Q2	1	3880-C-107	9.63" long, 2 splines, 1 spline 1.68"- 6T, 2.13" long, 1 tapered spline 10T, 1.88" long, 1.0"- 20 thread with 0.16" diameter hole in thread, 2.0" O.D. journal had keyway in taper spline shaft end.
315	Shaft-P.T.O.	103, 169, 173, CB9, D6, L37, L40, L52, N1	1	3880-W-569	Same as item 314 (C-107) except has 1.69" diameter eccentric 0.97" wide and 0.94" diameter bore 0.47" deep at 1.68"- 6 spline end.
		138, 161, 168, 171, A22, AB5, CB13, N2	1	3880-U-905	Same as item 314 (A-1119) except shaft had 1.69" diameter eccentric 0.97" wide.
316	Key-P.T.O. shaft	103, 169, 173, CB9, D6, L37, L40, L52, N1, Q2	1	16X-28	0.38" x 0.38" x 1.88" worm shaft key.
317	Cone-P.T.O. bearing	All**	1	342-S	1.69" bore.
318	Cup-P.T.O. bearing	All**	1	332	3.15" O.D.
319	Shim-P.T.O. bearing cap	All**	3	2803-L-220	0.003", use as required, 3.88" O.D., 3.16" I.D., 4 equal spaced slots on I.D., 4 equal spaced holes 0.41" diameter on 3.75" bolt circle.
			2	2803-M-221	Same as L-220 except thickness 0.005", use as required.
			2	2803-N-222	Same as L-220 except thickness 0.10". use as required.
			3	2803-R-564	0.010" use as required, 5.12" O.D., 3.91" I.D., 6 holes 0.47" diameter on 4.88" bolt circle diameter, 3 notches on I.D.
		132, 149, D6, E45, L37, Q2	1	2803-U-723	Same as L-220 except thickness 0.020", use as required.
320	Cap-P.T.O. shaft bearing	D6, L37, Q2	1	3866-L-350	3866-N-1444 casting, 3.75" O.D., 2.5" I.D., 0.91" thick with 4 equal spaced holes 0.33" diameter on 3.75" bolt circle diameter, 1 notch on I.D. 0.63" wide.

(Continued)

** For models see list on page 63.

T-226 SERIES POWER TAKE OFF

ITEM	PART NAME	MODEL	QTY	PART NUMBER	DESCRIPTION
320	Cap-P.T.O. shaft bearing	103, 169, 173, CB9, L40, L52, N1	1	A-3866-L-350	Same as 3866-L-350 except includes item 35 (A-157).
		All others**	1	A1-3866-L-350	Same as 3866-L-350 except includes item 325 (C-159).
321	Lockwasher-carrier cap	All**	4	WA-15Z	0.58" O.D., 0.33" I.D., 0.08" thick.
322	Capscrew-carrier cap	All**	4	S-256-2	0.31"- 18, 0.75" long, 0.49" across flats, grade 8.
323	Washer-P.T.O. shaft outer bearing	138, 161, 168, 171, A22, AB5, CB13, N2	1	1829-T-722	1.97" O.D., 1.56" I.D., 0.06" thick.
324	Sleeve-P.T.O. shaft oil seal	132, 138, 149, 161, 168, 171, A22, AB5, CB13, E45, N2	1	1844-J-634	1.75" O.D., 1.52" I.D., 1.09" long.
325	Oil Seal-P.T.O. shaft	103, 169, 173, CB9, D6, L37, L40, L52, N1, Q2	1	A-1805-A-157	2.51" O.D., 1.51" I.D., double case, optional lip construction, with spring.
		All others**	1	A-1805-C-159	2.5" O.D., 1.69" free lip I.D., 0.41" wide, double case, single lip with spring.
326	Oil Dam-P.T.O. carrier	All**	1	1829-T-384	3.81" O.D., 2.31" I.D., 0.03" thick.
327	Flange-companion	132, 149, AB5, CB13, E45	1	3897-A-365	1500 flange, 2.63" end hub to flange mounting face, 1.5"- 10T straight spline, 4 holes 0.51" diameter on 4.75" bolt circle diameter.
		L40	1	3897-W-1531	1500 flange, 2.13" end hub to flange mounting face, 4 holes 0.51" diameter on 4.75" bolt circle diameter for tapered spline with keyway.
328	Cotter-P.T.O. shaft nut	132, E45	-	Part not used	
		All others**	1	K-2412	0.13" diameter, 1.5" long.
329	Nut-P.T.O. shaft	132, E45	1	1227-C-939	1.0"- 20, 0.57" thick, 1.29" across flats, grade 8.
		All others**	1	1227-L-714	1.0"- 20, 0.5" high, 6 slots, 1.5" across flats, grade 8.
330	Capscrew-oil pump to carrier	132, 149, D6, E45, L37, Q2	-	Part not used	
		All others**	4	S-2511-1	0.31"- 18, 1.38" long, 0.5" across flats, grade 8.
331	Lockwasher-oil pump	132, 149, D6, E45, L37, Q2	-	Part not used	
		All others**	4	WA-15	0.58" O.D., 0.33" I.D., 0.08" thick.
332	Oil Pump body	132, 149, D6, E45, L37, Q2	-	Part not used	
		All others**	1	A1-2847-Q-615	2.25" x 2.25" with 4 holes 0.33" diameter, includes items 332, 343 344, 345, and 349.
333	Ball-oil pump check valve	132, 149, D6, E45, L37, Q2	-	Part not used	
		All others**	1	1228-K-37	0.37" diameter.
334	Spring-outlet release ball	132, 149, D6, E45, L37, Q2	-	Part not used	
		All others**	1	2858-X-102	3 coils 0.48" long, 0.41" O.D., 0.27" I.D.
335	Fitting-oil pump outlet	132, 149, D6, E45, L37, Q2	-	Part not used	
		All others**	1	1898-K-531	1.0" long, 0.5"- 20 male thread, 0.44"- 24 female, 0.19" hole included in item 332.
336	Adapter-oil pump	132, 149, D6, E45, L37, Q2	-	Part not used	
		All others**	1	1898-W-803	1898-G-1255 casting, 2.25" x 2.25" x 0.88" high, 1.09" bore diameter, 4 holes 0.33" diameter, 1 hole 0.19" diameter.

** For models see list on page 63.

T-226 SERIES POWER TAKE OFF

ITEM	PART NAME	MODEL	QTY	PART NUMBER	DESCRIPTION
337	Fitting-oil pump outlet tube	132, 149, D6, E45, L37, Q2	-	Part not used	
		All others**	1	1898-J-504	0.59" long, 0.44"- 24 male thread, 0.25" hole, 0.44" across flats, included in item 340.
338	Grommet-outlet oil tube	132, 149, D6, E45, L37, Q2	-	Part not used	
		All others**	1	1898-M-247	0.86" diameter with 0.38" diameter hole, 0.31" thick, included in item 340.
339	Clip-oil tube	132, 149, D6, E45, L37, Q2	-	Part not used	
		All others**	1	A1-1898-K-245	1.75" long, 1 hole 0.62" diameter, 1 hole 0.41" diameter, includes item 338.
340	Tube-oil pump outlet	132, 149, D6, E45, L37, Q2	-	Part not used	
		All others**	1	A-2847-H-632	developed length 23.75", includes items 337, 338, and 339.
341	Plunger-oil pump	132, 149, D6, E45, L37, Q2	-	Part not used	
		All others**	1	2847-R-616	2847-Y-909 forging, 4.88" long, 0.75" body diameter, 1.69" diameter across jaws.
342	Fitting-oil pump outlet elbow	132, 149, D6, E45, L37, Q2	-	Part not used	
		All others**	1	1898-L-532	0.13" male pipe thread, 0.91" long, 0.53" with 0.44"- 24 female thread for 0.25" diameter tube, female thread end is 0.53" square.
343	Inlet Connection-oil pump	132, 149, D6, E45, L37, Q2	-	Part not used	
		All others**	1	A-1898-F-240	0.5"- 20 thread male end 0.88" long, female end with fitting for 0.38" diameter copper tube 1.28" long, included in item 332.
344	Ball-oil pump check valve	132, 149, D6, E45, L37, Q2	-	Part not used	
		All others**	1	1228-K-37	0.37" diameter, included in item 332.
345	Spring-outlet release ball	132, 149, D6, E45, L37, Q2	-	Part not used	
		All others**	1	2858-X-102	3 coils 0.48" long, 0.41" O.D., 0.27" I.D., included in item 332.
346	Clip-oil tube	132, 149, D6, E45, L37, Q2	-	Part not used	
		All others**	1	A1-1898-K-245	1.75" long, 1 hole 0.62" diameter, 1 hole 0.41" diameter, includes item 347.
347	Grommet-inlet oil tube	132, 149, D6, E45, L37, Q2	-	Part not used	
		All others**	1	1898-N-534	1.0" O.D., 0.25" wide, 0.25" diameter hole I.D. with 0.75" diameter center groove on O.D., included in item 348.
348	Tube-oil pump inlet	132, 149, D6, E45, L37, Q2	-	Part not used	
		All others**	1	2847-G-631	0.38" diameter copper tubing, developed length 26.0".
349	Fitting-oil pump outlet tube	132, 149, D6, E45, L37, Q2	-	Part not used	
		All others**	1	1898-J-504	0.59" long, 0.44"- 24 male thread, 0.25" hole, 0.44" across flats, included in item 332 and 348.
350	Fitting-oil pump inlet elbow	132, 149, D6, E45, L37, Q2	-	Part not used	
		All others**	1	A-1898-U-645	1.06" long male end with 0.25" N.P.T.F., female end 1.14" long with coupling for 0.38" diameter copper tube.

** For models see list on page 63.

T-226 SERIES PISTON LUBRICATION PUMP - CASE

T-226 Transfer Case Models with Piston Lubrication Pump - Case

T-226-132	T-226-E43
T-226-133	T-226-E45
T-226-148	T-226-E50
T-226-149	T-226-L37
T-226-172	T-226-P7
T-226-176	T-226-Q1
T-226-B74	T-226-Q2
T-226-E38	

ITEM	PART NAME	MODEL	QTY	PART NUMBER	DESCRIPTION
351	Cap-main drive shaft front bearing	All**	1	A1-3838-M-221	3838-D-316 casting, 6.13" O.D., 3.5" I.D., 3.56" long, 5 holes 0.47" diameter on 5.5" bolt circle diameter, 2 holes 0.38"- 16 on 5.88" bolt circle diameter, includes 2 pins (1898-X-128) welded in place and item 11.
352	Tube-oil pump intake	P7	-	Part not used	
		B74, E43, L37, Q1, Q2	1	A-3897-S-1839	0.38" diameter copper tube, developed length 26.7", includes item 365 and 366 (A-885).
		All others**	1	A-3196-X-24	0.38" diameter copper tube, developed length 27.3", includes item 365.
353	Nut-intake tube to pump fitting	P7	-	Part not used	
		All others**	1	1898-G-241	0.66" long, 0.63"- 18 male thread, 0.63" across flats.
354	Fitting-output tube to pump	B74, E43, L37, P7, Q1, Q2	1	1898-K-531	1.0" long, 0.5"- 20 male thread, 0.44"- 24 female, 0.19" hole, included in item 351.
		All others**	1	2206-T-72	1.14" long, 0.5"- 20 male thread, 0.44"- 24 female end.
355	Spring-oil pump check valve ball	All**	1	2858-X-102	3 coils 0.48" long, 0.41" O.D., 0.27" I.D., included in item 351.
356	Ball-oil pump check valve	All**	1	1228-K-37	0.37" diameter, included in item 351.
357	Piston-oil pump	All**	1	2847-C-653	3847-Y-831 forging, 5.84" long, 0.75" diameter body, 3.0" diameter between jaws.
358	Adapter-oil pump body to case	All**	1	1898-W-803	1898-G-1255 casting, 2.25" x2.25" x 0.88" high, 1.09" bore diameter, 4 holes 0.33" diameter, 1 hole 0.19" diameter.
359	Body-oil pump	B74, E43, L37, P7, Q1, Q2	1	A-2847-D-654	includes item 354 (1898-K-531) on outlet and item 362 (E-239) on inlet.
		All others**	1	A2-2847-D-654	includes item 354 (2206-T-72) on outlet and item 362 (E-239) on inlet.
360	Spring-oil pump check valve ball	All**	1	2858-X-102	3 coils 0.48" long, 0.41" O.D., 0.27" I.D., included in item 351.
361	Ball-oil pump check valve	All**	1	1228-K-37	0.37" diameter, included in item 351.
362	Fitting-intake tube to pump	All**	1	1898-E-239	1.0" long, 0.5"- 20 male thread, 0.42" I.D., 0.75" across flats.
363	Nut-oil pump output tube fitting	P7	-	Part not used	
		All others**	1	1898-J-504	0.59" long, 0.44"- 24 male thread, 0.25" hole, 0.44" across flats, included in item 364.

** For models see list above.

T-226 SERIES PISTON LUBRICATION PUMP - CASE

ITEM	PART NAME	MODEL	QTY	PART NUMBER	DESCRIPTION
364	Tube-oil pump output	B74, E43, Q1	1	A-3897-T-1840	0.25" copper tube, developed length 24.63", includes item 363.
		132, 149, E45	1	A-3196-Z-26	0.25" copper tube, developed length 25.6", includes item 363.
		133, 148, 172, 176, E38, E50	1	A-3196-Y-25	0.25" copper tube, developed length 22.8", includes item 363.
		L37, Q2	1	A-3897-U-2413	0.25" copper tube, developed length 26.5", includes item 363.
365	Nut-intake tube to pump fitting	P7	-	Part not used	
		B74, E43, L37, Q1, Q2	1	1898-G-241	0.66" long, 0.63"- 18 male end, 0.63" across flats.
366	Elbow & Fitting Assy.-pump intake tube to gear case oil filler	P7	-	Part not used	
		B74, E43, L37, Q1, Q2	1	1898-A-885	Male end 0.5"- 14, 1.25" long pipe thread, female end , 1.44" long 0.75" hex.
		All others**	1	1898-H-242	Male end 1.25" long, 0.25" N.P.T.F., female end 0.63"- 18, 0.73" long.
367	Lockwasher-oil pump to case capscrew	All**	4	WA-15Z	0.58" O.D., 0.33" I.D., 0.08" thick.
368	Capscrew-oil pump to case	All**	4	S-2512-2	0.31"- 18, 1.5" long, 0.5" across flats, grade 8.
369	Fitting-transfer case rear cap tube	L37, Q2	1	1898-S-107	0.73" long, 0.19" I.D., male end, 0.13"- 27 N.P.T.F., female end 0.44"- 24.
		P7	-	Part not used	
		132, 149, B74, E43, E45, Q1	1	1898-L-532	0.13" male pipe thread, 0.91" long, 0.53" with 0.44"- 24 female thread for 0.25" diameter tube, female thread end is 0.53" square.
370	Nut-oil pump output tube fitting	P7	-	Part not used	
		All others**	1	1898-J-504	0.59" long, 0.44"- 24 male thread, 0.25" hole 0.44" across flats, included in item 364.
-	Gasket-oil pump & adapter to case	All**	-	1199-Q-3842	Silicone gasket, use as required.*

* All preformed gaskets are replaced with silicone gasket at time of service.

** For models see list on page 67.

ARVINMERITOR AFTERMARKET PARTS WARRANTY

We warrant all new parts for one year from date of shipment to the buyer against defective material or workmanship (but not against damage caused by accident, abuse or improper installation, maintenance or repair) when such parts are used on vehicles the specifications of which have been approved by our Engineering Department.

As the exclusive remedy under this warranty, we will, at our option, repair or replace such parts free of charge, or take back the nonconforming parts and refund the monies paid by buyer for such parts, if found on examination by us to be nonconforming and if any necessary return charges are prepaid.

If it is necessary to return any parts under this warranty, buyer agrees not to make any deduction on account thereof from remittances on current accounts while claims are in the process of disposition. Any expense incurred without our consent for repairs or replacement will not be allowed.

THIS WARRANTY IS EXPRESSLY IN LIEU OF ALL OTHER WARRANTIES OR CONDITIONS, EXPRESS, IMPLIED OR STATUTORY, INCLUDING ANY IMPLIED WARRANTY OF MERCHANTABILITY OR FITNESS FOR PARTICULAR PURPOSE. IN NO EVENT SHALL SELLER BE LIABLE FOR INCIDENTAL OR CONSEQUENTIAL DAMAGES OF ANY NATURE.

Only genuine ArvinMeritor replacement parts are covered by this aftermarket parts warranty.

Information contained in this publication was in effect at the time the publication was approved for printing and is subject to change without notice or liability. ArvinMeritor reserves the right to revise the information presented or discontinue the production of parts at any time.

ArvinMeritor™

Commercial Vehicle Aftermarket

Meritor Heavy Vehicle Systems, LLC

7975 Dixie Highway
Florence, KY 41042 USA
888-725-9355
www.arvinmeritor.com

© Copyright 2004
ArvinMeritor, Inc.

Printed in U.S.A.

Revised 10/2004
PB-90200