

Transmission
Parts List T210-61

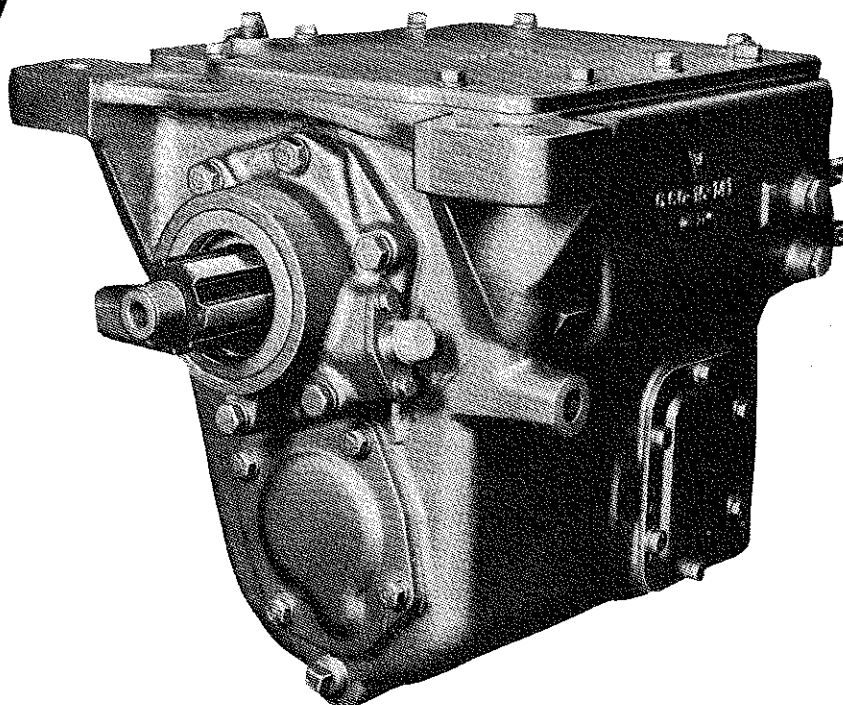
January, 1978

7041

AUXILIARY TRANSMISSION

Supersedes Parts Lists T210-16 Dated September, 1973
and T-210-61 Dated February, 1975

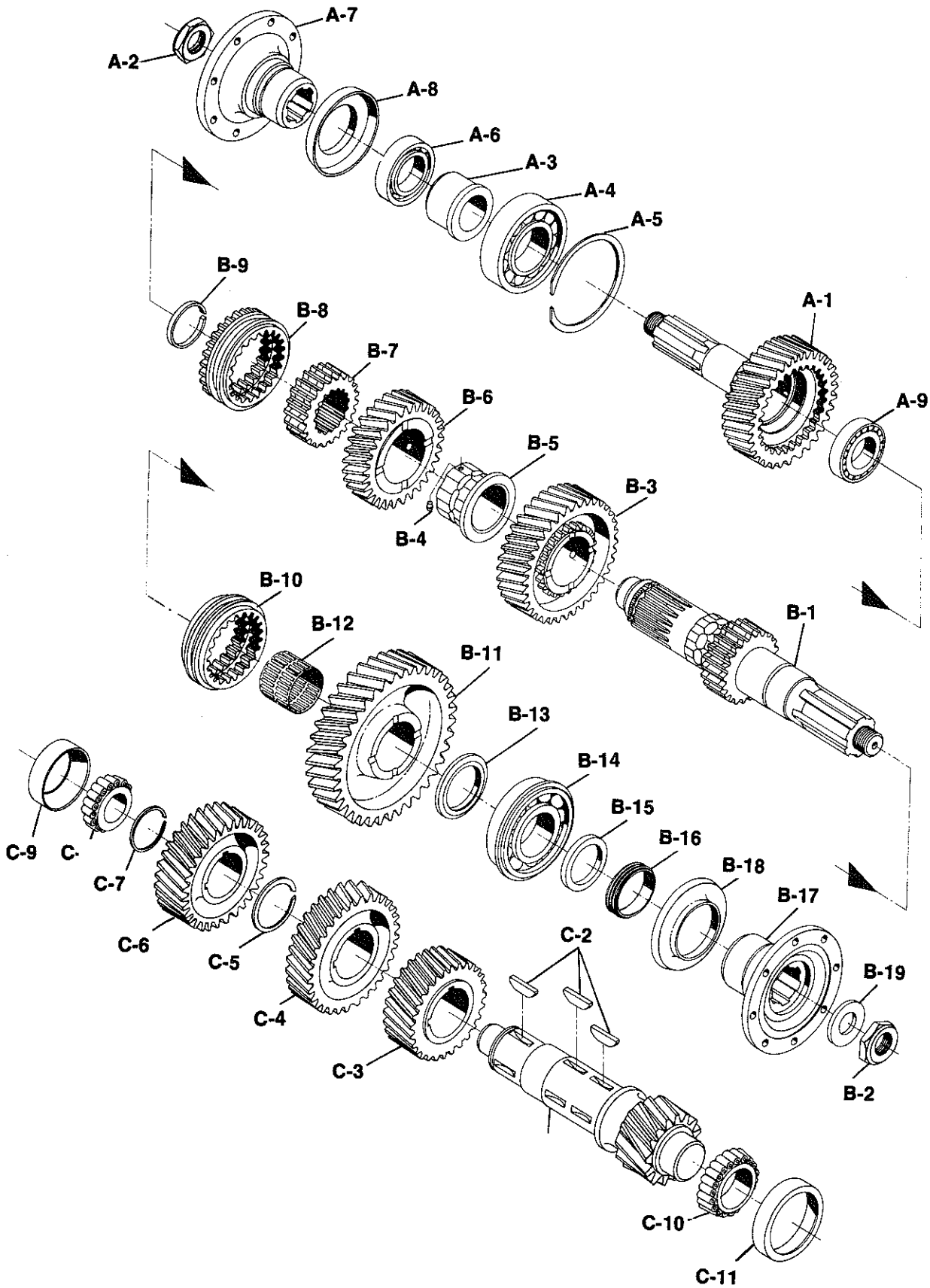
4 SPEED AUXILIARY TRANSMISSIONS



Spicer®

CONTENTS

	PAGE
GEARS and RELATED PARTS	2 & 3
BEARING CAPS and RELATED PARTS	4 & 5
CASE and SHIFTER PARTS	6 & 7
CASE CHART	7
REPAIR and OVERHAUL KITS	8 & 9
COMPANION FLANGES, FLANGE YOKES and END YOKES	10
TOP MOUNTED P.T.O. CASE, GEARS and RELATED PARTS	
Internal Lube	See Catalog T210-59
Forced Lube and Non-Forced Lube	See Catalog T210-60
TABULATED BILLS OF MATERIAL	11 & 12

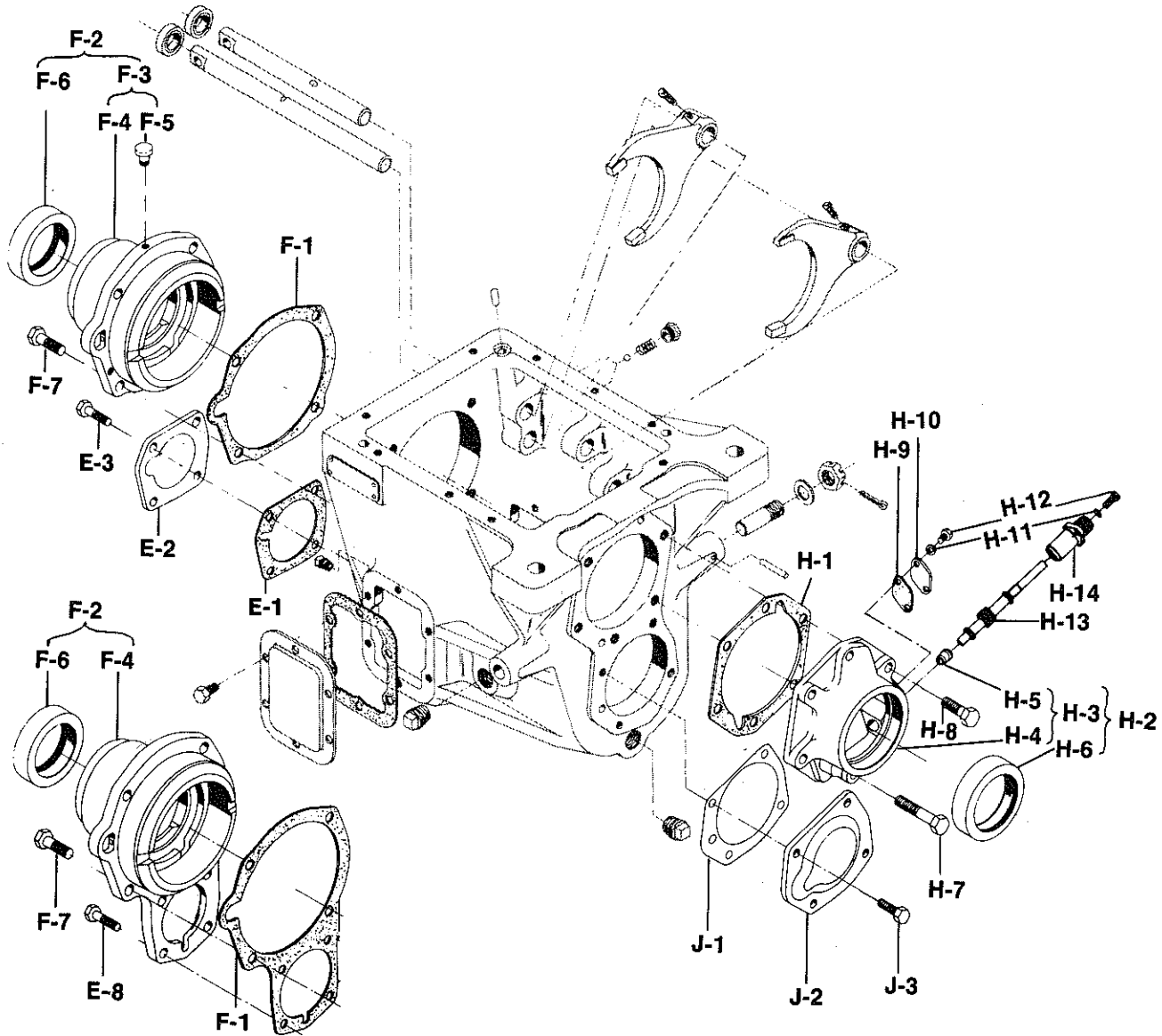


Ref. No.	Part No.	Part Description	Qty. Reqd.
DRIVE GEAR GROUP—INPUT			
	311612X	KIT - drive gear & nut	1
A-1	N.S.S.	Drive Gear—(33T—6 spline)	1
A-2	500898	Nut—1¼"–18 hex (2⅞" across flats)	1
A-1	60-35-70	Drive Gear—(33T—10 spline) (Ford only)	1
A-2	500713	Nut—1¼"–18 hex (2¼" across flats) (Ford only)	1
A-3	60-37-30	Spacer—drive gear bearing	1
A-4	550911	Bearing—drive gear rear	1
A-5	60-381-9	Snap Ring—drive gear bearing	1
A-6	550039	Bearing—drive gear front	1
A-7	See Tab Bills	Companion Flange, Flange Yoke, or End Yoke—front	1
A-8	330287	Flinger—drive gear front	1
A-9	550090	Bearing—drive gear pocket	1
MAINSHAFT GROUP—OUTPUT			
	311611X	KIT—mainshaft & nut	1
B-1	N.S.S.	Mainshaft (All)	1
B-2	500898	Nut—1¼"–18 hex (2⅞" across flats)	1
"	500713	Nut—1¼"–18 hex (2¼" across flats) (Ford only)	1
B-3	60-8-64	Gear—m/s 2nd speed (36T)	1
B-4	325-SP	Pin—m/s 3rd speed gear sleeve	1
B-5	60-37-29	Sleeve—m/s 3rd speed gear	1
B-6	60-8-65	Gear—m/s 3rd speed (30T)	1
B-7	60-466-13	Gear—m/s clutch overdrive	1
B-8	60-465-14	Clutch Collar—direct & overdrive	1
B-9	60-381-7	Snap Ring—m/s clutch gear	1
B-10	60-465-12	Clutch Collar—m/s underdrive	1
B-11	60-8-63	Gear—m/s 1st speed (37T)	1
B-12	550901	Needle Bearing—m/s 1st gear	1
B-13	330522	Thrust Washer—m/s 1st speed gear	1
B-14	550064	Bearing—m/s rear	1
B-15	637-W	Washer—speedometer drive gear	1
B-16	See Tab Bills	Gear—speedometer drive	} 1
"	70-37-7	Spacer—(Used in place of speedometer drive gear)	
B-17	See Tab Bills	Companion Flange, Flange Yoke, or End Yoke—rear	1
B-18	330499	Flinger—m/s rear	1
B-19	184-W	Washer—m/s nut	1
COUNTERSHAFT GROUP			
C-1	60-30-58	Countershaft	1
C-2	500010-8	Woodruff Key #29	6
C-3	60-196-25	Gear—c/s 2nd speed (28T)	1
C-4	60-196-26	Gear—c/s 3rd speed (34T)	1
C-5	60-381-8	Snap Ring—c/s 3rd speed gear	1
C-6	60-1-24	Gear—c/s drive (31T)	1
C-7	82-381-1	Snap Ring—c/s drive gear	1
C-8	550167	Cone—c/s front bearing	1
C-9	550216	Cup—c/s front bearing	1
C-10	550154	Cone—c/s rear bearing	1
C-11	550205	Cup—c/s rear bearing	1

N.S.S.—Not Sold Separately

This illustrated Parts List includes all serviceable Assemblies, Sub-Assemblies, Kits and Parts used in this series of transmissions. Order by Part Number in Part Number Column.

TWO-PIECE BEARING CAPS



SINGLE-PIECE BEARING CAP

IMPORTANT

On an old case, the old single-piece bearing cap must be used for proper lubrication of the countershaft bearing. On a new case, either the old bearing cap or the new two-piece bearing cap may be used because oil passage is provided through the case.

Ref. No.	Part No.	Part Description	Qty. Reqd.
SINGLE-PIECE BEARING CAP GROUP			
F-1	60-223-25	Gasket	1
F-2	311415X	Cap & Oil Seal Assembly—c/s & drive gear bearing	1
F-4	60-19-80	Cap—drive gear bearing	1
F-6	60-463-8	Oil Seal	1
F-7	545001-4	Screw— $\frac{1}{2}$ "—13 x $1\frac{1}{2}$ " hex head nylon patch self locking	4
F-8	545028-2	Screw— $\frac{7}{16}$ "—14 x $1\frac{1}{2}$ " hex head nylon patch self locking	4

MODEL 7041

Bearing Caps and Related Parts

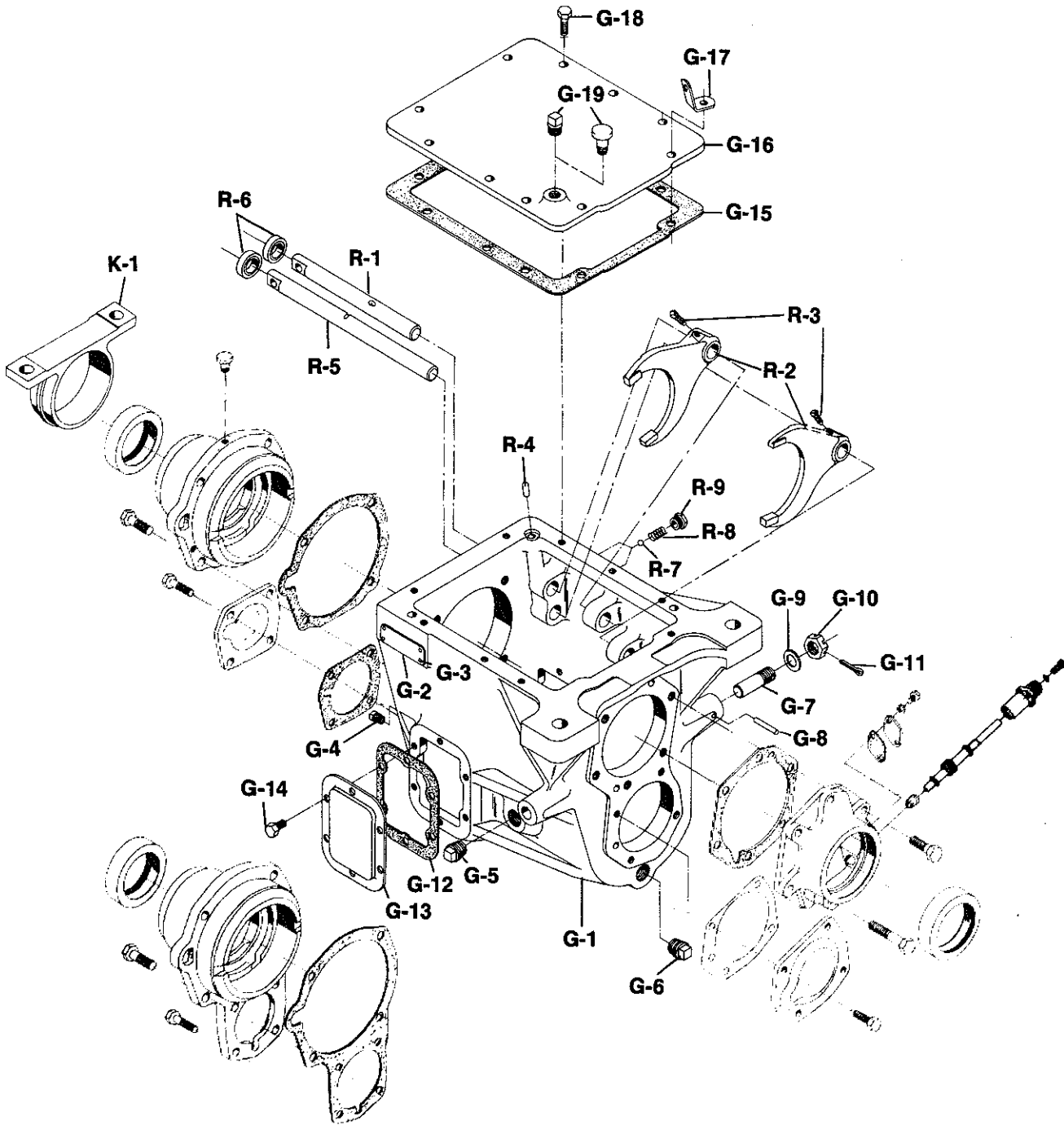
Spicer®

4 SPEED AUXILIARY

T210-61

Ref. No.	Part No.	Part Description	Qty. Reqd.
TWO-PIECE BEARING CAP GROUP			
COUNTERSHAFT FRONT BEARING CAP			
E-1	60-223-30	Gasket	1
E-2	60-22-31	Cap	1
E-3	545028	Screw— $7/16"$ -14 x $1\frac{1}{4}"$ hex head nylon patch self locking	4
DRIVE GEAR BEARING CAP			
<i>With Breather</i>			
F-1	60-223-29	Gasket—front bearing cap	1
F-2	60-19-93-2X	Cap, Breather & Oil Seal Assembly—includes F-3 thru F-6	1
F-3	60-19-93-1X	Cap & Breather Assembly	1
F-4	N.S.S.	Cap	1
F-5	312268	Breather	1
F-6	60-463-8	Oil Seal	1
<i>Without Breather</i>			
F-2	60-19-91-1X	Cap & Seal Assembly	1
F-4	N.S.S.	Cap	1
F-6	60-463-8	Oil Seal	1
F-7	545001-4	Screw— $1/2"$ -13x $1\frac{1}{2}"$ hex head nylon patch self locking	4
MAINSHAFT REAR BEARING CAP GROUP			
H-1	60-223-26	Gasket	1
H-2	See Tab Bills	Cap, Seal & Bushing Assembly—includes H-3 thru H-6	1
H-3	311190X	Cap & Bushing Assembly (part of 311414X)	} 1
"	311296X	Cap & Bushing Assembly (part of 311891X) (w/brake)	
"	313013X	Cap & Bushing Assembly (part of 311878X) (w/brake)	
H-4	N.S.S.	Cap	1
H-5	81-475-1	Bushing—speedometer	1
H-6	60-463-5	Oil Seal—m/s rear, use with 311190X	} 1
"	60-463-6	Oil Seal—m/s rear, use with 311296X or 313013X (w/brake) .	
H-7	545001-10	Screw— $1/2"$ -13 x $2\frac{3}{4}"$ hex head nylon patch self locking	2
H-8	545001-3	Screw— $1/2"$ -13 x $1\frac{3}{4}"$ hex head nylon patch self locking	4
H-9	481-1	Gasket—speedometer cover	1
H-10	480-1	Cover—speedometer	1
H-11	500357-10	Washer— $5/16"$ lock	2
H-12	500397-6	Screw— $5/16"$ -18 x $5/8"$ hex head	2
H-13	See Tab Bills	Gear—speedometer driven	1
H-14	70-454-1	Sleeve—speedometer driven gear	1
<i>With Bendix Brake</i>			
N.S.	918-420-1	Tube—oil drain	1
N.S.	227-V	Stud— $1/2"$ -13"— $1/2"$ -20 x $3\frac{9}{16}"$	1
N.S.	500357-13	Lock Washer— $1/2"$	1
N.S.	500371-5	Nut— $1/2"$ -20 hex	1
COUNTERSHAFT REAR BEARING CAP GROUP			
<i>Shim Kit (after serial No. 682881)</i>			
J-1	312998X	Shim Kit (after serial No. 682881)	1
"	73-228-1-1	Shim—c/s rear bearing cap (.003")	7
"	73-228-1-2	Shim—c/s rear bearing cap (.005")	2
"	73-228-1-3	Shim—c/s rear bearing cap (.010")	1
"	73-228-1-4	Shim—c/s rear bearing cap (.030")	1
<i>Shim Kit (used prior to serial No. 682881)</i>			
J-1	312999X	Shim Kit (used prior to serial No. 682881)	1
"	60-228-13-1	Shim—c/s rear bearing cap (.003")	7
"	60-228-13-2	Shim—c/s rear bearing cap (.005")	2
"	60-228-13-3	Shim—c/s rear bearing cap (.010")	1
"	60-228-13-4	Shim—c/s rear bearing cap (.030")	1
J-2	73-22-3	Cap	1
J-3	545028	Screw— $7/16"$ -14 x $1\frac{1}{4}"$ hex head nylon patch self locking	4

N.S.—Not Shown N.S.S.—Not Sold Separately



MODEL 7041

Case and Shifter Parts

Spicer®

4 SPEED AUXILIARY

T210-61

Ref. No.	Part No.	Part Description	Qty. Reqd.
CASE GROUP			
	See Tab Bills	Case Assembly—includes G-1 thru G-8	1
G-1	N.S.S.	Case—transmission	1
G-2	See Case Chart	Nameplate	1
G-3	252-SP	Pin—name plate	4
G-4	500112	Plug— $\frac{1}{4}$ "—18 sq. head	1
G-5	500091	Plug— $\frac{3}{4}$ "—14 sq. head	1
G-6	62-39-3 (or)	Plug—magnetic drain	1
"	62-39-4	Plug—magnetic drain (recessed head)	1
G-7	144Q-65 (or)	Stud—bell crank pivot $2\frac{5}{8}$ " length	1
"	144Q-84	Stud—bell crank pivot 3" length	1
G-8	330216-3	Pin—bell crank pivot stud	1
G-9	25-W	Washer— $\frac{3}{4}$ " flat	1
G-10	85-J	Nut— $\frac{3}{4}$ "—20 (1" across flats)	1
G-11	500024-7	Cotter Pin— $\frac{1}{8}$ " x $1\frac{1}{4}$ "	1
G-12	46-324-1	Gasket—p.t.o. aperture cover	2
G-13	50-267-2	Cover—p.t.o. aperture	2
G-14	330800	Screw— $\frac{3}{8}$ "—16 x $\frac{3}{4}$ " hex head nylon patch self locking	12
G-15	70-155-4	Gasket—case cover	1
G-16	60-16-63	Cover—case	1
G-17	330564-2	Lift Hook	2
G-18	330801-1	Screw— $\frac{7}{16}$ "—14 x $\frac{7}{8}$ " hex head nylon patch self locking	10
G-19	500113	Plug—case cover (use when breather is in bearing cap)	1
"	5951X	Breather (use when breather is not in bearing cap)	1
K-1	60-410-4	Trunnion	1
N.S.	500170-4	Fitting—trunnion lubrication	1
N.S.	500647-1	Nut— $\frac{5}{8}$ "—18 hex (brake mounting)	4
N.S.	500414-9	Screw— $\frac{5}{8}$ "—18 x $1\frac{1}{2}$ " hex head (brake mounting)	4
SHIFTER PARTS			
R-1	60-67-29	Shift Rod—overdrive	1
R-2	60-66-28	Shift Fork	2
R-3	545004	Screw— $\frac{7}{16}$ "—20 x $\frac{13}{16}$ " sq. hd nylon patch self locking	2
R-4	18-12-1	Interlock	1
R-5	60-67-30	Shift Rod—underdrive	1
R-6	61-463-4	Oil Seal—shift rod	2
R-7	50-80-5	Ball—shift rod poppet	2
R-8	52-72-1	Spring—shift rod poppet (58 lbs.)	2
"	918-72-11	Spring—shift rod poppet (25 lbs. for B/M 300528-37, -38 & -42 only)	2
R-9	60-59-6	Retainer—shift rod poppet spring	2

Case Chart

Case Assembly	Case Casting Number	Oil Drain Plug	Brake Lever Stud	Brake Lever Stud Pin	Name Plate
60-15-155-1X	C60-15-141-3	62-39-3	—	—	NP-96
60-15-155-2X	C60-15-141-3	62-39-3	—	—	NP- 2
60-15-155-4X	C60-15-141-3	62-39-3	144Q-65	330216-3	NP-96
60-15-155-6X	C60-15-141-3	62-39-3	144Q-84	330216-3	NP-96
60-15-156-2X	C60-15-141-3	62-39-3	144Q-65	330216-3	NP-96
60-15-157-1X	C60-15-141-3	62-39-4	—	—	NP-96

N.S.—Not Shown N.S.S.—Not Sold Separately

Part No.	Part Description	Qty. Reqd.
313400-2X	BASIC OVERHAUL KIT	
311192X	Gasket Kit	1
46-324-1	Gasket—p.t.o. aperture cover	2
60-223-29	Gasket—m/s front bearing cap	1
60-223-30	Gasket—c/s front bearing cap	1
60-223-26	Gasket—m/s rear bearing cap	1
70-155-4	Gasket—shifter housing cover	1
60-223-25	Gasket—m/s and c/s front bearing cap (single piece)	1
311357X	Bearing Kit	1
550039	Bearing—drive gear front	1
550911	Bearing—drive gear rear	1
550090	Bearing—drive gear pocket	1
550901	Bearing—m/s 1st gear (needle)	1
550064	Bearing—m/s rear	1
550216	Cup—c/s front bearing	1
550167	Cone—c/s front bearing	1
550205	Cup—c/s rear bearing	1
550154	Cone—c/s rear bearing	1
312998X	Shim Kit (after serial No. 682881)	1
73-228-1-1	Shim—c/s rear bearing cap (.003")	7
73-228-1-2	Shim—c/s rear bearing cap (.005")	2
73-228-1-3	Shim—c/s rear bearing cap (.010")	1
73-228-1-4	Shim—c/s rear bearing cap (.030")	1
312999X	Shim Kit (used prior to serial No. 682881)	1
60-228-13-1	Shim—c/s rear bearing cap (.003")	7
60-228-13-2	Shim—c/s rear bearing cap (.005")	2
60-228-13-3	Shim—c/s rear bearing cap (.010")	1
60-228-13-4	Shim—c/s rear bearing cap (.030")	1
	Miscellaneous Parts (Included in Basic Overhaul Kit)	
61-463-4	Oil Seal—shift rod	2
60-463-8	Oil Seal—front bearing cap	1
60-463-5	Oil Seal—m/s rear bearing cap (less brake)	1
60-463-6	Oil Seal—m/s rear bearing cap (with brake)	1
325-SP	Pin—m/s 3rd speed gear sleeve	1
82-381-1	Snap Ring—c/s drive gear	1
60-381-8	Snap Ring—c/s 3rd gear	1
60-381-9	Snap Ring—drive gear bearing	1
60-381-7	Snap Ring—m/s clutch gear	1
330522	Thrust Washer—m/s 1st gear	1
312477-2X	SMALL PARTS KIT	
60-381-9	Snap Ring—drive gear bearing	1
325-SP	Pin—m/s 3rd speed gear sleeve	1
60-381-7	Snap Ring—m/s clutch gear	1
330522	Thrust Washer—m/s 1st gear	1
82-381-1	Snap Ring—c/s drive gear	1
60-381-8	Snap Ring—c/s 3rd gear	1
500010-8	Woodruff Key #29	6
50-80-5	Ball—poppet	2
52-72-1	Spring—poppet ball	2
18-12-1	Interlock	1

MODEL 7041
With Top Mounted P.T.O.
Repair and Overhaul Kits

Spicer®
4 SPEED AUXILIARY

T210-61

Part No.	Part Description	Qty. Reqd.
331578X	GASKET KIT—with top mounted P.T.O.	
70-223-24	Gasket—outputs shaft bearing cap	2
70-223-26	Gasket—output shaft front and rear bearing cap	2
70-223-23	Gasket—reverse shaft bearing cap	2
70-155-4	Gasket—p.t.o. case	1
46-324-1	Gasket—p.t.o. aperture cover	2
60-223-25	Gasket—front bearing cap (single-piece)	1
60-223-26	Gasket—m/s rear bearing cap	1
60-223-29	Gasket—front bearing cap	1
60-223-30	Gasket—c/s front bearing cap	1
312477-25X	(SMALL PARTS KIT)—with top mounted P.T.O.	
50-80-1	Ball—shift rod poppet	1
22-72-5	Spring—shift rod poppet	1
425-SP	Pin—output drive gear sleeve	1
61-463-4	Oil Seal—output gear shift rod	2
70-381-5	Snap Ring—reverse shaft	2
74-381-1	Snap Ring—rear bearing	1
22-381-15	Snap Ring—output drive gear (for 311028X)	1
98-381-3	Snap Ring—output drive gear (for 313053X)	1
60-381-9	Snap Ring—drive gear bearing	1
325-SP	Pin—m/s 3rd speed gear sleeve	1
60-381-7	Snap Ring—m/s clutch gear	1
330522	Thrust Washer—m/s 1st gear	1
82-381-1	Snap Ring—c/s drive gear	1
60-381-8	Snap Ring—c/s 3rd gear	1
500010-8	Woodruff Key #29	6
50-80-5	Ball—shift rod poppet	2
52-72-1	Spring—shift rod poppet ball	2
18-12-1	Interlock	1

IDENTIFICATION

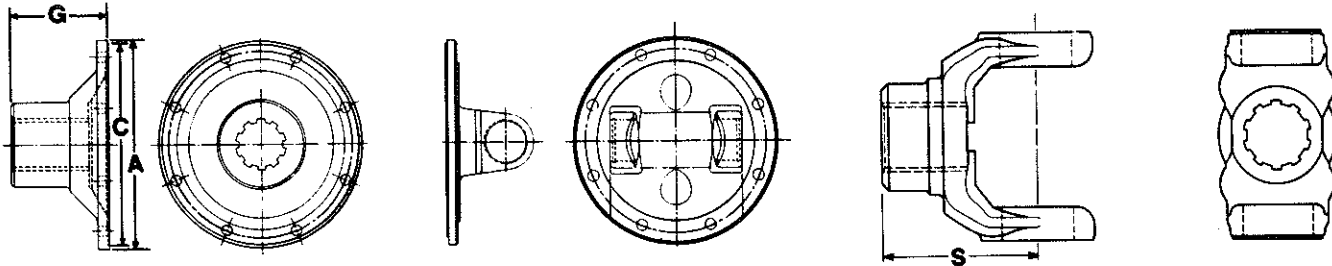
The name Plate (NP-96) affixed to the LEFT side of the Transmission is stamped with information:

SERIAL

B/M No. MODEL

In requesting more information on these transmissions, furnish the B/M No. and the Serial Number.

RATIO	
FIRST—Underdrive	2.31
SECOND—Underdrive	1.21
THIRD—Direct	1.00
FOURTH—Overdrive83



COMPANION FLANGE

FLANGE YOKE

END YOKE

Companion Flanges and Flange Yokes

Joint Series	A Flange Diameter	Companion Flange Sub- Assembly	Consists of		G End of Hub to Flange Face Length	C Pilot Diameter F-Female M-Male	Used with	
			Companion Flange	Flinger			Flange Yoke	Flange Yoke 1650 Series
Front of 7041			1.961" Six Spline					
1480	5 ⁷ / ₈ "	4-1-3621X	4-1-601	330287	3 ⁵ / ₈ "	F-3 ³ / ₄ "	3-2-479	—
1550	5 ⁷ / ₈ "	4-1-3621X	4-1-601	330287	3 ⁵ / ₈ "	F-3 ³ / ₄ "	4-2-669	—
1600	5 ⁷ / ₈ "	5-1-3901X	5-1-461	330287	3 ⁵ / ₈ "	F-6 ⁵ / ₈ "	5-2-279	—
1600	6 ⁷ / ₈ "	5-1-4271X	5-1-3791	330287	3 ⁵ / ₈ "	F-6 ⁵ / ₈ "	—	—
1700	8"	6-1-3011X	6-1-511	330287	3 ¹¹ / ₁₆ "	F-7 ³ / ₄ "	6-2-749	5-2-809
Rear of 7041			2.224" Six Spline					
Without Brakes								
1600	6 ⁷ / ₈ "	5-1-4711X	5-1-2751	330499	4"	F-5 ¹ / ₄ "	—	—
1600	6 ⁷ / ₈ "	5-1-4641X	5-1-2541	330499	3 ⁷ / ₈ "	F-6 ⁵ / ₈ "	5-2-279	—
1700	8"	6-1-4091X	6-1-1731	330499	3 ³ / ₄ "	F-7 ³ / ₄ "	6-2-749	5-2-809
1700	8"	—	6-1-581	—	4 ¹⁵ / ₃₂ "	F-7 ³ / ₄ "	—	—
1800	8"	6 ¹ / ₂ -1-1471X	6 ¹ / ₂ -1-481	330499	3 ³ / ₄ "	F-7 ³ / ₄ "	6-2-779	—
With Brakes								
1700	8"	6-1-4081X	6-1-1511	330499	4 ⁷ / ₈ "	M-8"	6-2-759	5-2-779
1700	8"	6-1-3001X	—	—	5 ³ / ₈ "	M-6 ⁷ / ₁₆ "	6-2-789	5-2-789
1700	8"	—	6-1-2991	—	5 ³ / ₈ "	M-6 ⁷ / ₁₆ "	6-2-789	—

End Yokes

Joint Series	End Yoke Sub-Assembly	Consists of		S End of Hub to Center Line Length	Joint Angle
		Yoke	Flinger		
Front of 7041		1.961" Six Spline			
1600	5-4-2031X	5-4-1431	330287	5"	22
1700	6-4-3581X	6-4-3191	330287	5 ³ / ₃₂ "	22
Rear of 7041		2.224" Six Spline			
1600-1610	5-4-4941X	5-4-4741	330499	5 ²³ / ₃₂ "	25
1650	5-4-3111X	5-4-2761	330499	5 ⁵ / ₁₆ "	22
1700	6-4-3461X	6-4-3031	330499	5 ⁵ / ₁₆ "	22

MODEL 7041

Spicer®

T210-61

Tabulated Bills of Material

4 SPEED AUXILIARY

Bill of Material Number	Used By	Flange or Yoke		Case Assembly See Page 7	Rear Bearing Cap	Speedometer		Trunnion	Top Mounted P.T.O.
		Front See Page 10	Rear See Page 10			Drive Gear	Driven Gear		
300286—Model 7041									
300286- 1	—	—	—	60-15-155-1X	311414X	—	—	—	—
<input type="checkbox"/> 300286- 2	Watson	—	—	60-15-155-1X	311414X	—	—	—	—
300286- 3	Chrysler	5-1-4271X	6-1-3001X	60-15-156-2X	311891X	70-452-12	—	60-410-4	—
<input type="checkbox"/> 300286- 4	Kenworth	5-1-3901X	5-1-4641X	60-15-155-4X	311414X	—	—	—	—
<input type="checkbox"/> 300286- 5	IHC	—	—	60-15-155-1X	311414X	70-452-3	—	—	—
300286- 6	Crane Carrier	—	—	60-15-155-1X	311414X	70-452-6	70-453-4	60-410-4	—
<input type="checkbox"/> 300286- 7	Ford	—	—	60-15-155-4X	311891X	—	—	—	—
<input type="checkbox"/> 300286- 8	Dia. T	5-1-3901X	5-1-4711X	60-15-155-1X	311414X	70-452-10	—	—	—
<input type="checkbox"/> 300286- 9	Ford	—	—	60-15-155-6X	311891X	—	—	—	—
<input type="checkbox"/> 300286-10	Bendix Brake	—	—	60-15-155-4X	311891X	—	—	—	—
<input type="checkbox"/> 300286-11	Kenworth	5-4-2031X	6-4-3461X	60-15-155-4X	311414X	—	—	—	—
<input type="checkbox"/> 300286-12	Dia. T	—	—	60-15-155-1X	311414X	70-452-10	—	—	—
<input type="checkbox"/> 300286-13	FWD	5-1-3901X	—	60-15-155-1X	311414X	70-452-3	70-453-5	—	—
300286-14	GMC	—	—	60-15-155-2X	311414X	—	—	—	—
<input type="checkbox"/> 300286-15	Chrysler	—	—	60-15-155-1X	311414X	—	—	—	—
<input type="checkbox"/> 300286-16	Challenge Cook	—	6-1-581	60-15-155-1X	311414X	70-452-5	70-453-2	—	—
<input type="checkbox"/> 300286-18	Freightliner	5-4-2031X	5-4-3111X	60-15-155-1X	311414X	70-452-10	—	—	—
300286-19	Hind Motors	6-1-3011X	6-1-4091X	60-15-155-1X	311414X	—	—	—	—
<input type="checkbox"/> 300286-20	Mack	—	—	60-15-155-1X	311414X	70-452-8	—	—	—
<input type="checkbox"/> 300286-21	Peterbilt	6-4-3581X	6-4-3461X	60-15-155-1X	311414X	70-452-8	70-453-1	—	—
300286-22	GMC	—	—	60-15-155-2X	311414X	70-452-6	70-453-4	—	—
300286-23	Freightliner	—	—	60-15-155-1X	311414X	—	—	—	—
300286-24	White	—	—	60-15-155-1X	311414X	70-452-14	—	—	—
<input type="checkbox"/> 300286-25	Kenworth	6-4-3581X	6-4-3461X	60-15-155-1X	311414X	70-452-5	70-453-2	—	—
<input type="checkbox"/> 300286-26	Jack Tidd	6-1-3011X	6-1-4081X	60-15-155-1X	311414X	70-452-10	70-453-8	—	—
<input type="checkbox"/> 300286-27	Jack Tidd	5-1-3901X	6-1-4081X	60-15-155-1X	311414X	70-452-10	70-453-8	—	—
<input type="checkbox"/> 300286-28	Jack Tidd	5-1-3901X	6-1-4081X	60-15-155-1X	311414X	70-452-10	70-453-9	—	—
<input type="checkbox"/> 300286-29	Jack Tidd	5-1-3901X	6-1-4081X	60-15-155-1X	311414X	70-452-5	70-453-2	—	—
300340—Model 7041									
<input type="checkbox"/> 300340- 1	Dia. Rio	—	—	60-15-155-1X	311414X	70-452-14	—	—	—
300441—Model 7041									
<input type="checkbox"/> 300441- 1	Chevrolet	—	—	60-15-155-1X	313013X	70-452-6	70-453-4	—	—
300514—Model 7041									
<input type="checkbox"/> 300514- 1	Dia. Rio	—	—	60-15-155-1X	311414X	70-452-14	—	—	—
<i>(Uses Shifter Housing Assembly 312071X.)</i>									
300528—Model 7041									
☆ 300528- 1	GMC	—	—	60-15-155-2X	311414X	70-452-6	70-453-4	—	311194-2X *
☆ 300528- 2	GMC	—	—	60-15-155-2X	311414X	70-452-6	70-453-4	—	311028-2X **
<input type="checkbox"/> 300528- 3	Crane Carrier	5-4-2031X	6-4-3461X	60-15-155-1X	311414X	70-452-6	70-453-4	60-410-4	—
<input type="checkbox"/> 300528- 4	Jack Tidd	—	—	60-15-155-1X	311414X	70-452-10	70-453-9	—	—
300528- 5	Mack	—	—	60-15-155-1X	311414X	70-452-15	—	—	—
☆ 300528- 6	IHC	—	—	60-15-155-1X	311414X	70-452-3	—	—	—
<i>(300528-6 Uses 60-203-7 Sleeve to block out Overdrive.)</i>									
<input type="checkbox"/> 300528- 7	Mack	5-1-3901X	6-1-3001X	60-15-155-4X	311891X	70-452-15	—	60-410-4	—
<input type="checkbox"/> 300528- 8	Jack Tidd	5-1-3901X	5-1-4641X	60-15-155-1X	311414X	70-452-5	70-453-7	—	—
<input type="checkbox"/> 300528- 9	IHC	—	—	60-15-155-1X	311414X	70-452-13	—	—	—
300528-10	FWD	—	—	60-15-155-1X	311414X	70-452-5	70-453-7	—	—
<input type="checkbox"/> 300528-11	Jack Tidd	5-1-3901X	6-1-4091X	60-15-155-1X	311414X	70-452-10	70-453-8	60-410-4	—
300528-12	IHC	—	—	60-15-155-4X	—	—	—	—	—
300528-13	Ford	—	—	60-15-157-1X	—	—	—	—	—
<i>(300528-13 Uses Drive Gear 60-35-70 [10 Spline 33T].)</i>									

(continued on page 12)

☆ These Bills of Material have been superseded as shown below.

B/M No.	Use
300528-1	300528-22
300528-2	300528-22
300528-6	300528-16

These units are not presently in production. Contact your Transmission Specialist at Drivetrain Service Division for availability.

* Use Top Mounted P.T.O. Catalog T210-60 (Forced and Non-forced Lube)

** Use Top Mounted P.T.O. Catalog T210-59 (Internal Lube)

These units are not presently in production. Contact your Transmission Specialist at Drivetrain Service Division for availability.

Bill of Material Number	Used By	Flange or Yoke		Case Assembly See Page 7	Rear Bearing Cap	Speedometer		Trunnion	Top Mounted P.T.O.
		Front See Page 10	Rear See Page 10			Drive Gear	Driven Gear		
<input type="checkbox"/> 300528-14	Chrysler	—	—	60-15-155-1X	—	—	—	—	—
<input type="checkbox"/> 300528-15	Kenworth	—	—	60-15-155-4X	311414X	—	—	—	—
<input type="checkbox"/> 300528-16	IHC	—	—	60-15-155-4X	—	—	—	—	—
<i>(300528-16 Uses 60-203-7 Sleeve to block out Overdrive.)</i>									
<input type="checkbox"/> 300528-17	Jay Madson	4-1-3621X	5-1-4641X	60-15-155-4X	311414X	—	—	—	—
<input type="checkbox"/> 300528-18	Jack Tidd	6-1-3011X	6-1-4091X	60-15-155-1X	311414X	70-452-5	70-453-2	60-410-4	—
<input type="checkbox"/> 300528-19	Mack	6-4-3581X	6-4-3461X	60-15-155-1X	311414X	70-452-15	—	—	—
<input type="checkbox"/> 300528-20	Sicard	6-4-3581X	6-4-3461X	60-15-155-1X	311414X	70-452-10	70-453-8	60-410-4	—
<input type="checkbox"/> 300528-21	Sicard	5-4-2031X	6-4-3461X	60-15-155-1X	311414X	70-452-10	70-453-8	60-410-4	—
<input type="checkbox"/> 300528-22	GMC	—	—	60-15-155-2X	311414X	70-452-6	70-453-4	—	313053-6X **
<input type="checkbox"/> 300528-23	Harnischfeger	5-4-2031X	5-4-4941X	60-15-155-1X	311414X	70-452-8	70-453-1	60-410-4	—
<input type="checkbox"/> 300528-24	Sonnerdale	6-1-3011X	6½-1-1471X	60-15-155-1X	311414X	70-452-3	—	60-410-4	313053-3X **
<input type="checkbox"/> 300528-25	Jack Tidd	5-1-3901X	6-1-4091X	60-15-155-1X	311414X	70-452-10	70-453-8	60-410-4	313053-4X **
<input type="checkbox"/> 300528-26	Warner Swasey	5-4-2031X	5-4-4941X	60-15-155-1X	311414X	70-452-5	70-453-2	—	—
<input type="checkbox"/> 300528-27	Warner Swasey	5-4-2031X	6-4-3461X	60-15-155-1X	311414X	70-452-8	70-453-1	60-410-4	—
<input type="checkbox"/> 300528-28	—	—	—	60-15-155-1X	311414X	70-452-5	70-453-2	—	—
<input type="checkbox"/> 300528-29	Amer. Hoist	—	6½-1-1471X	60-15-155-1X	311414X	70-452-5	70-453-2	60-410-4	—
<input type="checkbox"/> 300528-30	Jack Tidd	5-1-3901X	5-1-4641X	60-15-155-1X	311414X	70-452-5	70-453-7	60-410-4	—
<input type="checkbox"/> 300528-31	—	—	—	60-15-155-1X	311414X	70-452-6	70-453-4	—	313053-2X **
☆ 300528-32	White	—	—	60-15-155-1X	311414X	70-452-4	—	—	313053-1X **
☆ 300528-33	GMC	—	—	60-15-155-2X	311414X	70-452-6	70-453-4	—	313053-2X **
<input type="checkbox"/> 300528-34	AG Chem	5-4-2031X	6-1-2991	60-15-155-1X	313013X	70-452-5	70-453-2	60-410-4	—
<i>(300528-34 Uses 60-203-7 Sleeve to block out Overdrive.)</i>									
<input type="checkbox"/> 300528-35	Geo. E. Failing	4-1-3621X	5-1-4641X	60-15-155-4X	311414X	—	—	60-410-4	—
<input type="checkbox"/> 300528-36	GMC	—	—	60-15-155-2X	311414X	70-452-6	70-453-4	—	313219-2X **
<input type="checkbox"/> 300528-37	White	—	—	60-15-155-1X	311414X	70-452-4	—	—	313219-1X **
<input type="checkbox"/> 300528-38	—	6-1-3011X	6-1-4091X	60-15-155-1X	311414X	—	—	60-410-4	313219-1X **
<input type="checkbox"/> 300528-39	—	6-4-3581X	6-4-3461X	60-15-155-1X	311414X	—	—	60-410-4	313219-3X **
<input type="checkbox"/> 300528-40	Crawford	5-4-2031X	5-4-4941X	60-15-155-1X	311414X	70-452-6	70-453-4	60-410-4	313219-2X **
<input type="checkbox"/> 300528-41	Freightliner	5-4-2031X	5-4-4941X	60-15-155-1X	311414X	70-452-5	70-453-2	60-410-4	313219-2X **
<input type="checkbox"/> 300528-42	White	—	—	60-15-155-1X	311414X	70-452-4	—	—	313219-5X **

☆ These Bills of Material have been superseded as shown below.

B/M No.	Use
300528-32	300528-37
300528-33	300528-36

These units are not presently in production. Contact your Transmission Specialist at Drivetrain Service Division for availability.

* Use Top Mounted P.T.O. Catalog T210-60 (Forced and Non-forced Lube)

** Use Top Mounted P.T.O. Catalog T210-59 (Internal Lube)



14700 Helm Court
Plymouth, MI 48170
(800) 401-9866 or (734) 456-3770
Fax: (734) 456-3739
www.ttcautomotive.com

